

**C2orf24 Polyclonal Antibody**  
**Purified Rabbit Polyclonal Antibody (Pab)**  
**Catalog # AP59386**

**Specification**

**C2orf24 Polyclonal Antibody - Product Information**

Application	WB
Primary Accession	<a href="#">Q9BV87</a>
Reactivity	Rat, Pig, Dog, Cow
Host	Rabbit
Clonality	Polyclonal
Calculated MW	45456

**C2orf24 Polyclonal Antibody - Additional Information**

**Gene ID** 27013

**Other Names**

Protein CNPPD1, Cyclin Pas1/PHO80 domain-containing protein 1, CNPPD1, C2orf24

**Format**

0.01M TBS(pH7.4) with 1% BSA, 0.09% (W/V) sodium azide and 50% Glyce

**Storage**

Store at -20 °C for one year. Avoid repeated freeze/thaw cycles. When reconstituted in sterile pH 7.4 0.01M PBS or diluent of antibody the antibody is stable for at least two weeks at 2-4 °C.

**C2orf24 Polyclonal Antibody - Protein Information**

**Name** CNPPD1

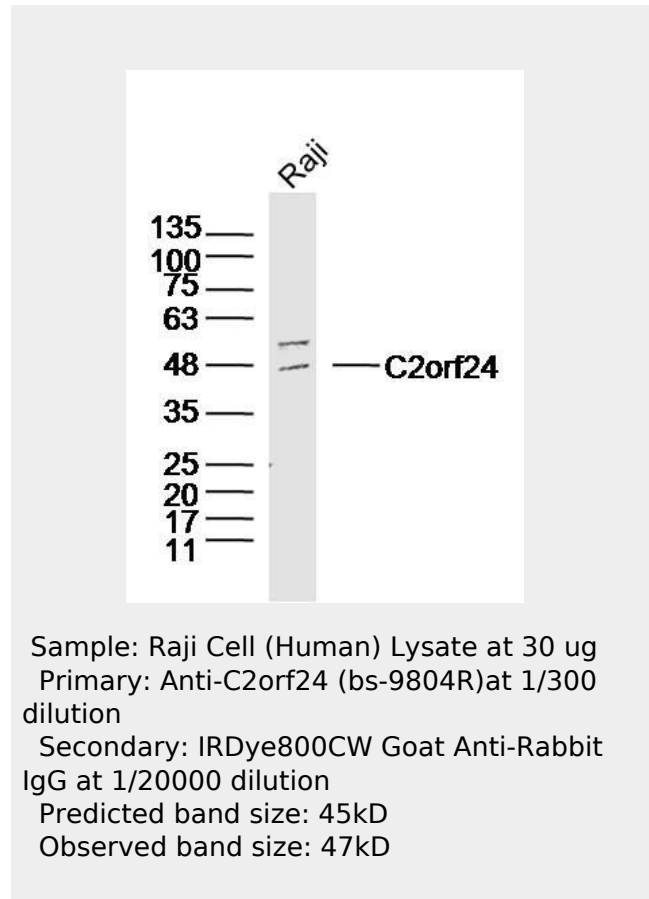
**Synonyms** C2orf24

**Cellular Location**

Membrane; Single-pass membrane protein

**C2orf24 Polyclonal Antibody - Protocols**

Provided below are standard protocols that you



may find useful for product applications.

- [Western Blot](#)
- [Blocking Peptides](#)
- [Dot Blot](#)
- [Immunohistochemistry](#)
- [Immunofluorescence](#)
- [Immunoprecipitation](#)
- [Flow Cytometry](#)
- [Cell Culture](#)