

KIAA1522 Polyclonal Antibody
Purified Rabbit Polyclonal Antibody (Pab)
Catalog # AP59040

Specification

KIAA1522 Polyclonal Antibody - Product Information

Application	WB
Primary Accession	Q9P206
Reactivity	Rat, Pig, Dog, Cow
Host	Rabbit
Clonality	Polyclonal
Calculated MW	107095

KIAA1522 Polyclonal Antibody - Additional Information

Gene ID 57648

Other Names

Uncharacterized protein KIAA1522,
KIAA1522

Format

0.01M TBS(pH7.4) with 1% BSA, 0.09% (W/V) sodium azide and 50% Glyce

Storage

Store at -20 °C for one year. Avoid repeated freeze/thaw cycles. When reconstituted in sterile pH 7.4 0.01M PBS or diluent of antibody the antibody is stable for at least two weeks at 2-4 °C.

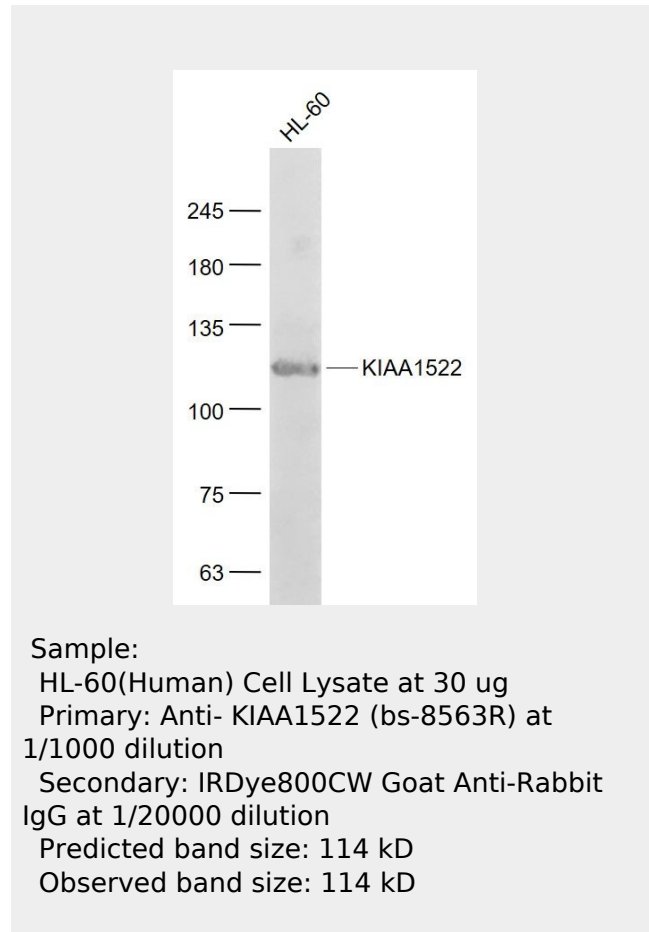
KIAA1522 Polyclonal Antibody - Protein Information

Name KIAA1522

KIAA1522 Polyclonal Antibody - Protocols

Provided below are standard protocols that you may find useful for product applications.

- [Western Blot](#)
- [Blocking Peptides](#)
- [Dot Blot](#)



- [Immunohistochemistry](#)
- [Immunofluorescence](#)
- [Immunoprecipitation](#)
- [Flow Cytometry](#)
- [Cell Culture](#)