

GM2A Antibody (N-term)
Affinity Purified Rabbit Polyclonal Antibody (Pab)
Catalog # AP5841a

Specification

GM2A Antibody (N-term) - Product Information

Application	WB,E
Primary Accession	P17900
Other Accession	Q8HXX6 , NP_000396.2
Reactivity	Human, Mouse
Predicted	Monkey
Host	Rabbit
Clonality	Polyclonal
Isotype	Rabbit IgG
Antigen Region	25-54

GM2A Antibody (N-term) - Additional Information

Gene ID 2760

Other Names

Ganglioside GM2 activator, Cerebroside sulfate activator protein, GM2-AP, Sphingolipid activator protein 3, SAP-3, Ganglioside GM2 activator isoform short, GM2A

Target/Specificity

This GM2A antibody is generated from rabbits immunized with a KLH conjugated synthetic peptide between 25-54 amino acids of human GM2A.

Dilution

WB~~1:1000

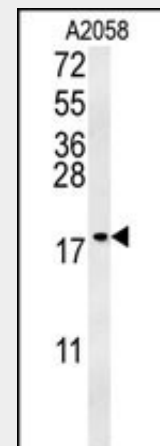
Format

Purified polyclonal antibody supplied in PBS with 0.09% (W/V) sodium azide. This antibody is purified through a protein A column, followed by peptide affinity purification.

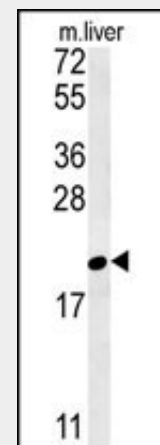
Storage

Maintain refrigerated at 2-8°C for up to 2 weeks. For long term storage store at -20°C in small aliquots to prevent freeze-thaw cycles.

Precautions



GM2A Antibody (N-term) (Cat. #AP5841a) western blot analysis in A2058 cell line lysates (35ug/lane). This demonstrates the GM2A antibody detected the GM2A protein (arrow).



GM2A Antibody (N-term) (Cat. #AP5841a) western blot analysis in mouse liver tissue lysates (35ug/lane). This demonstrates the GM2A antibody detected the GM2A protein (arrow).

GM2A Antibody (N-term) is for research use only and not for use in diagnostic or therapeutic procedures.

GM2A Antibody (N-term) - Protein Information

Name GM2A ([HGNC:4367](#))

Function

The large binding pocket can accommodate several single chain phospholipids and fatty acids, GM2A also exhibits some calcium-independent phospholipase activity (By similarity). Binds gangliosides and stimulates ganglioside GM2 degradation. It stimulates only the breakdown of ganglioside GM2 and glycolipid GA2 by beta-hexosaminidase A. It extracts single GM2 molecules from membranes and presents them in soluble form to beta-hexosaminidase A for cleavage of N-acetyl-D- galactosamine and conversion to GM3 (By similarity). Has cholesterol transfer activity (PubMed: <http://www.uniprot.org/citations/17552909> target="_blank">17552909).

Cellular Location

Lysosome.

GM2A Antibody (N-term) - Protocols

Provided below are standard protocols that you may find useful for product applications.

- [Western Blot](#)
- [Blocking Peptides](#)
- [Dot Blot](#)
- [Immunohistochemistry](#)
- [Immunofluorescence](#)
- [Immunoprecipitation](#)
- [Flow Cytometry](#)
- [Cell Culture](#)

GM2A Antibody (N-term) - Citations

- [Cigarette smoking exposure alters pebp1 DNA methylation and protein profile involved in MAPK signaling pathway in mice testis.](#)