

EBF3 Polyclonal Antibody
Purified Rabbit Polyclonal Antibody (Pab)
Catalog # AP58145**Specification****EBF3 Polyclonal Antibody - Product Information**

Application	IHC-P
Primary Accession	Q9H4W6
Reactivity	Rat, Pig, Dog, Cow
Host	Rabbit
Clonality	Polyclonal
Calculated MW	64864

EBF3 Polyclonal Antibody - Additional Information**Gene ID** 253738**Other Names**

Transcription factor COE3, Early B-cell factor 3, EBF-3, Olf-1/EBF-like 2, O/E-2, OE-2, EBF3, COE3

Format

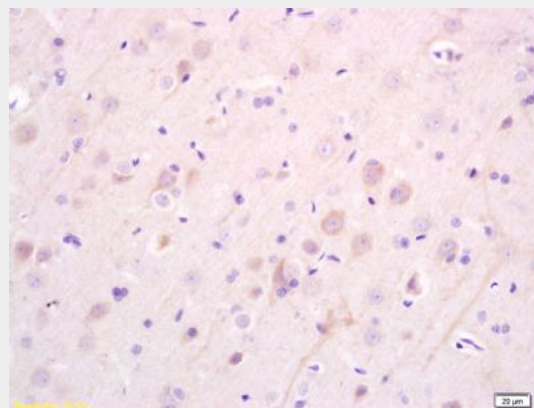
0.01M TBS(pH7.4) with 1% BSA, 0.09% (W/V) sodium azide and 50% Glyce

Storage

Store at -20 °C for one year. Avoid repeated freeze/thaw cycles. When reconstituted in sterile pH 7.4 0.01M PBS or diluent of antibody the antibody is stable for at least two weeks at 2-4 °C.

EBF3 Polyclonal Antibody - Protein Information**Name** EBF3**Synonyms** COE3**Function**

Transcriptional activator (PubMed:28017373, PubMed:28017372, PubMed:<a href="http://www.uniprot.org/ci



Tissue/cell: rat brain tissue; 4% Paraformaldehyde-fixed and paraffin-embedded;

Antigen retrieval: citrate buffer (0.01M, pH 6.0), Boiling bathing for 15min; Block endogenous peroxidase by 3% Hydrogen peroxide for 30min; Blocking buffer (normal goat serum,C-0005) at 37°C for 20 min;

Incubation: Anti-EB3 Polyclonal Antibody, Unconjugated(bs-4275R) 1:200, overnight at 4°C, followed by conjugation to the secondary antibody(SP-0023) and DAB(C-0010) staining

tations/28017370"
target="_blank">28017370).
Recognizes variations of the palindromic
sequence 5'- ATTCCCNNGGGAATT-3' (By
similarity).

Cellular Location

Nucleus.

Tissue Location

Expressed in brain..

EBF3 Polyclonal Antibody - Protocols

Provided below are standard protocols that you
may find useful for product applications.

- [Western Blot](#)
- [Blocking Peptides](#)
- [Dot Blot](#)
- [Immunohistochemistry](#)
- [Immunofluorescence](#)
- [Immunoprecipitation](#)
- [Flow Cytometry](#)
- [Cell Culture](#)