

p45 NF-E2 Polyclonal Antibody
Purified Rabbit Polyclonal Antibody (Pab)
Catalog # AP57979

Specification

p45 NF-E2 Polyclonal Antibody - Product Information

Application	IHC-P
Primary Accession	O16621
Reactivity	Rat
Host	Rabbit
Clonality	Polyclonal
Calculated MW	41473

p45 NF-E2 Polyclonal Antibody - Additional Information

Gene ID 4778

Other Names

Transcription factor NF-E2 45 kDa subunit, Leucine zipper protein NF-E2, Nuclear factor, erythroid-derived 2 45 kDa subunit, p45 NF-E2, NFE2

Format

0.01M TBS(pH7.4) with 1% BSA, 0.09% (W/V) sodium azide and 50% Glyce

Storage

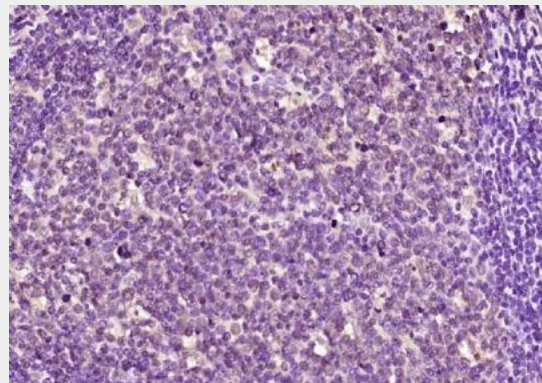
Store at -20 °C for one year. Avoid repeated freeze/thaw cycles. When reconstituted in sterile pH 7.4 0.01M PBS or diluent of antibody the antibody is stable for at least two weeks at 2-4 °C.

p45 NF-E2 Polyclonal Antibody - Protein Information

Name NFE2

Function

Component of the NF-E2 complex essential for regulating erythroid and megakaryocytic maturation and differentiation. Binds to the hypersensitive site 2 (HS2) of the beta-globin control region (LCR). This subunit (NFE2) recognizes the TCAT/C sequence of the AP-1- like core palindrome present in a number of erythroid and



Paraformaldehyde-fixed, paraffin embedded (human tonsil); Antigen retrieval by boiling in sodium citrate buffer (pH6.0) for 15min; Block endogenous peroxidase by 3% hydrogen peroxide for 20 minutes; Blocking buffer (normal goat serum) at 37°C for 30min; Antibody incubation with (p45 NF-E2) Polyclonal Antibody, Unconjugated (bs-22023R) at 1:400 overnight at 4°C, followed by operating according to SP Kit(Rabbit) (sp-0023) instructions and DAB staining.

megakaryocytic gene promoters. Requires MAFK or other small MAF proteins for binding to the NF-E2 motif. May play a role in all aspects of hemoglobin production from globin and heme synthesis to procurement of iron.

Cellular Location

Nucleus, PML body. Cytoplasm. Note=The sumoylated form locates to the nuclear bodies PML oncogenic domains (PODs) Translocated to the cytoplasm through interaction with ITCH

Tissue Location

Expressed in hematopoietic cells and also in colon and testis

p45 NF-E2 Polyclonal Antibody - Protocols

Provided below are standard protocols that you may find useful for product applications.

- [Western Blot](#)
- [Blocking Peptides](#)
- [Dot Blot](#)
- [Immunohistochemistry](#)
- [Immunofluorescence](#)
- [Immunoprecipitation](#)
- [Flow Cytometry](#)
- [Cell Culture](#)