

QSER1 Polyclonal Antibody
Purified Rabbit Polyclonal Antibody (Pab)
Catalog # AP57626

Specification

QSER1 Polyclonal Antibody - Product Information

| | |
|-------------------|------------------------|
| Application | IHC-P |
| Primary Accession | Q2KHR3 |
| Reactivity | Rat, Cow |
| Host | Rabbit |
| Clonality | Polyclonal |
| Calculated MW | 189972 |

QSER1 Polyclonal Antibody - Additional Information

Gene ID 79832

Other Names

Glutamine and serine-rich protein 1, QSER1

Format

0.01M TBS(pH7.4) with 1% BSA, 0.09% (W/V) sodium azide and 50% Glyce

Storage

Store at -20 °C for one year. Avoid repeated freeze/thaw cycles. When reconstituted in sterile pH 7.4 0.01M PBS or diluent of antibody the antibody is stable for at least two weeks at 2-4 °C.

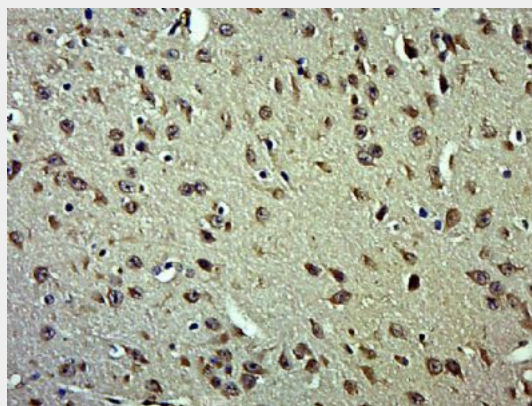
QSER1 Polyclonal Antibody - Protein Information

Name QSER1

QSER1 Polyclonal Antibody - Protocols

Provided below are standard protocols that you may find useful for product applications.

- [Western Blot](#)
- [Blocking Peptides](#)
- [Dot Blot](#)
- [Immunohistochemistry](#)
- [Immunofluorescence](#)
- [Immunoprecipitation](#)



Paraformaldehyde-fixed, paraffin embedded (Mouse brain); Antigen retrieval by boiling in sodium citrate buffer (pH6.0) for 15min; Block endogenous peroxidase by 3% hydrogen peroxide for 20 minutes; Blocking buffer (normal goat serum) at 37°C for 30min; Antibody incubation with (QSER1) Polyclonal Antibody, Unconjugated (bs-19697R) at 1:500 overnight at 4°C, followed by a conjugated secondary (sp-0023) for 20 minutes and DAB staining.

- [Flow Cytometry](#)
- [Cell Culture](#)