

**PGAP2 Antibody (C-term)**  
**Affinity Purified Rabbit Polyclonal Antibody (Pab)**  
**Catalog # AP5731B**

**Specification**

**PGAP2 Antibody (C-term) - Product Information**

Application	<b>WB, FC,E</b>
Primary Accession	<a href="#">O9UHJ9</a>
Other Accession	<a href="#">Q2ABP3</a> , <a href="#">Q3TOR0</a> , <a href="#">Q2ABP2</a> , <a href="#">NP_001138910.1</a>
Reactivity Predicted	<b>Human</b> <b>Hamster, Mouse,</b> <b>Rat</b>
Host	<b>Rabbit</b>
Clonality	<b>Polyclonal</b>
Isotype	<b>Rabbit Ig</b>
Calculated MW	<b>29400</b>
Antigen Region	<b>214-242</b>

**PGAP2 Antibody (C-term) - Additional Information**

**Gene ID** 27315

**Other Names**

Post-GPI attachment to proteins factor 2,  
FGF receptor-activating protein 1, PGAP2,  
FRAG1

**Target/Specificity**

This PGAP2 antibody is generated from rabbits immunized with a KLH conjugated synthetic peptide between 214-242 amino acids from the C-terminal region of human PGAP2.

**Dilution**

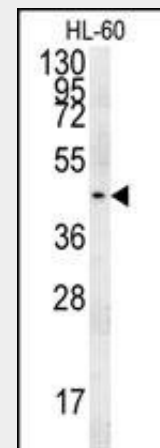
WB~~1:1000  
FC~~1:10~50

**Format**

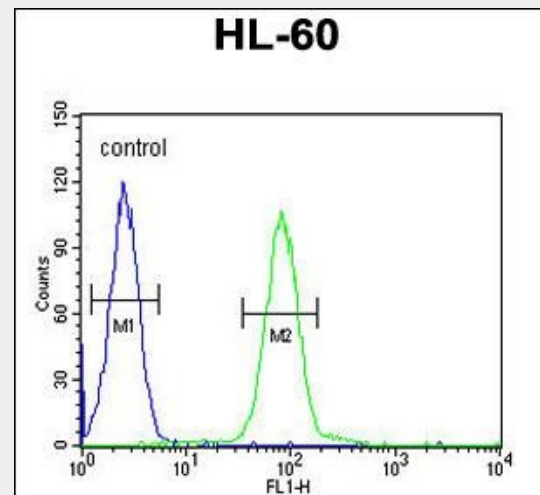
Purified polyclonal antibody supplied in PBS with 0.09% (W/V) sodium azide. This antibody is purified through a protein A column, followed by peptide affinity purification.

**Storage**

Maintain refrigerated at 2-8°C for up to 2 weeks. For long term storage store at -20°C in small aliquots to prevent freeze-thaw



PGAP2 Antibody (C-term) (Cat. #AP5731b) western blot analysis in HL-60 cell line lysates (15ug/lane). This demonstrates the PGAP2 antibody detected the PGAP2 protein (arrow).



PGAP2 Antibody (C-term) (Cat. #AP5731b) flow cytometric analysis of HL-60 cells (right histogram) compared to a negative control cell (left histogram). FITC-conjugated goat-anti-rabbit secondary antibodies were used for the analysis.

**PGAP2 Antibody (C-term) - Background**

PGAP2 is involved in the lipid remodeling steps

cycles.

#### Precautions

PGAP2 Antibody (C-term) is for research use only and not for use in diagnostic or therapeutic procedures.

#### PGAP2 Antibody (C-term) - Protein Information

**Name** PGAP2 ([HGNC:17893](#))

**Synonyms** FRAG1

#### Function

Involved in the lipid remodeling steps of GPI-anchor maturation. Required for stable expression of GPI-anchored proteins at the cell surface.

#### Cellular Location

Golgi apparatus membrane; Multi-pass membrane protein. Endoplasmic reticulum membrane; Multi-pass membrane protein

#### Tissue Location

Ubiquitously expressed, with highest levels in testis and pancreas.

of GPI-anchor maturation. Required for stable expression of GPI-anchored proteins at the cell surface (By similarity).

#### PGAP2 Antibody (C-term) - References

Tashima, Y., et al. Mol. Biol. Cell  
17(3):1410-1420(2006)

Lorenzi, M.V., et al. Genomics  
62(1):59-66(1999)

Robertson, N.G., et al. Genomics  
23(1):42-50(1994)

#### PGAP2 Antibody (C-term) - Protocols

Provided below are standard protocols that you may find useful for product applications.

- [Western Blot](#)
- [Blocking Peptides](#)
- [Dot Blot](#)
- [Immunohistochemistry](#)
- [Immunofluorescence](#)
- [Immunoprecipitation](#)
- [Flow Cytometry](#)
- [Cell Culture](#)