

LHPL3 Antibody (C-term)
Affinity Purified Rabbit Polyclonal Antibody (Pab)
Catalog # AP5721b

Specification

LHPL3 Antibody (C-term) - Product Information

Application	WB,E
Primary Accession	Q86UP9
Other Accession	Q9CTN8 , NP_945351.1
Reactivity	Human, Mouse
Host	Rabbit
Clonality	Polyclonal
Isotype	Rabbit Ig
Calculated MW	25769
Antigen Region	184-213

LHPL3 Antibody (C-term) - Additional Information

Gene ID 375612

Other Names

Lipoma HMGIC fusion partner-like 3 protein, LHFPL3, LHFPL4

Target/Specificity

This LHPL3 antibody is generated from rabbits immunized with a KLH conjugated synthetic peptide between 184-213 amino acids from the C-terminal region of human LHPL3.

Dilution

WB~~1:1000

Format

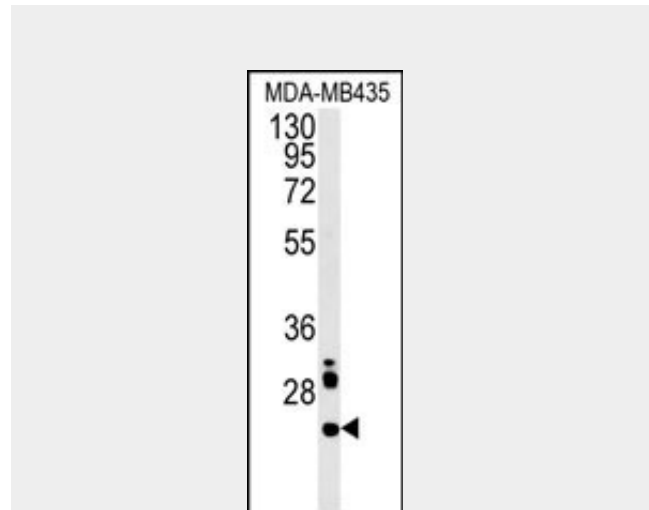
Purified polyclonal antibody supplied in PBS with 0.09% (W/V) sodium azide. This antibody is purified through a protein A column, followed by peptide affinity purification.

Storage

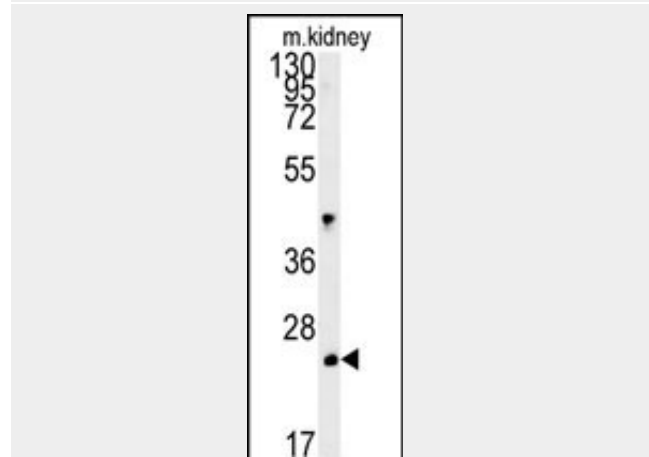
Maintain refrigerated at 2-8°C for up to 2 weeks. For long term storage store at -20°C in small aliquots to prevent freeze-thaw cycles.

Precautions

LHPL3 Antibody (C-term) is for research use only and not for use in diagnostic or



LHPL3 Antibody (C-term) (Cat. #AP5721b) western blot analysis in MDA-MB435 cell line lysates (15ug/lane). This demonstrates the LHPL3 antibody detected the LHPL3 protein (arrow).



LHPL3 Antibody (C-term) (Cat. #AP5721b) western blot analysis in mouse kidney tissue lysates (15ug/lane). This demonstrates the LHPL3 antibody detected the LHPL3 protein (arrow).

LHPL3 Antibody (C-term) - Background

LHFPL3 is a member of the lipoma HMGIC fusion partner (LHFP) gene family, which is a subset of the

therapeutic procedures.

LHPL3 Antibody (C-term) - Protein Information

Name LHFP3 ([HGNC:6589](#))

Cellular Location

Membrane; Multi-pass membrane protein

superfamily of tetraspan transmembrane protein encoding genes. Mutations in one LHFP-like gene result in deafness in humans and mice, and a second LHFP-like gene is fused to a high-mobility group gene in a translocation-associated lipoma. A partial gene fragment named LHFP4 corresponds to a portion of the first exon of this gene.

LHPL3 Antibody (C-term) - Protocols

Provided below are standard protocols that you may find useful for product applications.

- [Western Blot](#)
- [Blocking Peptides](#)
- [Dot Blot](#)
- [Immunohistochemistry](#)
- [Immunofluorescence](#)
- [Immunoprecipitation](#)
- [Flow Cytometry](#)
- [Cell Culture](#)

LHPL3 Antibody (C-term) - References

Maestrini, E., et al. Mol. Psychiatry (2009) In press :
Longo-Guess, C.M., et al. Proc. Natl. Acad. Sci. U.S.A. 102(22):7894-7899(2005)
Petit, M.M., et al. Genomics 57(3):438-441(1999)