

MANEA Polyclonal Antibody
Purified Rabbit Polyclonal Antibody (Pab)
Catalog # AP57201

Specification

MANEA Polyclonal Antibody - Product Information

Application	IHC-P
Primary Accession	Q5SRI9
Reactivity	Rat, Pig, Cat, Cow
Host	Rabbit
Clonality	Polyclonal
Calculated MW	53671

MANEA Polyclonal Antibody - Additional Information

Gene ID 79694

Other Names

Glycoprotein endo-alpha-1, 2-mannosidase, Endo-alpha mannosidase, Endomannosidase, hEndo, 3.2.1.130, Mandaselin, MANEA

Format

0.01M TBS(pH7.4) with 1% BSA, 0.09% (W/V) sodium azide and 50% Glyce

Storage

Store at -20 °C for one year. Avoid repeated freeze/thaw cycles. When reconstituted in sterile pH 7.4 0.01M PBS or diluent of antibody the antibody is stable for at least two weeks at 2-4 °C.

MANEA Polyclonal Antibody - Protein Information

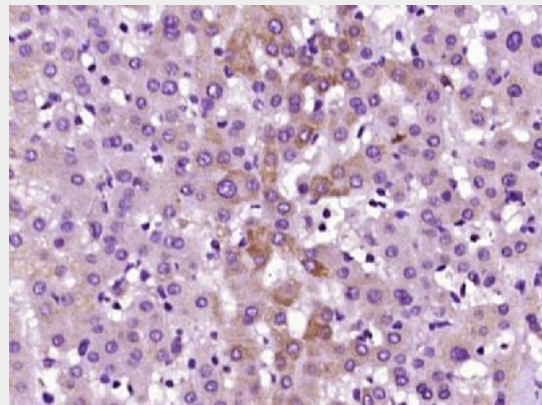
Name MANEA

Cellular Location

Golgi apparatus membrane; Single-pass type II membrane protein

Tissue Location

Highly expressed in the liver and kidney. Expressed at lower levels in muscle, pancreas, heart, placenta, lung and brain



Paraformaldehyde-fixed, paraffin embedded (human liver tissue); Antigen retrieval by boiling in sodium citrate buffer (pH6.0) for 15min; Block endogenous peroxidase by 3% hydrogen peroxide for 20 minutes; Blocking buffer (normal goat serum) at 37°C for 30min; Antibody incubation with (MANEA) Polyclonal Antibody, Unconjugated (bs-18652R) at 1:400 overnight at 4°C, followed by operating according to SP Kit(Rabbit) (sp-0023) instructions and DAB staining.

MANEA Polyclonal Antibody - Protocols

Provided below are standard protocols that you may find useful for product applications.

- [Western Blot](#)
- [Blocking Peptides](#)
- [Dot Blot](#)
- [Immunohistochemistry](#)
- [Immunofluorescence](#)
- [Immunoprecipitation](#)
- [Flow Cytometry](#)
- [Cell Culture](#)