

TET3 Polyclonal Antibody
Purified Rabbit Polyclonal Antibody (Pab)
Catalog # AP56759

Specification

TET3 Polyclonal Antibody - Product Information

Application	IF, IHC-P
Primary Accession	043151
Reactivity	Rat, Pig, Dog, Cow
Host	Rabbit
Clonality	Polyclonal
Calculated MW	193705

TET3 Polyclonal Antibody - Additional Information

Gene ID 200424

Other Names

Methylcytosine dioxygenase TET3, 1.14.11.n2, TET3 (http://www.genenames.org/cgi-bin/gene_symbol_report?hgnc_id=28313), [HGNC:28313](#)), KIAA0401

Format

0.01M TBS(pH7.4) with 1% BSA, 0.09% (W/V) sodium azide and 50% Glycerol

Storage

Store at -20 °C for one year. Avoid repeated freeze/thaw cycles. When reconstituted in sterile pH 7.4 0.01M PBS or diluent of antibody the antibody is stable for at least two weeks at 2-4 °C.

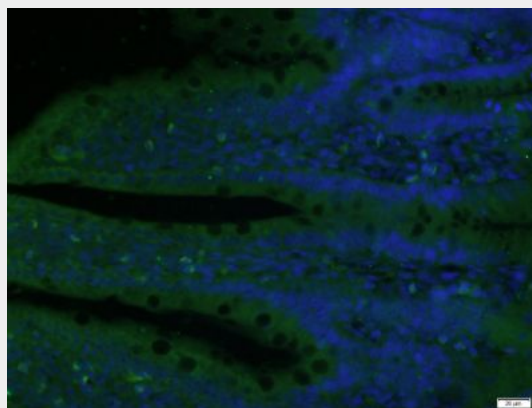
TET3 Polyclonal Antibody - Protein Information

Name TET3 ([HGNC:28313](#))

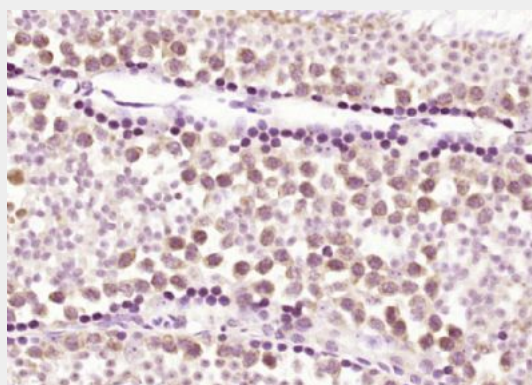
Synonyms KIAA0401

Function

Dioxygenase that catalyzes the conversion of the modified genomic base 5-methylcytosine (5mC) into 5-hydroxymethylcytosine (5hmC) and plays a key role in epigenetic chromatin



Paraformaldehyde-fixed, paraffin embedded (Rat colon); Antigen retrieval by boiling in sodium citrate buffer (pH6.0) for 15min; Block endogenous peroxidase by 3% hydrogen peroxide for 20 minutes; Blocking buffer (normal goat serum) at 37°C for 30min; Antibody incubation with (TET3) Polyclonal Antibody, Unconjugated (bs-17613R) at 1:400 overnight at 4°C, followed by a conjugated Goat Anti-Rabbit IgG antibody (bs-0295G-FITC) for 90 minutes, and DAPI for nuclei staining.



Paraformaldehyde-fixed, paraffin embedded (mouse testis); Antigen retrieval by boiling in sodium citrate buffer (pH6.0) for 15min; Block endogenous peroxidase by 3% hydrogen peroxide for 20 minutes; Blocking buffer (normal goat serum) at 37°C for 30min; Antibody incubation with (TET3) Polyclonal Antibody, Unconjugated

reprogramming in the zygote following fertilization (PubMed:31928709). Also mediates subsequent conversion of 5hmC into 5-formylcytosine (5fC), and conversion of 5fC to 5-carboxylcytosine (5caC). Conversion of 5mC into 5hmC, 5fC and 5caC probably constitutes the first step in cytosine demethylation (By similarity). Selectively binds to the promoter region of target genes and contributes to regulate the expression of numerous developmental genes (PubMed:23217707). In zygotes, DNA demethylation occurs selectively in the paternal pronucleus before the first cell division, while the adjacent maternal pronucleus and certain paternally-imprinted loci are protected from this process. Participates in DNA demethylation in the paternal pronucleus by mediating conversion of 5mC into 5hmC, 5fC and 5caC. Does not mediate DNA demethylation of maternal pronucleus because of the presence of DPPA3/PGC7 on maternal chromatin that prevents TET3-binding to chromatin (By similarity). In addition to its role in DNA demethylation, also involved in the recruitment of the O-GlcNAc transferase OGT to CpG-rich transcription start sites of active genes, thereby promoting histone H2B GlcNAcylation by OGT (PubMed:23353889). Binds preferentially to DNA containing cytidine-phosphate-guanosine (CpG) dinucleotides over CpH (H=A, T, and C), hemimethylated-CpG and hemimethylated-hydroxymethyl- CpG (PubMed:29276034).

Cellular Location

Nucleus

{ECO:0000250|UniProtKB:Q8BG87}.

Cytoplasm

{ECO:0000250|UniProtKB:Q8BG87}.

Chromosome

{ECO:0000250|UniProtKB:Q8BG87}.

Note=At the zygotic stage, localizes in the male pronucleus, while it localizes to the cytoplasm at other preimplantation stages.

Binds to the promoter of target genes, close

(bs-17613R) at 1:200 overnight at 4°C, followed by operating according to SP Kit(Rabbit) (sp-0023) instructions and DAB staining.

to the transcription start site.
{ECO:0000250|UniProtKB:Q8BG87}

Tissue Location

Expressed in colon, muscle, adrenal gland
and peripheral blood lymphocytes.

TET3 Polyclonal Antibody - Protocols

Provided below are standard protocols that you
may find useful for product applications.

- [Western Blot](#)
- [Blocking Peptides](#)
- [Dot Blot](#)
- [Immunohistochemistry](#)
- [Immunofluorescence](#)
- [Immunoprecipitation](#)
- [Flow Cytometry](#)
- [Cell Culture](#)