

KR102 Polyclonal Antibody
Purified Rabbit Polyclonal Antibody (Pab)
Catalog # AP56412

Specification

KR102 Polyclonal Antibody - Product Information

Application	WB
Primary Accession	P60368
Host	Rabbit
Clonality	Polyclonal
Calculated MW	25616

KR102 Polyclonal Antibody - Additional Information

Gene ID 386679

Other Names

Keratin-associated protein 10-2, High sulfur keratin-associated protein 10.2, Keratin-associated protein 10.2, Keratin-associated protein 18-2, Keratin-associated protein 18.2, KRTAP10-2, KAP10.2, KAP18-2, KRTAP10.2, KRTAP18-2, KRTAP18.2

Format

0.01M TBS(pH7.4) with 1% BSA, 0.09% (W/V) sodium azide and 50% Glyce

Storage

Store at -20 °C for one year. Avoid repeated freeze/thaw cycles. When reconstituted in sterile pH 7.4 0.01M PBS or diluent of antibody the antibody is stable for at least two weeks at 2-4 °C.

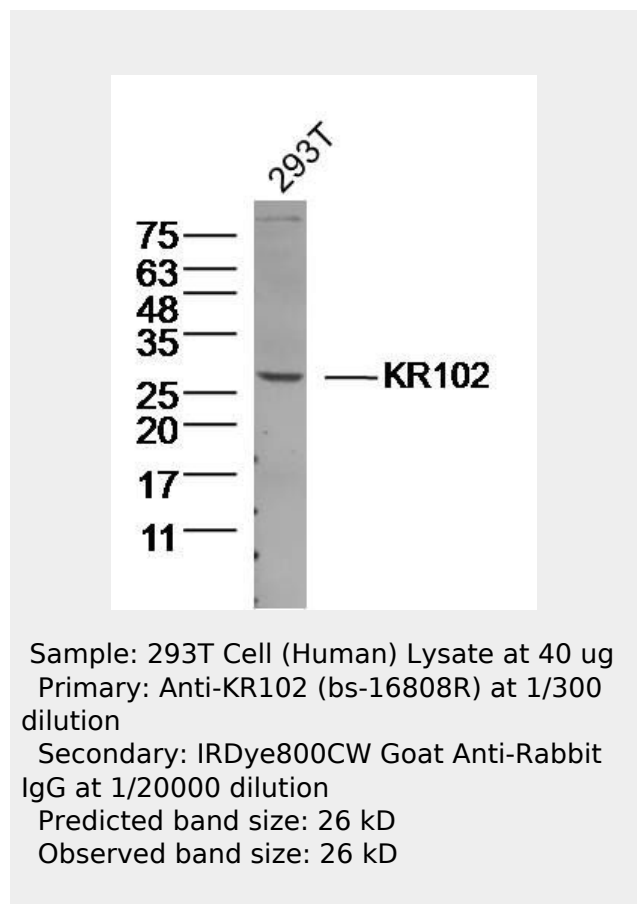
KR102 Polyclonal Antibody - Protein Information

Name KRTAP10-2

Synonyms KAP10.2, KAP18-2, KRTAP10.2, KRTAP18-2,

Function

In the hair cortex, hair keratin intermediate filaments are embedded in an interfilamentous matrix, consisting of hair keratin-associated proteins (KRTAP), which



are essential for the formation of a rigid and resistant hair shaft through their extensive disulfide bond cross-linking with abundant cysteine residues of hair keratins. The matrix proteins include the high-sulfur and high-glycine-tyrosine keratins.

Tissue Location

Restricted to a narrow region of the hair fiber cuticle, lying approximately 20 cell layers above the apex of the dermal papilla of the hair root; not detected in any other tissues

KR102 Polyclonal Antibody - Protocols

Provided below are standard protocols that you may find useful for product applications.

- [Western Blot](#)
- [Blocking Peptides](#)
- [Dot Blot](#)
- [Immunohistochemistry](#)
- [Immunofluorescence](#)
- [Immunoprecipitation](#)
- [Flow Cytometry](#)
- [Cell Culture](#)