

FMNL3 Polyclonal Antibody
Purified Rabbit Polyclonal Antibody (Pab)
Catalog # AP56152

Specification

FMNL3 Polyclonal Antibody - Product Information

Application	IHC-P, FC
Primary Accession	Q8IVF7
Reactivity	Rat, Dog, Cow
Host	Rabbit
Clonality	Polyclonal
Calculated MW	117213

FMNL3 Polyclonal Antibody - Additional Information

Gene ID 91010

Other Names

Formin-like protein 3, Formin homology 2 domain-containing protein 3, WW domain-binding protein 3, WBP-3, FMNL3, FHOD3, FRL2, KIAA2014, WBP3

Format

0.01M TBS(pH7.4) with 1% BSA, 0.09% (W/V) sodium azide and 50% Glycerol

Storage

Store at -20 °C for one year. Avoid repeated freeze/thaw cycles. When reconstituted in sterile pH 7.4 0.01M PBS or diluent of antibody the antibody is stable for at least two weeks at 2-4 °C.

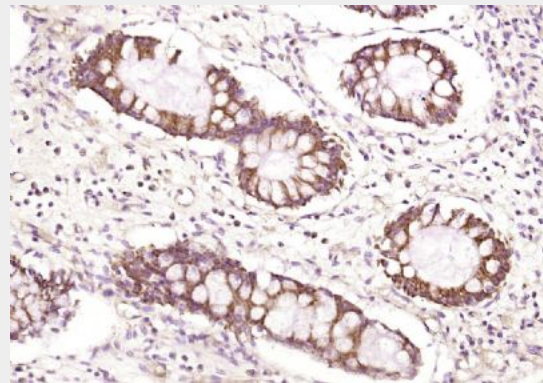
FMNL3 Polyclonal Antibody - Protein Information

Name FMNL3

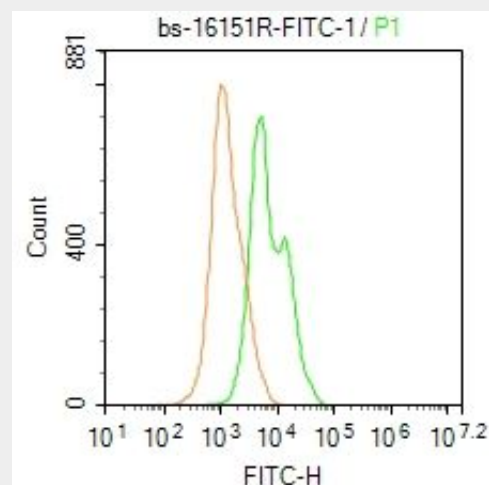
Synonyms FHOD3, FRL2, KIAA2014, WBP3

Function

Plays a role in the regulation of cell morphology and cytoskeletal organization. Required in the control of cell shape and migration. Required for developmental angiogenesis (By similarity). In this process, required for microtubule reorganization and for efficient endothelial cell elongation. In



Paraformaldehyde-fixed, paraffin embedded (human colon carcinoma); Antigen retrieval by boiling in sodium citrate buffer (pH6.0) for 15min; Block endogenous peroxidase by 3% hydrogen peroxide for 20 minutes; Blocking buffer (normal goat serum) at 37°C for 30min; Antibody incubation with (FMNL3) Polyclonal Antibody, Unconjugated (bs-16151R) at 1:200 overnight at 4°C, followed by operating according to SP Kit(Rabbit) (sp-0023) instructions and DAB staining.



Blank control: Molt4.
Primary Antibody (green line): Rabbit Anti-FMNL3/FITC Conjugated antibody (bs-16151R-FITC)
Dilution: 1 µg /10⁶ cells;

quiescent endothelial cells, triggers rearrangement of the actin cytoskeleton, but does not alter microtubule alignment.

Cellular Location

Cytoplasm. Cell membrane; Lipid-anchor
Note=Enriched in lamellipodia

Tissue Location

Expressed in endothelial cells.

Isotype Control Antibody (orange line):
Rabbit IgG-FITC .
Protocol

The cells were fixed with 4% PFA (10min at room temperature) and then permeabilized with 0.1% PBST for 20 min at -20°C. The cells were then incubated in 5% BSA to block non-specific protein-protein interactions for 30 min at room temperature. The cells were stained with Primary Antibody for 30 min at room temperature. Acquisition of 20,000 events was performed.

FMNL3 Polyclonal Antibody - Protocols

Provided below are standard protocols that you may find useful for product applications.

- [Western Blot](#)
- [Blocking Peptides](#)
- [Dot Blot](#)
- [Immunohistochemistry](#)
- [Immunofluorescence](#)
- [Immunoprecipitation](#)
- [Flow Cytometry](#)
- [Cell Culture](#)