

C1orf216 Polyclonal Antibody
Purified Rabbit Polyclonal Antibody (Pab)
Catalog # AP55765**Specification****C1orf216 Polyclonal Antibody - Product Information**

Application	IHC-P
Primary Accession	Q8TAB5
Reactivity	Rat, Dog
Host	Rabbit
Clonality	Polyclonal
Calculated MW	24968

C1orf216 Polyclonal Antibody - Additional Information**Gene ID** 127703**Other Names**

UPF0500 protein C1orf216, C1orf216

Format

0.01M TBS(pH7.4) with 1% BSA, 0.09% (W/V) sodium azide and 50% Glyce

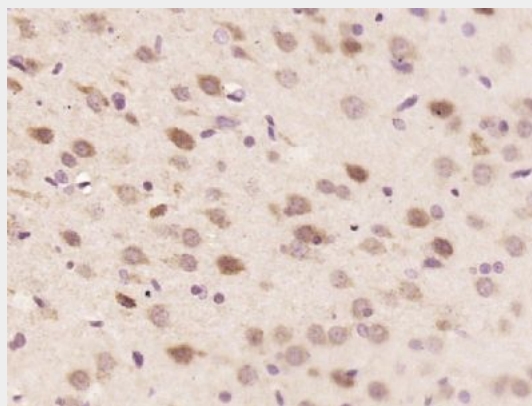
Storage

Store at -20 °C for one year. Avoid repeated freeze/thaw cycles. When reconstituted in sterile pH 7.4 0.01M PBS or diluent of antibody the antibody is stable for at least two weeks at 2-4 °C.

C1orf216 Polyclonal Antibody - Protein Information**Name** C1orf216**C1orf216 Polyclonal Antibody - Protocols**

Provided below are standard protocols that you may find useful for product applications.

- [Western Blot](#)
- [Blocking Peptides](#)
- [Dot Blot](#)
- [Immunohistochemistry](#)
- [Immunofluorescence](#)



Paraformaldehyde-fixed, paraffin embedded (rat brain tissue); Antigen retrieval by boiling in sodium citrate buffer (pH6.0) for 15min; Block endogenous peroxidase by 3% hydrogen peroxide for 20 minutes; Blocking buffer (normal goat serum) at 37°C for 30min; Antibody incubation with (C1orf216) Polyclonal Antibody, Unconjugated (bs-15058R) at 1:400 overnight at 4°C, followed by operating according to SP Kit(Rabbit) (sp-0023) instructions and DAB staining.

- [Immunoprecipitation](#)
- [Flow Cytometry](#)
- [Cell Culture](#)