

**HHAT Antibody (N-term)**  
**Affinity Purified Rabbit Polyclonal Antibody (Pab)**  
**Catalog # AP5503a**

**Specification**

**HHAT Antibody (N-term) - Product Information**

Application	<b>WB, IHC-P, FC,E</b>
Primary Accession	<a href="#">Q5VTY9</a>
Other Accession	<a href="#">NP_001116306.1</a>
Reactivity	<b>Human</b>
Host	<b>Rabbit</b>
Clonality	<b>Polyclonal</b>
Isotype	<b>Rabbit Ig</b>
Calculated MW	<b>57313</b>
Antigen Region	<b>30-59</b>

**HHAT Antibody (N-term) - Additional Information**

**Gene ID** 55733

**Other Names**

Protein-cysteine N-palmitoyltransferase  
HHAT, 231-, Hedgehog acyltransferase,  
Melanoma antigen recognized by T-cells 2,  
MART-2, Skinny hedgehog protein 1, HHAT,  
MART2, SKI1

**Target/Specificity**

This HHAT antibody is generated from rabbits immunized with a KLH conjugated synthetic peptide between 30-59 amino acids from the N-terminal region of human HHAT.

**Dilution**

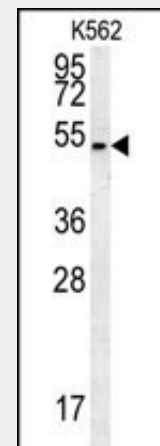
WB~~1:1000  
IHC-P~~1:50~100  
FC~~1:10~50

**Format**

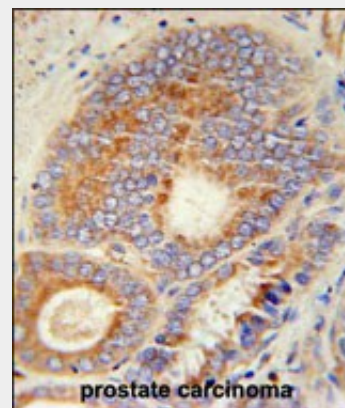
Purified polyclonal antibody supplied in PBS with 0.09% (W/V) sodium azide. This antibody is purified through a protein A column, followed by peptide affinity purification.

**Storage**

Maintain refrigerated at 2-8°C for up to 2 weeks. For long term storage store at -20°C in small aliquots to prevent freeze-thaw cycles.



HHAT Antibody (N-term) (Cat.#AP5503a) western blot analysis in K562 cell line lysates (35ug/lane).This demonstrates the HHAT antibody detected the HHAT protein (arrow).



HHAT Antibody (N-term) (Cat. #AP5503a) immunohistochemistry analysis in formalin fixed and paraffin embedded human prostate carcinoma followed by peroxidase conjugation of the secondary antibody and DAB staining. This data demonstrates the use of the HHAT Antibody (N-term) for immunohistochemistry. Clinical relevance has not been evaluated.

### Precautions

HHAT Antibody (N-term) is for research use only and not for use in diagnostic or therapeutic procedures.

### HHAT Antibody (N-term) - Protein Information

**Name** HHAT

**Synonyms** MART2, SKI1

### Function

Catalyzes N-terminal palmitoylation of SHH; which is required for SHH signaling. May bind GTP.

### Cellular Location

Endoplasmic reticulum membrane;  
Multi-pass membrane protein

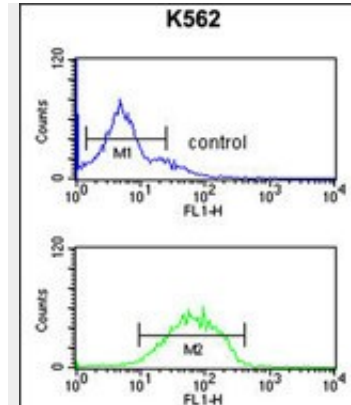
### Tissue Location

Ubiquitously expressed in normal tissues and cancer cell lines.

### HHAT Antibody (N-term) - Protocols

Provided below are standard protocols that you may find useful for product applications.

- [Western Blot](#)
- [Blocking Peptides](#)
- [Dot Blot](#)
- [Immunohistochemistry](#)
- [Immunofluorescence](#)
- [Immunoprecipitation](#)
- [Flow Cytometry](#)
- [Cell Culture](#)



HHAT Antibody (N-term) (Cat. #AP5503a) flow cytometric analysis of K562 cells (bottom histogram) compared to a negative control cell (top histogram). FITC-conjugated goat-anti-rabbit secondary antibodies were used for the analysis.

### HHAT Antibody (N-term) - Background

'Skinny hedgehog' (SKI1) encodes an enzyme that acts within the secretory pathway to catalyze amino-terminal palmitoylation of 'hedgehog' (see MIM 600725).

### HHAT Antibody (N-term) - References

- Chamoun, Z., et al. Science 293(5537):2080-2084(2001)  
Kawakami, Y., et al. J. Immunol. 166(4):2871-2877(2001)