

APBA1 Polyclonal Antibody
Purified Rabbit Polyclonal Antibody (Pab)
Catalog # AP54458**Specification****APBA1 Polyclonal Antibody - Product Information**

| | |
|-------------------|-------------------------------|
| Application | IHC-P |
| Primary Accession | O02410 |
| Reactivity | Rat, Pig, Dog, Cow |
| Host | Rabbit |
| Clonality | Polyclonal |
| Calculated MW | 92865 |

APBA1 Polyclonal Antibody - Additional Information**Gene ID** 320**Other Names**

Amyloid-beta A4 precursor protein-binding family A member 1, Adapter protein X11alpha, Neuron-specific X11 protein, Neuronal Munc18-1-interacting protein 1, Mint-1, APBA1, MINT1, X11

Format

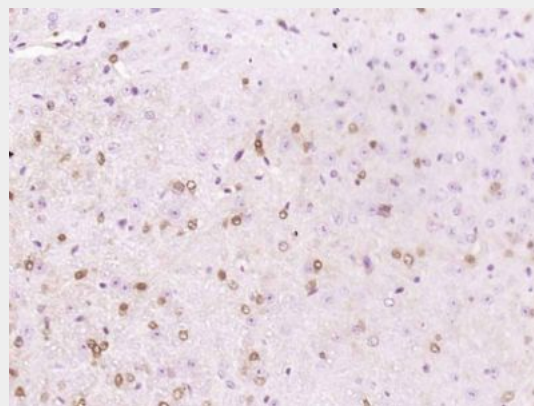
0.01M TBS(pH7.4) with 1% BSA, 0.09% (W/V) sodium azide and 50% Glyce

Storage

Store at -20 °C for one year. Avoid repeated freeze/thaw cycles. When reconstituted in sterile pH 7.4 0.01M PBS or diluent of antibody the antibody is stable for at least two weeks at 2-4 °C.

APBA1 Polyclonal Antibody - Protein Information**Name** APBA1**Synonyms** MINT1, X11**Function**

Putative function in synaptic vesicle exocytosis by binding to Munc18-1, an essential component of the synaptic vesicle exocytotic machinery. May modulate processing of the amyloid-beta precursor



Paraformaldehyde-fixed, paraffin embedded (Mouse brain); Antigen retrieval by boiling in sodium citrate buffer (pH6.0) for 15min; Block endogenous peroxidase by 3% hydrogen peroxide for 20 minutes; Blocking buffer (normal goat serum) at 37°C for 30min; Antibody incubation with (APBA1) Polyclonal Antibody, Unconjugated (bs-11334R) at 1:400 overnight at 4°C, followed by operating according to SP Kit(Rabbit) (sp-0023) instructions and DAB staining.

protein (APP) and hence formation of APP-beta. Component of the LIN-10-LIN-2-LIN-7 complex, which associates with the motor protein KIF17 to transport vesicles containing N-methyl-D-aspartate (NMDA) receptor subunit NR2B along microtubules (By similarity).

Cellular Location

Cytoplasm. Cytoplasm, perinuclear region. Nucleus. Note=Only about 5% of the protein is located in the nucleus

Tissue Location

Brain and spinal cord. Isoform 2 is expressed in testis and brain, but not detected in lung, liver or spleen

APBA1 Polyclonal Antibody - Protocols

Provided below are standard protocols that you may find useful for product applications.

- [Western Blot](#)
- [Blocking Peptides](#)
- [Dot Blot](#)
- [Immunohistochemistry](#)
- [Immunofluorescence](#)
- [Immunoprecipitation](#)
- [Flow Cytometry](#)
- [Cell Culture](#)