

Neurexin II alpha Polyclonal Antibody
Purified Rabbit Polyclonal Antibody (Pab)
Catalog # AP54375

Specification

Neurexin II alpha Polyclonal Antibody - Product Information

| | |
|-------------------|---------------------------|
| Application | IHC-P |
| Primary Accession | Q9P2S2 |
| Reactivity | Rat, Pig, Dog, Cow |
| Host | Rabbit |
| Clonality | Polyclonal |
| Calculated MW | 184982 |

Neurexin II alpha Polyclonal Antibody - Additional Information

Gene ID 9379

Other Names

Neurexin-2, Neurexin II-alpha, Neurexin-2-alpha, NRXN2, KIAA0921

Format

0.01M TBS(pH7.4) with 1% BSA, 0.09% (W/V) sodium azide and 50% Glyce

Storage

Store at -20 °C for one year. Avoid repeated freeze/thaw cycles. When reconstituted in sterile pH 7.4 0.01M PBS or diluent of antibody the antibody is stable for at least two weeks at 2-4 °C.

Neurexin II alpha Polyclonal Antibody - Protein Information

Name NRXN2

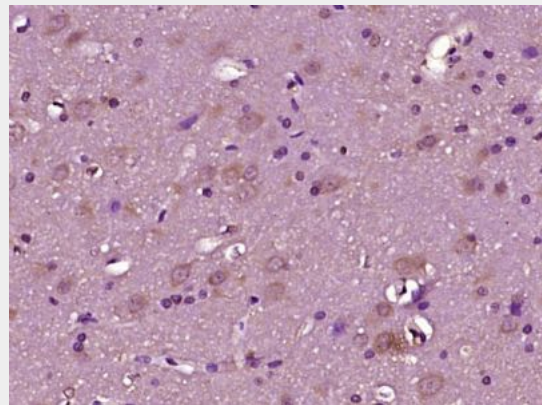
Synonyms KIAA0921

Function

Neuronal cell surface protein that may be involved in cell recognition and cell adhesion. May mediate intracellular signaling.

Cellular Location

Membrane; Single-pass type I membrane



Paraformaldehyde-fixed, paraffin embedded (rat brain tissue); Antigen retrieval by boiling in sodium citrate buffer (pH6.0) for 15min; Block endogenous peroxidase by 3% hydrogen peroxide for 20 minutes; Blocking buffer (normal goat serum) at 37°C for 30min; Antibody incubation with (Neurexin II alpha) Polyclonal Antibody, Unconjugated (bs-11104R) at 1:400 overnight at 4°C, followed by operating according to SP Kit(Rabbit) (sp-0023) instructions and DAB staining.

protein

Tissue Location

Predominantly expressed in brain.

**Neurexin II alpha Polyclonal Antibody -
Protocols**

Provided below are standard protocols that you may find useful for product applications.

- [Western Blot](#)
- [Blocking Peptides](#)
- [Dot Blot](#)
- [Immunohistochemistry](#)
- [Immunofluorescence](#)
- [Immunoprecipitation](#)
- [Flow Cytometry](#)
- [Cell Culture](#)