

Anti-Placental lactogen Antibody

Catalog # AP53997

Specification

Anti-Placental lactogen Antibody - Product Information

Application	WB
Primary Accession	PODML2
Other Accession	PODML3 , O14406
Reactivity	Human
Host	Rabbit
Clonality	Polyclonal
Calculated MW	25020

Anti-Placental lactogen Antibody - Additional Information

Gene ID 1442

Other Names

Chorionic somatomammotropin hormone; Chorionmammotropin; Lactogen; Placental lactogen; PL; CSHP1; CSL; Chorionic somatomammotropin hormone-like 1; Chorionic somatomammotropin-like; Lactogen-like

Target/Specificity

Recognizes endogenous levels of Placental lactogen protein.

Dilution

WB~~1/500 - 1/1000

Format

Liquid in 0.42% Potassium phosphate, 0.87% Sodium chloride, pH 7.3, 30% glycerol, and 0.01% sodium azide.

Storage

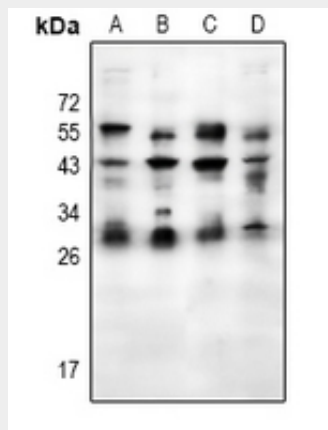
Store at -20 °C. Stable for 12 months from date of receipt

Anti-Placental lactogen Antibody - Protein Information

Name CSH1

Function

Produced only during pregnancy and is



Western blot analysis of Placental lactogen expression in Hela (A), A2780 (B), MCF7 (C), U87MG (D) whole cell lysates.

Anti-Placental lactogen Antibody - Background

Rabbit polyclonal antibody to Placental lactogen

involved in stimulating lactation, fetal growth and metabolism. Does not interact with GHR but only activates PRLR through zinc-induced dimerization.

Cellular Location

Secreted.

**Anti-Placental lactogen Antibody -
Protocols**

Provided below are standard protocols that you may find useful for product applications.

- [Western Blot](#)
- [Blocking Peptides](#)
- [Dot Blot](#)
- [Immunohistochemistry](#)
- [Immunofluorescence](#)
- [Immunoprecipitation](#)
- [Flow Cytometry](#)
- [Cell Culture](#)