

## MRPL15 Antibody

Purified Rabbit Polyclonal Antibody (Pab)  
Catalog # AP51363

### Specification

#### MRPL15 Antibody - Product Information

Application	WB
Primary Accession	<a href="#">Q9P015</a>
Reactivity	Human, Mouse
Host	Rabbit
Clonality	Polyclonal
Calculated MW	33 KDa
Antigen Region	171 - 230

#### MRPL15 Antibody - Additional Information

Gene ID 29088

#### Other Names

39S ribosomal protein L15, mitochondrial, L15mt, MRP-L15, MRPL15

#### Target/Specificity

KLH conjugated synthetic peptide derived from human MRPL15

#### Dilution

WB~~ 1:1000

#### Format

0.01M PBS, pH 7.2, 0.1% Sodium azide, Glycerol 50%

#### Storage

Store at -20 °C. Stable for 12 months from date of receipt

#### MRPL15 Antibody - Protein Information

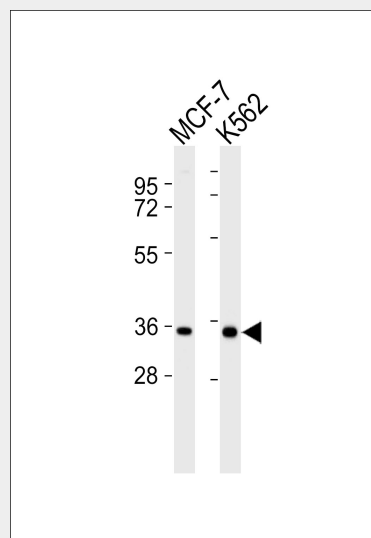
Name MRPL15

#### Cellular Location

Mitochondrion

### MRPL15 Antibody - Protocols

Provided below are standard protocols that you



All lanes : Anti-MRPL15 Antibody at 1:1000 dilution  
Lane 1: MCF-7 whole cell lysates  
Lane 2: K562 whole cell lysates  
Lysates/proteins at 20 µg per lane.  
Secondary Goat Anti-Rabbit IgG, (H+L), Peroxidase conjugated at 1/10000 dilution  
Predicted band size : 33 kDa  
Blocking/Dilution buffer: 5% NFDM/TBST.

### MRPL15 Antibody - References

- Zhang Q.-H., et al. *Genome Res.* 10:1546-1560(2000).  
Wiemann S., et al. *Genome Res.* 11:422-435(2001).  
Ebert L., et al. Submitted (JUN-2004) to the EMBL/GenBank/DDBJ databases.  
Kenmochi N., et al. *Genomics* 77:65-70(2001).  
Burkard T.R., et al. *BMC Syst. Biol.* 5:17-17(2011).

may find useful for product applications.

- [Western Blot](#)
- [Blocking Peptides](#)
- [Dot Blot](#)
- [Immunohistochemistry](#)
- [Immunofluorescence](#)
- [Immunoprecipitation](#)
- [Flow Cytometry](#)
- [Cell Culture](#)