

MED18 Antibody
Purified Rabbit Polyclonal Antibody (Pab)
Catalog # AP51339

Specification

MED18 Antibody - Product Information

Application	WB
Primary Accession	O9BUE0
Reactivity	Human, Mouse, Rat
Host	Rabbit
Clonality	Polyclonal
Calculated MW	24 KDa
Antigen Region	51 - 110

MED18 Antibody - Additional Information

Gene ID 54797

Other Names

Mediator of RNA polymerase II transcription subunit 18, Mediator complex subunit 18, p28b, MED18

Target/Specificity

KLH conjugated synthetic peptide derived from human MED18

Dilution

WB~~ 1:1000

Format

0.01M PBS, pH 7.2, 0.1% Sodium azide, Glycerol 50%

Storage

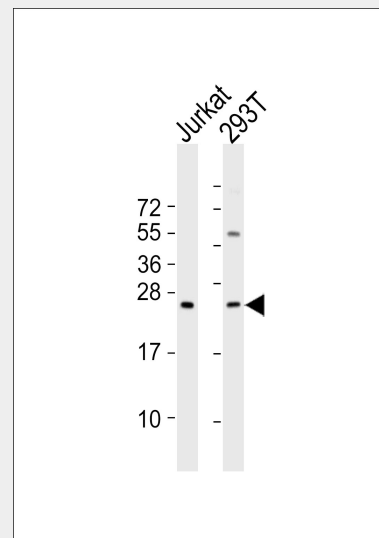
Store at -20 °C. Stable for 12 months from date of receipt

MED18 Antibody - Protein Information

Name MED18

Function

Component of the Mediator complex, a coactivator involved in the regulated transcription of nearly all RNA polymerase II-dependent genes. Mediator functions as a bridge to convey information from gene-



All lanes : Anti-MED18 Antibody at 1:1000 dilution Lane 1: Jurkat whole cell lysates Lane 2: 293T whole cell lysates Lysates/proteins at 20 µg per lane. Secondary Goat Anti-Rabbit IgG, (H+L), Peroxidase conjugated at 1/10000 dilution Predicted band size : 24 kDa Blocking/Dilution buffer: 5% NFDM/TBST.

MED18 Antibody - Background

Component of the Mediator complex, a coactivator involved in the regulated transcription of nearly all RNA polymerase II-dependent genes. Mediator functions as a bridge to convey information from gene-specific regulatory proteins to the basal RNA polymerase II transcription machinery. Mediator is recruited to promoters by direct interactions with regulatory proteins and serves as a scaffold for the assembly of a functional preinitiation complex with RNA polymerase II and the general transcription factors.

MED18 Antibody - References

Furumoto T., et al. Submitted (APR-2003) to the EMBL/GenBank/DDBJ databases.

specific regulatory proteins to the basal RNA polymerase II transcription machinery. Mediator is recruited to promoters by direct interactions with regulatory proteins and serves as a scaffold for the assembly of a functional preinitiation complex with RNA polymerase II and the general transcription factors.

Cellular Location

Nucleus.

Ota T., et al. Nat. Genet. 36:40-45(2004).
Gregory S.G., et al. Nature 441:315-321(2006).
Mural R.J., et al. Submitted (SEP-2005) to the EMBL/GenBank/DDBJ databases.
Sato S., et al. J. Biol. Chem. 278:15123-15127(2003).

MED18 Antibody - Protocols

Provided below are standard protocols that you may find useful for product applications.

- [Western Blot](#)
- [Blocking Peptides](#)
- [Dot Blot](#)
- [Immunohistochemistry](#)
- [Immunofluorescence](#)
- [Immunoprecipitation](#)
- [Flow Cytometry](#)
- [Cell Culture](#)