

FA13A (Cleaved-Gly39) Antibody
Purified Rabbit Polyclonal Antibody (Pab)
Catalog # AP50064

Specification

FA13A (Cleaved-Gly39) Antibody - Product Information

Application	WB
Primary Accession	P00488
Reactivity	Human
Host	Rabbit
Clonality	Polyclonal
Calculated MW	83 KDa
Antigen Region	30-59

FA13A (Cleaved-Gly39) Antibody - Additional Information

Gene ID 2162

Other Names

Coagulation factor XIII A chain, Coagulation factor XIIIa, Protein-glutamine gamma-glutamyltransferase A chain, Transglutaminase A chain, F13A1, F13A

Dilution

WB~~1:500- 1:1000

Format

Rabbit IgG in phosphate buffered saline (without Mg²⁺ and Ca²⁺), pH 7.4, 150mM NaCl, 0.09% (W/V) sodium azide and 50% glycerol.

Storage Conditions

-20°C

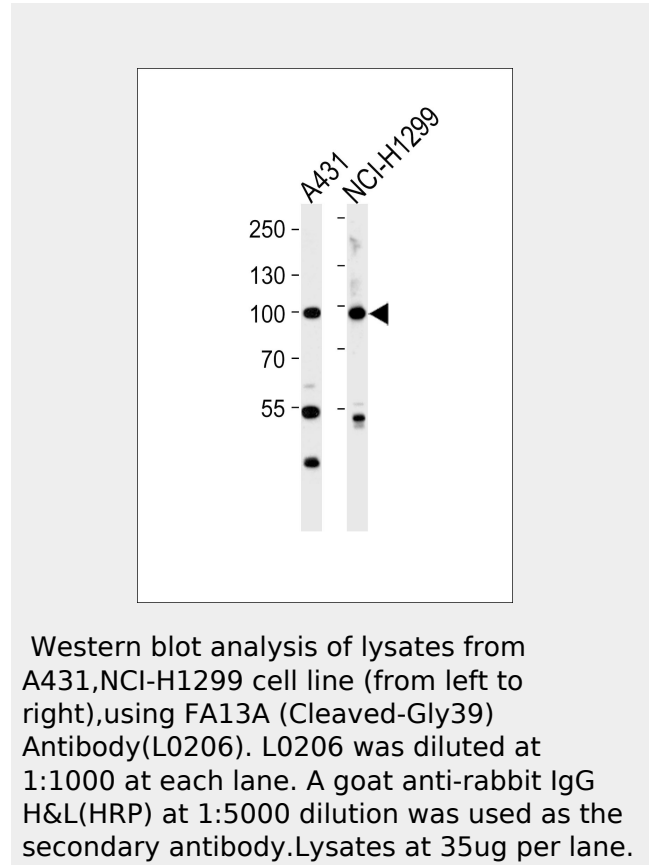
FA13A (Cleaved-Gly39) Antibody - Protein Information

Name F13A1

Synonyms F13A

Function

Factor XIII is activated by thrombin and calcium ion to a transglutaminase that catalyzes the formation of gamma-glutamyl- epsilon-lysine cross-links



FA13A (Cleaved-Gly39) Antibody - Background

Factor XIII is activated by thrombin and calcium ion to a transglutaminase that catalyzes the formation of gamma-glutamyl- epsilon-lysine cross-links between fibrin chains, thus stabilizing the fibrin clot. Also cross-link alpha-2-plasmin inhibitor, or fibronectin, to the alpha chains of fibrin.

FA13A (Cleaved-Gly39) Antibody - References

Ichinose A., et al. Biochemistry 25:6900-6906(1986).
Grundmann U., et al. Proc. Natl. Acad. Sci. U.S.A. 83:8024-8028(1986).
Ichinose A., et al. Proc. Natl. Acad. Sci. U.S.A. 85:5829-5833(1988).

between fibrin chains, thus stabilizing the fibrin clot. Also cross-link alpha-2-plasmin inhibitor, or fibronectin, to the alpha chains of fibrin.

Totoki Y.,et al.Submitted (MAR-2005) to the EMBL/GenBank/DDBJ databases.
Mungall A.J.,et al.Nature 425:805-811(2003).

Cellular Location

Cytoplasm. Secreted. Note=Secreted into the blood plasma. Cytoplasmic in most tissues, but also secreted in the blood plasma

FA13A (Cleaved-Gly39) Antibody - Protocols

Provided below are standard protocols that you may find useful for product applications.

- [Western Blot](#)
- [Blocking Peptides](#)
- [Dot Blot](#)
- [Immunohistochemistry](#)
- [Immunofluorescence](#)
- [Immunoprecipitation](#)
- [Flow Cytometry](#)
- [Cell Culture](#)