

**Adrenergic Receptor alpha-2B Antibody**  
**Purified Rabbit Polyclonal Antibody (Pab)**  
**Catalog # AP50039**

**Specification**

**Adrenergic Receptor alpha-2B Antibody - Product Information**

Application	<b>IF, WB</b>
Primary Accession	<a href="#">P18089</a>
Reactivity	<b>Human</b>
Host	<b>Rabbit</b>
Clonality	<b>Polyclonal</b>
Calculated MW	<b>50 KDa</b>
Antigen Region	<b>180-211</b>

**Adrenergic Receptor alpha-2B Antibody - Additional Information**

**Gene ID 151**

**Other Names**

Alpha-2B adrenergic receptor, Alpha-2 adrenergic receptor subtype C2, Alpha-2B adrenoreceptor, Alpha-2B adrenoceptor, Alpha-2BAR, ADRA2B, ADRA2L1, ADRA2RL1

**Dilution**

IF~~1:100  
WB~~ 1:1000

**Format**

Rabbit IgG in phosphate buffered saline (without Mg<sup>2+</sup> and Ca<sup>2+</sup>), pH 7.4, 150mM NaCl, 0.09% (W/V) sodium azide and 50% glycerol.

**Storage Conditions**

-20°C

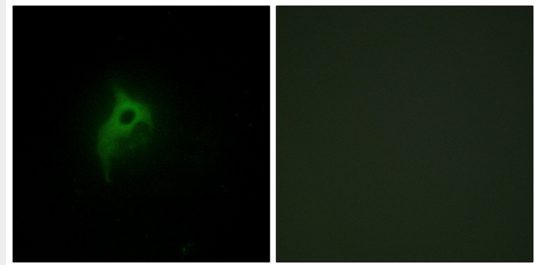
**Adrenergic Receptor alpha-2B Antibody - Protein Information**

**Name** ADRA2B

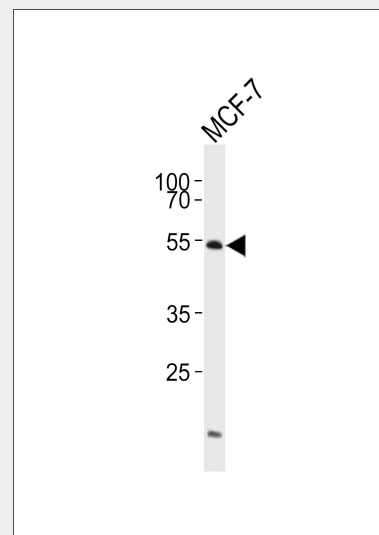
**Synonyms** ADRA2L1, ADRA2RL1

**Function**

Alpha-2 adrenergic receptors mediate the catecholamine- induced inhibition of adenylate cyclase through the action of G



Immunofluorescence analysis of HepG2 cells, using Adrenergic Receptor alpha-2B antibody.



Western blot analysis of lysates from MCF-7 cell line ,using Adrenergic Receptor alpha-2B Antibody(C10415). C10415 was diluted at 1:1000. A goat anti-rabbit IgG H&L(HRP) at 1:5000 dilution was used as the secondary antibody.Lysates at 35ug.

**Adrenergic Receptor alpha-2B Antibody - Background**

Alpha-2 adrenergic receptors mediate the catecholamine- induced inhibition of adenylate cyclase through the action of G proteins. The rank order of potency for agonists of this receptor is clonidine > norepinephrine >

proteins. The rank order of potency for agonists of this receptor is clonidine > norepinephrine > epinephrine = oxymetazoline > dopamine > p-tyramine = phenylephrine > serotonin > p-synephrine / p-octopamine. For antagonists, the rank order is yohimbine > chlorpromazine > phentolamine > mianserine > spiperone > prazosin > alprenolol > propanolol > pindolol.

#### **Cellular Location**

Cell membrane; Multi-pass membrane protein. Note=Interaction with RAB26, GGA1, GGA2 and GGA3 mediates transport from the Golgi to the cell membrane.

#### **Adrenergic Receptor alpha-2B Antibody - Protocols**

Provided below are standard protocols that you may find useful for product applications.

- [Western Blot](#)
- [Blocking Peptides](#)
- [Dot Blot](#)
- [Immunohistochemistry](#)
- [Immunofluorescence](#)
- [Immunoprecipitation](#)
- [Flow Cytometry](#)
- [Cell Culture](#)

epinephrine = oxymetazoline > dopamine > p-tyramine = phenylephrine > serotonin > p-synephrine / p-octopamine. For antagonists, the rank order is yohimbine > chlorpromazine > phentolamine > mianserine > spiperone > prazosin > alprenolol > propanolol > pindolol.

#### **Adrenergic Receptor alpha-2B Antibody - References**

Lomasney J.W., et al. Proc. Natl. Acad. Sci. U.S.A. 87:5094-5098(1990).  
Weinshank R.L., et al. Mol. Pharmacol. 38:681-688(1990).  
Small K.M., et al. J. Biol. Chem. 276:4917-4922(2001).  
Cayla C., et al. Biochem. Pharmacol. 67:469-478(2004).  
Kopatz S.A., et al. Submitted (FEB-2004) to the EMBL/GenBank/DDBJ databases.