

THBD Antibody
Purified Rabbit Polyclonal Antibody (Pab)
Catalog # AP50031

Specification

THBD Antibody - Product Information

Application	WB
Primary Accession	P07204
Reactivity	Human
Host	Rabbit
Clonality	Polyclonal
Calculated MW	60 KDa
Antigen Region	550-575

THBD Antibody - Additional Information

Gene ID 7056

Other Names

Thrombomodulin, TM, Fetomodulin, CD141, THBD, THRM

Dilution

WB~~ 1:1000

Format

Rabbit IgG in phosphate buffered saline (without Mg²⁺ and Ca²⁺), pH 7.4, 150mM NaCl, 0.09% (W/V) sodium azide and 50% glycerol.

Storage Conditions

-20°C

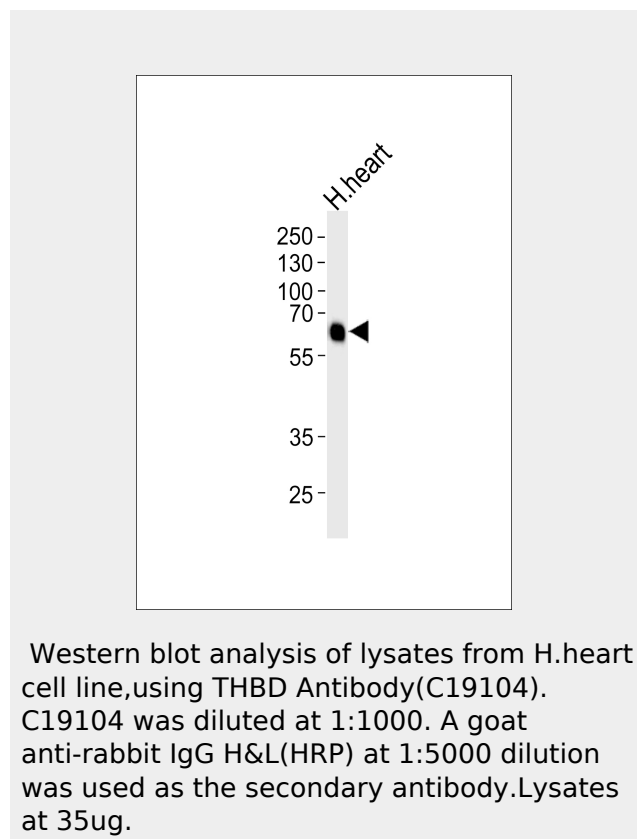
THBD Antibody - Protein Information

Name THBD

Synonyms THRM

Function

Thrombomodulin is a specific endothelial cell receptor that forms a 1:1 stoichiometric complex with thrombin. This complex is responsible for the conversion of protein C to the activated protein C (protein Ca). Once evolved, protein Ca scissions the activated cofactors of the coagulation mechanism, factor Va and factor VIIIa, and



THBD Antibody - Background

Thrombomodulin is a specific endothelial cell receptor that forms a 1:1 stoichiometric complex with thrombin. This complex is responsible for the conversion of protein C to the activated protein C (protein Ca). Once evolved, protein Ca scissions the activated cofactors of the coagulation mechanism, factor Va and factor VIIIa, and thereby reduces the amount of thrombin generated.

THBD Antibody - References

- Suzuki K., et al. EMBO J. 6:1891-1897(1987).
- Wen D., et al. Biochemistry 26:4350-4357(1987).
- Jackman R.W., et al. Proc. Natl. Acad. Sci. U.S.A. 84:6425-6429(1987).
- Shirai T., et al. J. Biochem. 103:281-285(1988).
- Deloukas P., et al. Nature 414:865-871(2001).

thereby reduces the amount of thrombin generated.

Cellular Location

Membrane; Single-pass type I membrane protein.

Tissue Location

Endothelial cells are unique in synthesizing thrombomodulin

THBD Antibody - Protocols

Provided below are standard protocols that you may find useful for product applications.

- [Western Blot](#)
- [Blocking Peptides](#)
- [Dot Blot](#)
- [Immunohistochemistry](#)
- [Immunofluorescence](#)
- [Immunoprecipitation](#)
- [Flow Cytometry](#)
- [Cell Culture](#)