

**TPI1 Antibody (N-term)**  
**Purified Rabbit Polyclonal Antibody (Pab)**  
**Catalog # AP2917a**

**Specification**

**TPI1 Antibody (N-term) - Product Information**

Application	<b>WB, IHC-P, FC,E</b>
Primary Accession	<a href="#">P60174</a>
Other Accession	<a href="#">P48500</a> , <a href="#">P00939</a> , <a href="#">Q29371</a> , <a href="#">P17751</a> , <a href="#">Q60HC9</a> , <a href="#">Q5E956</a>
Reactivity Predicted	<b>Human, Mouse Bovine, Monkey, Pig, Rabbit, Rat</b>
Host	<b>Rabbit</b>
Clonality	<b>Polyclonal</b>
Isotype	<b>Rabbit Ig</b>
Calculated MW	<b>26669</b>
Antigen Region	<b>68-96</b>

**TPI1 Antibody (N-term) - Additional Information**

**Gene ID** 7167

**Other Names**

Triosephosphate isomerase, TIM,  
 Triose-phosphate isomerase, TPI1, TPI

**Target/Specificity**

This TPI1 antibody is generated from rabbits immunized with a KLH conjugated synthetic peptide between 68-96 amino acids from the N-terminal region of human TPI1.

**Dilution**

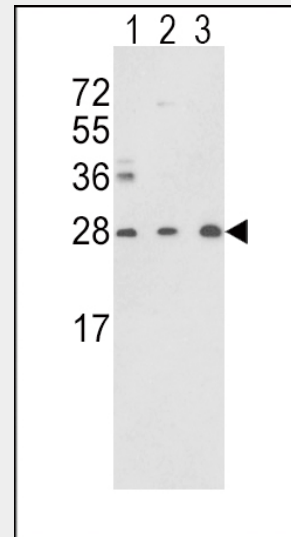
WB~~1:1000  
 IHC-P~~1:10~50  
 FC~~1:10~50

**Format**

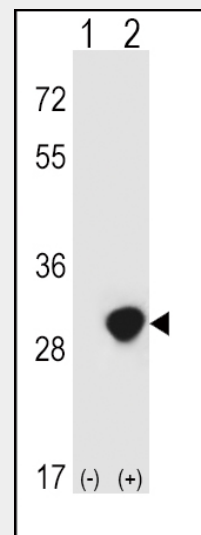
Purified polyclonal antibody supplied in PBS with 0.09% (W/V) sodium azide. This antibody is prepared by Saturated Ammonium Sulfate (SAS) precipitation followed by dialysis against PBS.

**Storage**

Maintain refrigerated at 2-8°C for up to 2 weeks. For long term storage store at -20°C in small aliquots to prevent freeze-thaw cycles.



Western blot analysis of TPI1 Antibody (N-term) (Cat. #AP2917a) in Y79(lane 1),CEM(lane 2) cell line and mouse brain tissue(lane 3) lysates (35ug/lane). TPI1 (arrow) was detected using the purified Pab.(2ug/ml)



Western blot analysis of TPI1 (arrow) using rabbit polyclonal TPI1 Antibody (N-term) (Cat. #AP2917a). 293 cell lysates (2 ug/lane) either nontransfected (Lane 1) or transiently transfected (Lane 2) with the TPI1 gene.

### Precautions

TPI1 Antibody (N-term) is for research use only and not for use in diagnostic or therapeutic procedures.

### TPI1 Antibody (N-term) - Protein Information

**Name** TPI1

**Synonyms** TPI

### Function

Triosephosphate isomerase is an extremely efficient metabolic enzyme that catalyzes the interconversion between dihydroxyacetone phosphate (DHAP) and D-glyceraldehyde-3-phosphate (G3P) in glycolysis and gluconeogenesis.

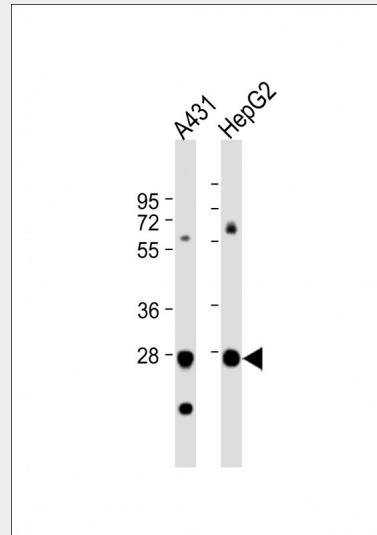
### Cellular Location

Cytoplasm  
{ECO:0000255|PROSITE-ProRule:PRU10127}  
}.

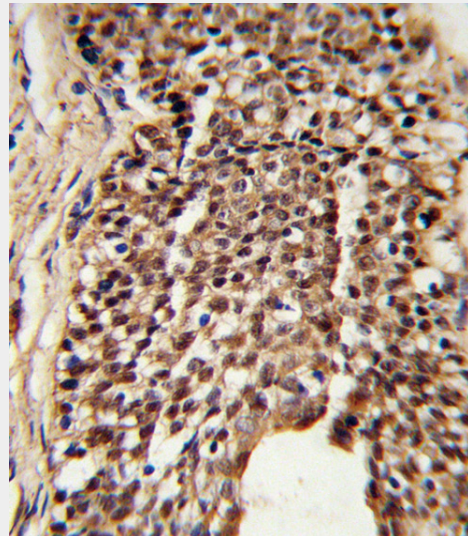
### TPI1 Antibody (N-term) - Protocols

Provided below are standard protocols that you may find useful for product applications.

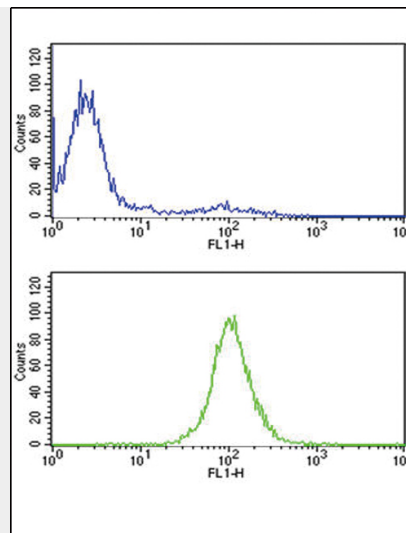
- [Western Blot](#)
- [Blocking Peptides](#)
- [Dot Blot](#)
- [Immunohistochemistry](#)
- [Immunofluorescence](#)
- [Immunoprecipitation](#)
- [Flow Cytometry](#)
- [Cell Culture](#)



All lanes : Anti-TPI1 Antibody (N-term) at 1:1000 dilution Lane 1: A431 whole cell lysate Lane 2: HepG2 whole cell lysate Lysates/proteins at 20 µg per lane. Secondary Goat Anti-Rabbit IgG, (H+L), Peroxidase conjugated at 1/10000 dilution. Predicted band size : 31 kDa Blocking/Dilution buffer: 5% NFD/MTBST.



Formalin-fixed and paraffin-embedded human prostate carcinoma reacted with TPI1 Antibody (N-term), which was peroxidase-conjugated to the secondary antibody, followed by DAB staining. This data demonstrates the use of this antibody for immunohistochemistry; clinical relevance has not been evaluated.



TPI1 Antibody (N-term) (Cat. #AP2917a) flow cytometric analysis of CEM cells (bottom histogram) compared to a negative control cell (top histogram). FITC-conjugated goat-anti-rabbit secondary antibodies were used for the analysis.

#### **TPI1 Antibody (N-term) - Background**

TPI1 is an enzyme, consisting of two identical proteins, which catalyzes the isomerization of glyceraldehydes 3-phosphate (G3P) and dihydroxy-acetone phosphate (DHAP) in glycolysis and gluconeogenesis.

#### **TPI1 Antibody (N-term) - References**

Martins-de-Souza, D., et al., BMC Psychiatry 9, 17 (2009)