

**CYP26A1 Antibody (Center)**  
**Purified Rabbit Polyclonal Antibody (Pab)**  
**Catalog # AP2754c**

**Specification**

**CYP26A1 Antibody (Center) - Product Information**

Application	<b>WB,E</b>
Primary Accession	<a href="#">O43174</a>
Other Accession	<a href="#">Q5VXI0</a>
Reactivity	<b>Human</b>
Host	<b>Rabbit</b>
Clonality	<b>Polyclonal</b>
Isotype	<b>Rabbit Ig</b>
Calculated MW	<b>56199</b>
Antigen Region	<b>118-147</b>

**CYP26A1 Antibody (Center) - Additional Information**

**Gene ID** 1592

**Other Names**

Cytochrome P450 26A1, 114--, Cytochrome P450 retinoic acid-inactivating 1, Cytochrome P450RA1, hP450RA1, Retinoic acid 4-hydroxylase, Retinoic acid-metabolizing cytochrome, CYP26A1, CYP26, P450RA11

**Target/Specificity**

This CYP26A1 antibody is generated from rabbits immunized with a KLH conjugated synthetic peptide between 118-147 amino acids from the Central region of human CYP26A1.

**Dilution**

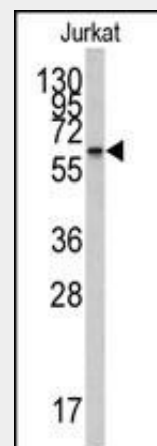
WB~~1:1000

**Format**

Purified polyclonal antibody supplied in PBS with 0.09% (W/V) sodium azide. This antibody is prepared by Saturated Ammonium Sulfate (SAS) precipitation followed by dialysis against PBS.

**Storage**

Maintain refrigerated at 2-8°C for up to 2 weeks. For long term storage store at -20°C in small aliquots to prevent freeze-thaw cycles.



Western blot analysis of anti-CYP26A1 Antibody (Center) (Cat.#AP2754c) in Jurkat cell line lysates (35ug/lane).CYP26A1(arrow) was detected using the purified Pab.

**CYP26A1 Antibody (Center) - Background**

CYP26A1 is a member of the cytochrome P450 superfamily of enzymes. The cytochrome P450 proteins are monooxygenases which catalyze many reactions involved in drug metabolism and synthesis of cholesterol, steroids and other lipids.This endoplasmic reticulum protein acts on retinoids, including all-trans-retinoic acid (RA), with both 4-hydroxylation and 18-hydroxylation activities. This enzyme regulates the cellular level of retinoic acid which is involved in regulation of gene expression in both embryonic and adult tissues.

**CYP26A1 Antibody (Center) - References**

Quere,R., Blood 109 (10), 4450-4460 (2007)  
Lee,S.J., Pharmacogenet. Genomics 17 (3), 169-180 (2007)  
Heise,R., J. Invest. Dermatol. 126 (11), 2473-2480 (2006)

### Precautions

CYP26A1 Antibody (Center) is for research use only and not for use in diagnostic or therapeutic procedures.

### CYP26A1 Antibody (Center) - Protein Information

#### Name CYP26A1

{ECO:0000303|PubMed:26937021,  
ECO:0000312|HGNC:HGNC:2603}

#### Function

A cytochrome P450 monooxygenase involved in the metabolism of all-trans retinoic acid (atRA), a signaling molecule that binds to retinoic acid receptors and regulates gene transcription. Mechanistically, uses molecular oxygen inserting one oxygen atom into a substrate, and reducing the second into a water molecule, with two electrons provided by NADPH via cytochrome P450 reductase (CPR; NADPH- ferrihemoprotein reductase). Catalyzes the hydroxylation of carbon hydrogen bonds of atRA primarily at C-4 and C-18. Has no activity toward 9-cis and 13-cis retinoic acid stereoisomers (PubMed:<a href="http://www.uniprot.org/citations/22020119" target="\_blank">22020119</a>, PubMed:<a href="http://www.uniprot.org/citations/9228017" target="\_blank">9228017</a>, PubMed:<a href="http://www.uniprot.org/citations/9716180" target="\_blank">9716180</a>). May play a role in the oxidative metabolism of xenobiotics such as tazarotenic acid (PubMed:<a href="http://www.uniprot.org/citations/26937021" target="\_blank">26937021</a>).

#### Cellular Location

Endoplasmic reticulum membrane; Peripheral membrane protein. Microsome membrane; Peripheral membrane protein

#### Tissue Location

Expressed in most fetal and adult tissues with highest levels in adult liver, heart, pituitary gland, adrenal gland, placenta and regions of the brain (PubMed:9826557). Expressed at high levels in lung, pancreas, skin and uterus (at protein level) (PubMed:22020119). Lower expression level is detected in spleen, kidney, intestine and

adipose tissue (at protein level)  
(PubMed:22020119).

### **CYP26A1 Antibody (Center) - Protocols**

Provided below are standard protocols that you may find useful for product applications.

- [Western Blot](#)
- [Blocking Peptides](#)
- [Dot Blot](#)
- [Immunohistochemistry](#)
- [Immunofluorescence](#)
- [Immunoprecipitation](#)
- [Flow Cytometry](#)
- [Cell Culture](#)