

**SEMA6A Antibody (N-term)**  
**Affinity Purified Rabbit Polyclonal Antibody (Pab)**  
**Catalog # AP2740a**

**Specification**

**SEMA6A Antibody (N-term) - Product Information**

Application	WB,E
Primary Accession	<a href="#">O9H2E6</a>
Other Accession	<a href="#">O35464</a> , <a href="#">NP_065847.1</a>
Reactivity	Human
Predicted	Mouse
Host	Rabbit
Clonality	Polyclonal
Isotype	Rabbit Ig
Calculated MW	114395
Antigen Region	29-57

**SEMA6A Antibody (N-term) - Additional Information**

**Gene ID** 57556

**Other Names**

Semaphorin-6A, Semaphorin VIA, Sema VIA, Semaphorin-6A-1, SEMA6A-1, SEMA6A, KIAA1368, SEMAQ

**Target/Specificity**

This SEMA6A antibody is generated from rabbits immunized with a KLH conjugated synthetic peptide between 29-57 amino acids from the N-terminal region of human SEMA6A.

**Dilution**

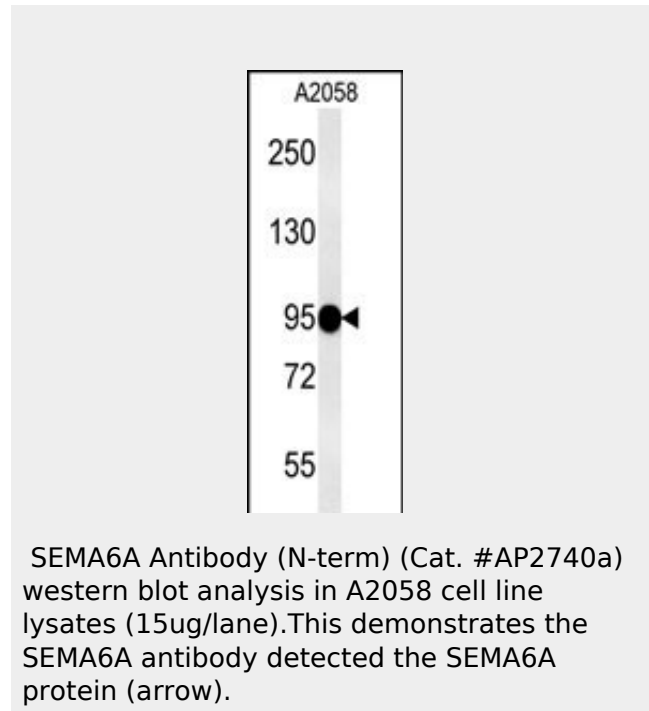
WB~~1:1000

**Format**

Purified polyclonal antibody supplied in PBS with 0.09% (W/V) sodium azide. This antibody is purified through a protein A column, followed by peptide affinity purification.

**Storage**

Maintain refrigerated at 2-8°C for up to 2 weeks. For long term storage store at -20°C in small aliquots to prevent freeze-thaw cycles.



**SEMA6A Antibody (N-term) - Background**

SEMA6A belongs to a subfamily characterized by an extracellular semaphorin domain, a transmembrane domain, and a long cytoplasmic tail. Members of this class can repel sympathetic and dorsal root ganglion axons in vitro, consistent with a traditional role as guidance signals. However, the length of the cytoplasmic tail, which includes an EVL-binding site in SEMA6A and an Src-binding site in SEMA6B, suggests that these semaphorins may also function as receptors. SEMA6A is expressed in developing neural tissue and is required for proper development of the thalamocortical projection. SEMA6A directly links the Ena/VASP and the semaphorin protein families since the SEMA6A protein is capable of selective binding to the protein EVL (Ena/VASP-like protein).

**SEMA6A Antibody (N-term) - References**

Johnson, M.P., et al. Hum. Genet. 126(5):655-666(2009)

**Precautions**

SEMA6A Antibody (N-term) is for research use only and not for use in diagnostic or therapeutic procedures.

Landers, J.E., et al. Proc. Natl. Acad. Sci. U.S.A. 106(22):9004-9009(2009)

Prislei, S., et al. Mol. Cancer Ther. 7(1):233-241(2008)

**SEMA6A Antibody (N-term) - Protein Information**

**Name** SEMA6A

**Synonyms** KIAA1368, SEMAQ

**Function**

Cell surface receptor for PLXNA2 that plays an important role in cell-cell signaling. Required for normal granule cell migration in the developing cerebellum. Promotes reorganization of the actin cytoskeleton and plays an important role in axon guidance in the developing central nervous system. Can act as repulsive axon guidance cue. Has repulsive action towards migrating granular neurons. May play a role in channeling sympathetic axons into the sympathetic chains and controlling the temporal sequence of sympathetic target innervation.

**Cellular Location**

Cell membrane; Single-pass type I membrane protein

**SEMA6A Antibody (N-term) - Protocols**

Provided below are standard protocols that you may find useful for product applications.

- [Western Blot](#)
- [Blocking Peptides](#)
- [Dot Blot](#)
- [Immunohistochemistry](#)
- [Immunofluorescence](#)
- [Immunoprecipitation](#)
- [Flow Cytometry](#)
- [Cell Culture](#)