

Ihh Antibody (C-term)
Affinity Purified Rabbit Polyclonal Antibody (Pab)
Catalog # AP2704b

Specification

Ihh Antibody (C-term) - Product Information

Application	WB,E
Primary Accession	Q80X19
Other Accession	Q91612 , P97812 , Q14623 , Q98862 , Q98938
Reactivity Predicted	Human, Mouse Chicken, Zebrafish, Xenopus
Host	Rabbit
Clonality	Polyclonal
Isotype	Rabbit Ig
Calculated MW	49445
Antigen Region	169-200

Ihh Antibody (C-term) - Additional Information

Gene ID 16147

Other Names
Indian hedgehog

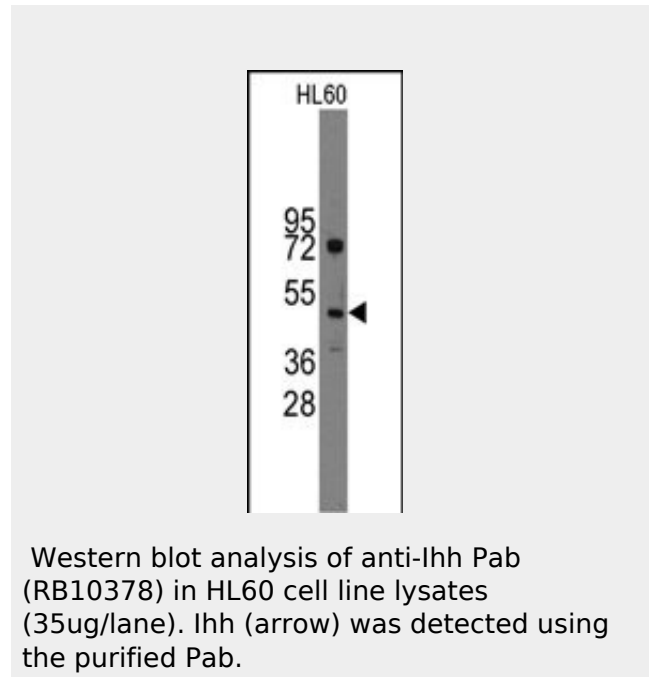
Target/Specificity
This Ihh antibody is generated from rabbits immunized with a KLH conjugated synthetic peptide between 169-200 amino acids from the C-terminal region of human Ihh.

Dilution
WB~~1:1000

Format
Purified polyclonal antibody supplied in PBS with 0.09% (W/V) sodium azide. This antibody is prepared by Saturated Ammonium Sulfate (SAS) precipitation followed by dialysis against PBS.

Storage
Maintain refrigerated at 2-8°C for up to 2 weeks. For long term storage store at -20°C in small aliquots to prevent freeze-thaw cycles.

Precautions



Ihh Antibody (C-term) - Background

Ihh (Indian hedgehog) is a critical and possibly direct regulator of joint development. In its absence, distribution and function of Gdf5-expressing interzone-associated cells are abnormal.

Ihh Antibody (C-term) - References

Kobayashi,T., Proc. Natl. Acad. Sci. U.S.A. 105 (6), 1949-1954 (2008)
Gat-Yablonski,G.,J. Pediatr. Endocrinol. Metab. 20 (11), 1215-1222 (2007)
Koyama,E., Ann. N. Y. Acad. Sci. 1116, 100-112 (2007)

Ihh Antibody (C-term) is for research use only and not for use in diagnostic or therapeutic procedures.

Ihh Antibody (C-term) - Protein Information

Name Ihh

{ECO:0000313|EMBL:AAH46984.1,
ECO:0000313|MGI:MGI:96533}

Function

Intercellular signal essential for a variety of patterning events during development.

Cellular Location

Cell membrane

{ECO:0000256|ARBA:ARBA00004404};

Lipid-anchor

{ECO:0000256|ARBA:ARBA00004404};

Extracellular side

{ECO:0000256|ARBA:ARBA00004404}.

Secreted, extracellular space

{ECO:0000256|ARBA:ARBA00004239}

Ihh Antibody (C-term) - Protocols

Provided below are standard protocols that you may find useful for product applications.

- [Western Blot](#)
- [Blocking Peptides](#)
- [Dot Blot](#)
- [Immunohistochemistry](#)
- [Immunofluorescence](#)
- [Immunoprecipitation](#)
- [Flow Cytometry](#)
- [Cell Culture](#)