

TrpE Antibody
Purified Rabbit Polyclonal Antibody (Pab)
Catalog # AP22229a

Specification

TrpE Antibody - Product Information

Application	WB,E
Primary Accession	D2QA15
Host	Rabbit
Clonality	polyclonal
Isotype	Rabbit Ig

TrpE Antibody - Additional Information

Other Names

TrpE Anthranilate synthase component I,
BIFDB

Target/Specificity

This TrpE antibody is generated from a rabbit immunized with a KLH conjugated synthetic peptide between 05-39 amino acids from the Bifidobacterium TrpE.

Dilution

WB~~1:2000

Format

Purified polyclonal antibody supplied in PBS with 0.09% (W/V) sodium azide. This antibody is purified through a protein A column, followed by peptide affinity purification.

Storage

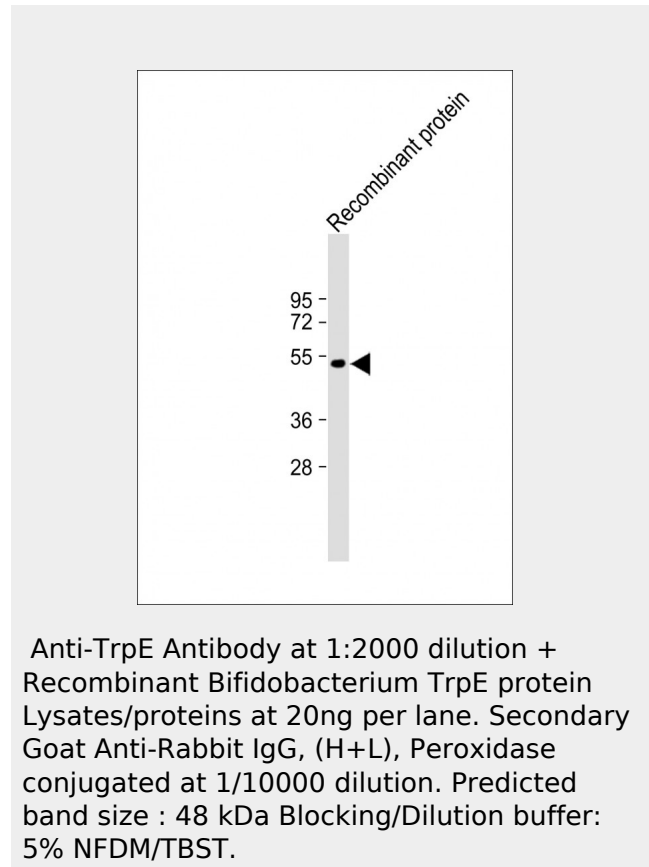
Maintain refrigerated at 2-8°C for up to 2 weeks. For long term storage store at -20°C in small aliquots to prevent freeze-thaw cycles.

Precautions

TrpE Antibody is for research use only and not for use in diagnostic or therapeutic procedures.

TrpE Antibody - Protein Information

TrpE Antibody - Protocols



Provided below are standard protocols that you may find useful for product applications.

- [Western Blot](#)
- [Blocking Peptides](#)
- [Dot Blot](#)
- [Immunohistochemistry](#)
- [Immunofluorescence](#)
- [Immunoprecipitation](#)
- [Flow Cytometry](#)
- [Cell Culture](#)