

SLC29A2 Antibody (N-Term)
Purified Rabbit Polyclonal Antibody (Pab)
Catalog # AP22096a

Specification

SLC29A2 Antibody (N-Term) - Product Information

Application	WB, IHC-P, FC,E
Primary Accession	Q14542
Reactivity	Human
Host	Rabbit
Clonality	polyclonal
Isotype	Rabbit Ig
Calculated MW	50113

SLC29A2 Antibody (N-Term) - Additional Information

Gene ID 3177

Other Names

Equilibrative nucleoside transporter 2, 36 kDa nucleolar protein HNP36, Delayed-early response protein 12, Equilibrative nitrobenzylmercaptapurine riboside-insensitive nucleoside transporter, Equilibrative NBMPR-insensitive nucleoside transporter, Hydrophobic nucleolar protein, 36 kDa, Nucleoside transporter, ei-type, Solute carrier family 29 member 2, SLC29A2, DER12, ENT2, HNP36

Target/Specificity

This SLC29A2 antibody is generated from a rabbit immunized with a KLH conjugated synthetic peptide between 1-31 amino acids from human SLC29A2.

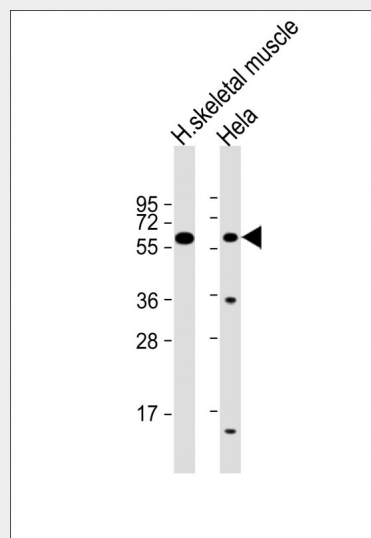
Dilution

WB~~1:2000
IHC-P~~1:25
FC~~1:25

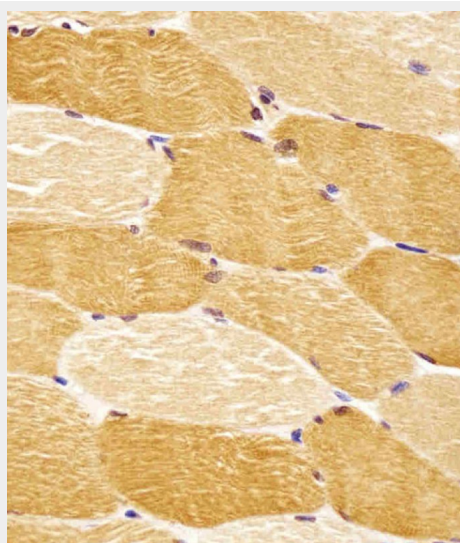
Format

Purified polyclonal antibody supplied in PBS with 0.09% (W/V) sodium azide. This antibody is purified through a protein A column, followed by peptide affinity purification.

Storage



All lanes : Anti-SLC29A2 Antibody (N-Term) at 1:2000 dilution Lane 1: human skeletal muscle lysate Lane 2: Hela whole cell lysate Lysates/proteins at 20 µg per lane. Secondary Goat Anti-Rabbit IgG, (H+L), Peroxidase conjugated at 1/10000 dilution. Predicted band size : 50 kDa Blocking/Dilution buffer: 5% NFDm/TBST.



AP22096a staining SLC29A2 in human skeletal muscle tissue sections by Immunohistochemistry (IHC-P -

Maintain refrigerated at 2-8°C for up to 2 weeks. For long term storage store at -20°C in small aliquots to prevent freeze-thaw cycles.

Precautions

SLC29A2 Antibody (N-Term) is for research use only and not for use in diagnostic or therapeutic procedures.

SLC29A2 Antibody (N-Term) - Protein Information

Name SLC29A2

Synonyms DER12, ENT2, HNP36

Function

Mediates equilibrative transport of purine, pyrimidine nucleosides and the purine base hypoxanthine. Very less sensitive than SLC29A1 to inhibition by nitrobenzylthioinosine (NBMPR), dipyridamole, dilazep and draflazine.

Cellular Location

Basolateral cell membrane; Multi-pass membrane protein. Nucleus membrane; Multi-pass membrane protein.
Note=Localized at the basolateral cell membrane in polarized MDCK cells

Tissue Location

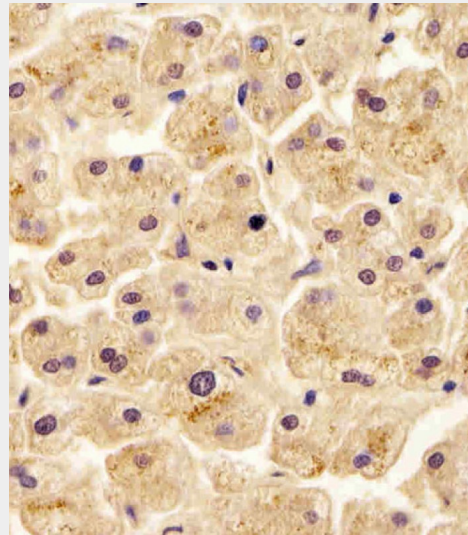
Expressed in skeletal muscle, liver, lung, placenta, brain, heart, kidney and ovarian tissues

SLC29A2 Antibody (N-Term) - Protocols

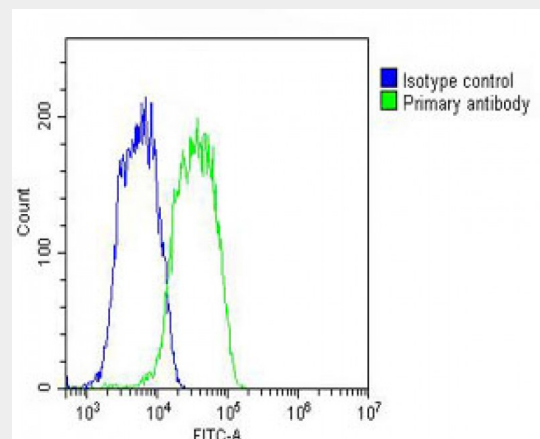
Provided below are standard protocols that you may find useful for product applications.

- [Western Blot](#)
- [Blocking Peptides](#)
- [Dot Blot](#)
- [Immunohistochemistry](#)
- [Immunofluorescence](#)
- [Immunoprecipitation](#)
- [Flow Cytometry](#)
- [Cell Culture](#)

paraformaldehyde-fixed, paraffin-embedded sections). Tissue was fixed with formaldehyde and blocked with 3% BSA for 0.5 hour at room temperature; antigen retrieval was by heat mediation with a citrate buffer (pH6). Samples were incubated with primary antibody (1/25) for 1 hours at 37°C. A undiluted biotinylated goat polyvalent antibody was used as the secondary antibody.



AP22096a staining SLC29A2 in human liver tissue sections by Immunohistochemistry (IHC-P - paraformaldehyde-fixed, paraffin-embedded sections). Tissue was fixed with formaldehyde and blocked with 3% BSA for 0.5 hour at room temperature; antigen retrieval was by heat mediation with a citrate buffer (pH6). Samples were incubated with primary antibody (1/25) for 1 hours at 37°C. A undiluted biotinylated goat polyvalent antibody was used as the secondary antibody.



Overlay histogram showing HepG2 cells

stained with AP22096a (green line). The cells were fixed with 2% paraformaldehyde (10 min) and then permeabilized with 90% methanol for 10 min. The cells were then incubated in 2% bovine serum albumin to block non-specific protein-protein interactions followed by the antibody (AP22096a, 1:25 dilution) for 60 min at 37°C. The secondary antibody used was Goat-Anti-Rabbit IgG, DyLight® 488 Conjugated Highly Cross-Adsorbed(OH191631) at 1/200 dilution for 40 min at 37°C. Isotype control antibody (blue line) was rabbit IgG (1µg/1x10⁶ cells) used under the same conditions. Acquisition of >10, 000 events was performed.

SLC29A2 Antibody (N-Term) - Background

Mediates equilibrative transport of purine, pyrimidine nucleosides and the purine base hypoxanthine. Very less sensitive than SLC29A1 to inhibition by nitrobenzylthioinosine (NBMPR), dipyridamole, dilazep and draflazine.

SLC29A2 Antibody (N-Term) - References

Williams J.B.,et al.Biochem. Biophys. Res. Commun. 213:325-333(1995).
Griffiths M.,et al.Biochem. J. 328:739-743(1997).
Crawford C.R.,et al.J. Biol. Chem. 273:5288-5293(1998).
Mangravite L.M.,et al.Am. J. Physiol. 284:F902-F910(2003).
Ota T.,et al.Nat. Genet. 36:40-45(2004).