

RPS7 Antibody (N-Term)
Purified Rabbit Polyclonal Antibody (Pab)
Catalog # AP22077a

Specification

RPS7 Antibody (N-Term) - Product Information

Application	WB, FC,E
Primary Accession	P62081
Other Accession	A6H769 , P62084 , Q5RT64 , P62082 , P62083 , P50894 , P02362
Reactivity Predicted	Human, Mouse Bovine, Zebrafish, Rat, Xenopus
Host	Rabbit
Clonality	polyclonal
Isotype	Rabbit Ig
Calculated MW	22127

RPS7 Antibody (N-Term) - Additional Information

Gene ID 6201

Other Names

40S ribosomal protein S7, RPS7

Target/Specificity

This RPS7 antibody is generated from a rabbit immunized with a KLH conjugated synthetic peptide between 7-40 amino acids from human RPS7.

Dilution

WB~~1:2000

FC~~1:25

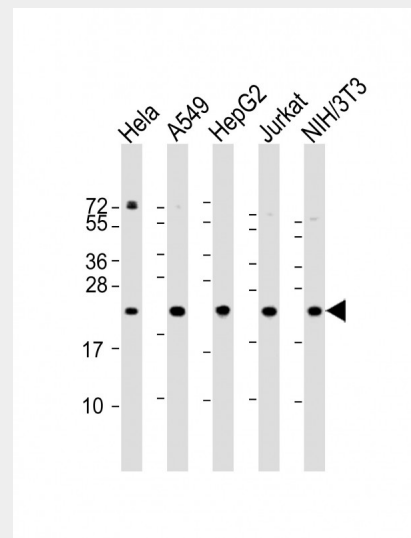
Format

Purified polyclonal antibody supplied in PBS with 0.09% (W/V) sodium azide. This antibody is purified through a protein A column, followed by peptide affinity purification.

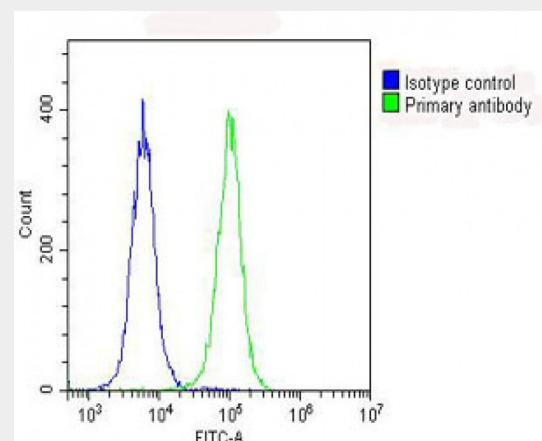
Storage

Maintain refrigerated at 2-8°C for up to 2 weeks. For long term storage store at -20°C in small aliquots to prevent freeze-thaw cycles.

Precautions



All lanes : Anti-RPS7 Antibody (N-Term) at 1:2000 dilution
Lane 1: HeLa whole cell lysate
Lane 2: A549 whole cell lysate
Lane 3: HepG2 whole cell lysate
Lane 4: Jurkat whole cell lysate
Lane 5: NIH/3T3 whole cell lysate
Lysates/proteins at 20 µg per lane.
Secondary Goat Anti-Rabbit IgG, (H+L), Peroxidase conjugated at 1/10000 dilution.
Predicted band size : 22 kDa
Blocking/Dilution buffer: 5% NFDM/TBST.



Overlay histogram showing HeLa cells stained with AP22077a (green line). The cells were fixed with 2% paraformaldehyde (10 min) and then permeabilized with 90%

RPS7 Antibody (N-Term) is for research use only and not for use in diagnostic or therapeutic procedures.

RPS7 Antibody (N-Term) - Protein Information

Name RPS7

Function

Required for rRNA maturation.

Cellular Location

Cytoplasm, cytoskeleton, microtubule organizing center, centrosome.

Note=Colocalizes with NEK6 in the centrosome.

RPS7 Antibody (N-Term) - Protocols

Provided below are standard protocols that you may find useful for product applications.

- [Western Blot](#)
- [Blocking Peptides](#)
- [Dot Blot](#)
- [Immunohistochemistry](#)
- [Immunofluorescence](#)
- [Immunoprecipitation](#)
- [Flow Cytometry](#)
- [Cell Culture](#)

methanol for 10 min. The cells were then incubated in 2% bovine serum albumin to block non-specific protein-protein interactions followed by the antibody (AP22077a, 1:25 dilution) for 60 min at 37°C. The secondary antibody used was Goat-Anti-Rabbit IgG, DyLight® 488 Conjugated Highly Cross-Adsorbed(OH191631) at 1/200 dilution for 40 min at 37°C. Isotype control antibody (blue line) was rabbit IgG (1µg/1x10⁶ cells) used under the same conditions. Acquisition of >10, 000 events was performed.

RPS7 Antibody (N-Term) - Background

Required for rRNA maturation.

RPS7 Antibody (N-Term) - References

Annilo T.,et al.Gene 165:297-302(1995).
Ota T.,et al.Nat. Genet. 36:40-45(2004).
Hillier L.W.,et al.Nature 434:724-731(2005).
Mural R.J.,et al.Submitted (SEP-2005) to the EMBL/GenBank/DDBJ databases.
Vladimirov S.N.,et al.Eur. J. Biochem. 239:144-149(1996).