

**NAT16 Antibody (N-Term)**  
**Purified Rabbit Polyclonal Antibody (Pab)**  
**Catalog # AP21997a**

**Specification**

**NAT16 Antibody (N-Term) - Product Information**

Application	<b>WB,E</b>
Primary Accession	<a href="#">Q8N8M0</a>
Reactivity	<b>Human</b>
Host	<b>Rabbit</b>
Clonality	<b>polyclonal</b>
Isotype	<b>Rabbit Ig</b>
Calculated MW	<b>40521</b>

**NAT16 Antibody (N-Term) - Additional Information**

**Gene ID** 375607

**Other Names**

Putative N-acetyltransferase 16, 2.3.1.-,  
NAT16, C7orf52

**Target/Specificity**

This NAT16 antibody is generated from a rabbit immunized with a KLH conjugated synthetic peptide between 12-46 amino acids from human NAT16.

**Dilution**

WB~~1:2000

**Format**

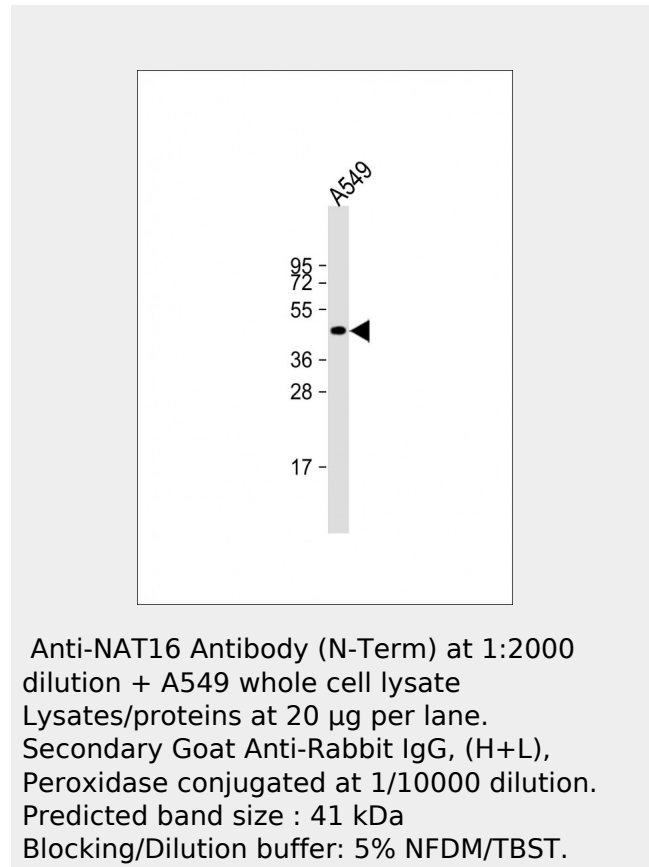
Purified polyclonal antibody supplied in PBS with 0.09% (W/V) sodium azide. This antibody is purified through a protein A column, followed by peptide affinity purification.

**Storage**

Maintain refrigerated at 2-8°C for up to 2 weeks. For long term storage store at -20°C in small aliquots to prevent freeze-thaw cycles.

**Precautions**

NAT16 Antibody (N-Term) is for research use only and not for use in diagnostic or therapeutic procedures.



**NAT16 Antibody (N-Term) - References**

- Ota T.,et al.Nat. Genet. 36:40-45(2004).
- Hillier L.W.,et al.Nature 424:157-164(2003).
- Bechtel S.,et al.BMC Genomics 8:399-399(2007).

**NAT16 Antibody (N-Term) - Protein Information**

**Name** NAT16

**Synonyms** C7orf52

**Function**

Probable N-acetyltransferase. Shows only trace activity toward L-His and no N-acetyltransferase activity toward other amino acids. The physiological substrate of this enzyme is unknown.

**NAT16 Antibody (N-Term) - Protocols**

Provided below are standard protocols that you may find useful for product applications.

- [Western Blot](#)
- [Blocking Peptides](#)
- [Dot Blot](#)
- [Immunohistochemistry](#)
- [Immunofluorescence](#)
- [Immunoprecipitation](#)
- [Flow Cytometry](#)
- [Cell Culture](#)