

SCGB2A2 Antibody (N-Term)
Purified Rabbit Polyclonal Antibody (Pab)
Catalog # AP21959a**Specification****SCGB2A2 Antibody (N-Term) - Product Information**

Application	WB,E
Primary Accession	Q13296
Reactivity	Human
Host	Rabbit
Clonality	polyclonal
Isotype	Rabbit Ig
Calculated MW	10499

SCGB2A2 Antibody (N-Term) - Additional Information

Gene ID 4250

Other NamesMammaglobin-A, Mammaglobin-1,
Secretoglobin family 2A member 2,
SCGB2A2, MGB1, UGB2**Target/Specificity**

This SCGB2A2 antibody is generated from a rabbit immunized with a KLH conjugated synthetic peptide between 22-51 amino acids from human SCGB2A2.

Dilution

WB~~1:2000

Format

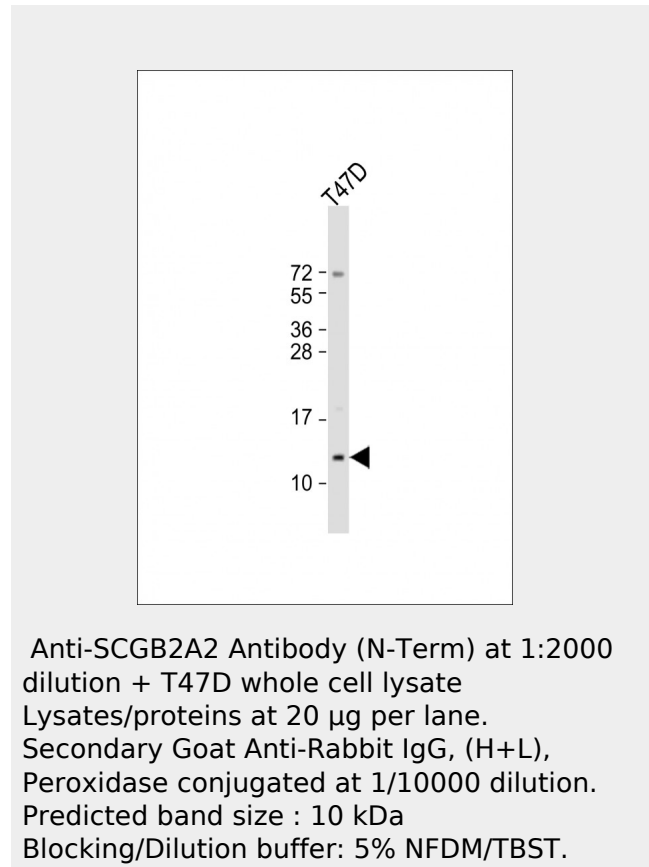
Purified polyclonal antibody supplied in PBS with 0.09% (W/V) sodium azide. This antibody is purified through a protein A column, followed by peptide affinity purification.

Storage

Maintain refrigerated at 2-8°C for up to 2 weeks. For long term storage store at -20°C in small aliquots to prevent freeze-thaw cycles.

Precautions

SCGB2A2 Antibody (N-Term) is for research use only and not for use in diagnostic or therapeutic procedures.

**SCGB2A2 Antibody (N-Term) - References**

- Watson M.A., et al. Cancer Res. 56:860-865(1996).
Watson M.A., et al. Oncogene 16:817-824(1998).
Zhao L., et al. Submitted (JAN-2003) to the EMBL/GenBank/DDBJ databases.

SCGB2A2 Antibody (N-Term) - Protein Information

Name SCGB2A2

Synonyms MGB1, UGB2

Cellular Location

Secreted.

Tissue Location

Mammary gland specific. Over-expressed in breast cancer

SCGB2A2 Antibody (N-Term) - Protocols

Provided below are standard protocols that you may find useful for product applications.

- [Western Blot](#)
- [Blocking Peptides](#)
- [Dot Blot](#)
- [Immunohistochemistry](#)
- [Immunofluorescence](#)
- [Immunoprecipitation](#)
- [Flow Cytometry](#)
- [Cell Culture](#)