

**INTS6 Antibody (N-Term)**  
**Purified Rabbit Polyclonal Antibody (Pab)**  
**Catalog # AP21956a**

**Specification**

**INTS6 Antibody (N-Term) - Product Information**

Application	<b>WB,E</b>
Primary Accession	<a href="#">Q9UL03</a>
Other Accession	<a href="#">Q5JSJ4</a> , <a href="#">Q8BND4</a> , <a href="#">Q2TAF4</a> , <a href="#">Q5U4W6</a> , <a href="#">Q7SYD9</a> , <a href="#">Q6PCM2</a>
Reactivity Predicted	<b>Human</b> <b>Xenopus, Mouse,</b> <b>Zebrafish</b>
Host	<b>Rabbit</b>
Clonality	<b>polyclonal</b>
Isotype	<b>IgG1,K</b>

**INTS6 Antibody (N-Term) - Additional Information**

**Gene ID** 26512

**Other Names**

Integrator complex subunit 6, Int6, DBI-1, Protein DDX26, Protein deleted in cancer 1, DICE1, INTS6, DBI1, DDX26, DDX26A

**Target/Specificity**

This INTS6 antibody is generated from a rabbit immunized with a KLH conjugated synthetic peptide between 135-167 amino acids from human INTS6.

**Dilution**

WB~~1:2000

**Format**

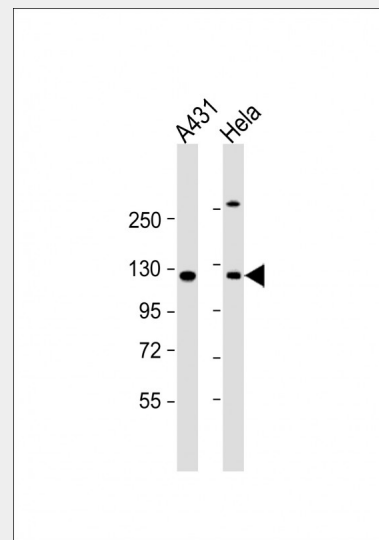
Purified polyclonal antibody supplied in PBS with 0.09% (W/V) sodium azide. This antibody is purified through a protein A column, followed by peptide affinity purification.

**Storage**

Maintain refrigerated at 2-8°C for up to 2 weeks. For long term storage store at -20°C in small aliquots to prevent freeze-thaw cycles.

**Precautions**

INTS6 Antibody (N-Term) is for research use



All lanes : Anti-INTS6 Antibody (N-Term) at 1:2000 dilution Lane 1: A431 whole cell lysate Lane 2: HeLa whole cell lysate Lysates/proteins at 20 µg per lane. Secondary Goat Anti-Rabbit IgG, (H+L), Peroxidase conjugated at 1/10000 dilution. Predicted band size : 100 kDa Blocking/Dilution buffer: 5% NFDM/TBST.

**INTS6 Antibody (N-Term) - Background**

Component of the Integrator complex, a complex involved in the small nuclear RNAs (snRNA) U1 and U2 transcription and in their 3'-box-dependent processing. The Integrator complex is associated with the C-terminal domain (CTD) of RNA polymerase II largest subunit (POLR2A) and is recruited to the U1 and U2 snRNAs genes. May have a tumor suppressor role; an ectopic expression suppressing tumor cell growth.

**INTS6 Antibody (N-Term) - References**

Wieland I.,et al.Oncogene 18:4530-4537(1999).  
Bechtel S.,et al.BMC Genomics 8:399-399(2007).

only and not for use in diagnostic or therapeutic procedures.

Dunham A.,et al.Nature 428:522-528(2004).  
Hoff H.B. III,et al.Submitted (APR-1999) to the EMBL/GenBank/DDBJ databases.  
Wieland I.,et al.Oncol. Res. 12:491-500(2001).

#### **INTS6 Antibody (N-Term) - Protein Information**

**Name** INTS6

**Synonyms** DBI1, DDX26, DDX26A

#### **Function**

Component of the Integrator (INT) complex, a complex involved in the small nuclear RNAs (snRNA) U1 and U2 transcription and in their 3'-box-dependent processing. The Integrator complex is associated with the C-terminal domain (CTD) of RNA polymerase II largest subunit (POLR2A) and is recruited to the U1 and U2 snRNAs genes (Probable). Mediates recruitment of cytoplasmic dynein to the nuclear envelope, probably as component of the INT complex (PubMed:<a href="http://www.uniprot.org/citations/23904267" target="\_blank">23904267</a>). May have a tumor suppressor role; an ectopic expression suppressing tumor cell growth (PubMed:<a href="http://www.uniprot.org/citations/15254679" target="\_blank">15254679</a>, PubMed:<a href="http://www.uniprot.org/citations/16239144" target="\_blank">16239144</a>).

#### **Cellular Location**

Nucleus

#### **Tissue Location**

Widely expressed. Expressed in heart, brain, placenta, lung, liver, skeletal muscle, kidney and pancreas

#### **INTS6 Antibody (N-Term) - Protocols**

Provided below are standard protocols that you may find useful for product applications.

- [Western Blot](#)
- [Blocking Peptides](#)
- [Dot Blot](#)
- [Immunohistochemistry](#)
- [Immunofluorescence](#)
- [Immunoprecipitation](#)
- [Flow Cytometry](#)

- [Cell Culture](#)