

FBXO32 Antibody (N-Term)
Purified Rabbit Polyclonal Antibody (Pab)
Catalog # AP21940a

Specification

FBXO32 Antibody (N-Term) - Product Information

Application	WB,E
Primary Accession	Q969P5
Other Accession	Q2KHT6 , Q9CPU7 , Q1A730 , Q91Z62
Reactivity Predicted	Human Bovine, Mouse, Pig, Rat
Host	Rabbit
Clonality	polyclonal
Isotype	IgG1
Calculated MW	41637

FBXO32 Antibody (N-Term) - Additional Information

Gene ID 114907

Other Names

F-box only protein 32, Atrogin-1, Muscle atrophy F-box protein, MAFbx, FBXO32

Target/Specificity

This FBXO32 antibody is generated from a rabbit immunized with a KLH conjugated synthetic peptide between 17-49 amino acids from human FBXO32.

Dilution

WB~~1:2000

Format

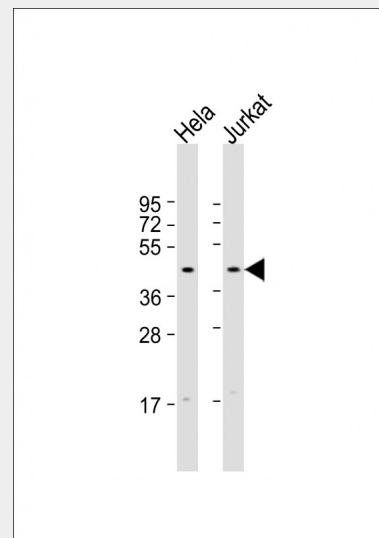
Purified polyclonal antibody supplied in PBS with 0.09% (W/V) sodium azide. This antibody is purified through a protein A column, followed by peptide affinity purification.

Storage

Maintain refrigerated at 2-8°C for up to 2 weeks. For long term storage store at -20°C in small aliquots to prevent freeze-thaw cycles.

Precautions

FBXO32 Antibody (N-Term) is for research



All lanes : Anti-FBXO32 Antibody (N-Term) at 1:2000 dilution
Lane 1: HeLa whole cell lysate
Lane 2: Jurkat whole cell lysate
Lysates/proteins at 20 µg per lane.
Secondary Goat Anti-Rabbit IgG, (H+L), Peroxidase conjugated at 1/10000 dilution.
Predicted band size : 42 kDa
Blocking/Dilution buffer: 5% NFDM/TBST.

FBXO32 Antibody (N-Term) - Background

Substrate recognition component of a SCF (SKP1-CUL1-F-box protein) E3 ubiquitin-protein ligase complex which mediates the ubiquitination and subsequent proteasomal degradation of target proteins. Probably recognizes and binds to phosphorylated target proteins during skeletal muscle atrophy. Recognizes TERF1.

FBXO32 Antibody (N-Term) - References

- Bodine S.C., et al. Science 294:1704-1708(2001).
- Sivertsen E.A., et al. Submitted (NOV-2001) to the EMBL/GenBank/DDBJ databases.
- Pescatori M., et al. Submitted (NOV-2006) to the EMBL/GenBank/DDBJ databases.

use only and not for use in diagnostic or therapeutic procedures.

Ota T.,et al.Nat. Genet. 36:40-45(2004).
Nusbaum C.,et al.Nature 439:331-335(2006).

FBXO32 Antibody (N-Term) - Protein Information

Name FBXO32

Function

Substrate recognition component of a SCF (SKP1-CUL1-F-box protein) E3 ubiquitin-protein ligase complex which mediates the ubiquitination and subsequent proteasomal degradation of target proteins. Probably recognizes and binds to phosphorylated target proteins during skeletal muscle atrophy. Recognizes TERF1.

Cellular Location

Cytoplasm. Nucleus Note=Shuttles between cytoplasm and the nucleus

Tissue Location

Specifically expressed in cardiac and skeletal muscle

FBXO32 Antibody (N-Term) - Protocols

Provided below are standard protocols that you may find useful for product applications.

- [Western Blot](#)
- [Blocking Peptides](#)
- [Dot Blot](#)
- [Immunohistochemistry](#)
- [Immunofluorescence](#)
- [Immunoprecipitation](#)
- [Flow Cytometry](#)
- [Cell Culture](#)