

MPP2 Antibody (C-Term)
Purified Rabbit Polyclonal Antibody (Pab)
Catalog # AP21878b

Specification

MPP2 Antibody (C-Term) - Product Information

Application	WB,E
Primary Accession	Q14168
Other Accession	Q9WV34 , D3ZAA9
Reactivity	Mouse
Predicted	Rat
Host	Rabbit
Clonality	polyclonal
Isotype	Rabbit Ig
Calculated MW	64581

MPP2 Antibody (C-Term) - Additional Information

Gene ID 4355

Other Names

MAGUK p55 subfamily member 2, Discs large homolog 2, Protein MPP2, MPP2, DLG2

Target/Specificity

This MPP2 antibody is generated from a rabbit immunized with a KLH conjugated synthetic peptide between 398-419 amino acids from human MPP2.

Dilution

WB~~1:2000

Format

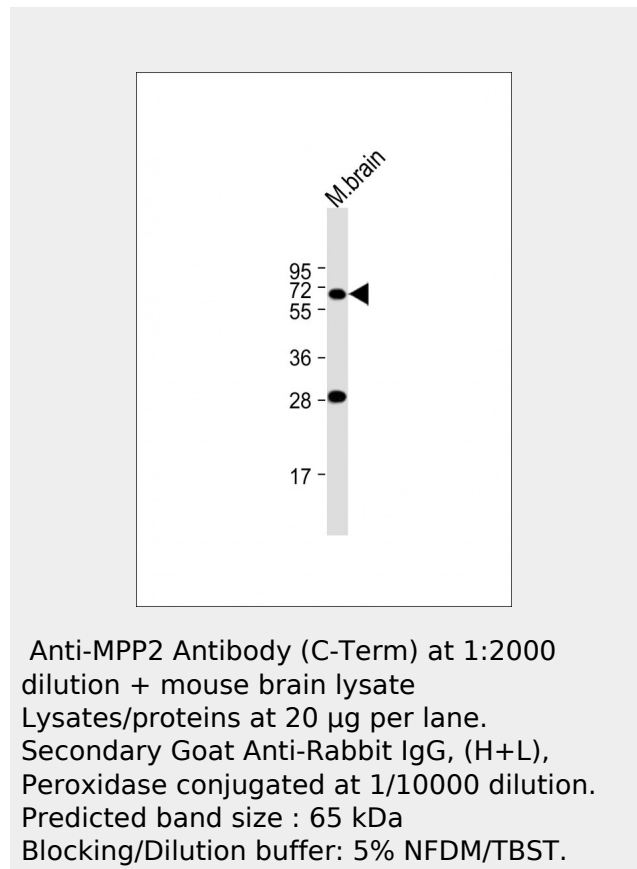
Purified polyclonal antibody supplied in PBS with 0.09% (W/V) sodium azide. This antibody is purified through a protein A column, followed by peptide affinity purification.

Storage

Maintain refrigerated at 2-8°C for up to 2 weeks. For long term storage store at -20°C in small aliquots to prevent freeze-thaw cycles.

Precautions

MPP2 Antibody (C-Term) is for research use only and not for use in diagnostic or therapeutic procedures.



MPP2 Antibody (C-Term) - References

- Mazoyer S.,et al.Genomics 28:25-31(1995).
- Wiemann S.,et al.Genome Res. 11:422-435(2001).
- Ota T.,et al.Nat. Genet. 36:40-45(2004).
- Bechtel S.,et al.BMC Genomics 8:399-399(2007).
- Totoki Y.,et al.Submitted (APR-2005) to the EMBL/GenBank/DDBJ databases.

MPP2 Antibody (C-Term) - Protein Information

Name MPP2 ([HGNC:7220](#))

Synonyms DLG2

Function

Postsynaptic MAGUK scaffold protein that links CADM1 cell adhesion molecules to core components of the postsynaptic density (By similarity). In CA1 pyramidal neurons, required for synaptic KCNN2-containing channel function and long-term potentiation expression (By similarity). Seems to negatively regulate SRC function in epithelial cells (PubMed:19665017).

Cellular Location

Cytoplasm, cytoskeleton. Membrane Cell projection, dendrite
{ECO:0000250|UniProtKB:Q9WV34}. Cell junction, synapse, postsynaptic density
{ECO:0000250|UniProtKB:Q9WV34}
Note=Prominently expressed in the postsynaptic densities of dendritic spines, is also detected in dendritic shafts
{ECO:0000250|UniProtKB:Q9WV34}

MPP2 Antibody (C-Term) - Protocols

Provided below are standard protocols that you may find useful for product applications.

- [Western Blot](#)
- [Blocking Peptides](#)
- [Dot Blot](#)
- [Immunohistochemistry](#)
- [Immunofluorescence](#)
- [Immunoprecipitation](#)
- [Flow Cytometry](#)
- [Cell Culture](#)