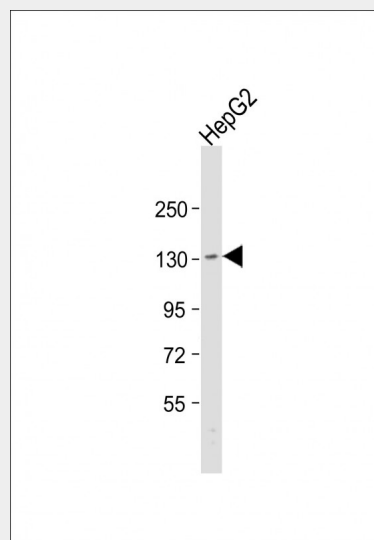


**TMF1 Antibody (Center)**  
**Purified Rabbit Polyclonal Antibody (Pab)**  
Catalog # AP21851c**Specification****TMF1 Antibody (Center) - Product Information**

Application	WB,E
Primary Accession	<a href="#">P82094</a>
Reactivity	Human
Host	Rabbit
Clonality	polyclonal
Isotype	Rabbit Ig
Calculated MW	122842

**TMF1 Antibody (Center) - Additional Information****Gene ID** 7110**Other Names**TATA element modulatory factor, TMF,  
Androgen receptor coactivator 160 kDa  
protein, Androgen receptor-associated  
protein of 160 kDa, TMF1, ARA160**Target/Specificity**This TMF1 antibody is generated from a  
rabbit immunized with a KLH conjugated  
synthetic peptide between 447-480 amino  
acids from the Central region of human  
TMF1.**Dilution**

WB~~1:1000

**Format**Purified polyclonal antibody supplied in PBS  
with 0.09% (W/V) sodium azide. This  
antibody is purified through a protein A  
column, followed by peptide affinity  
purification.**Storage**Maintain refrigerated at 2-8°C for up to 2  
weeks. For long term storage store at -20°C  
in small aliquots to prevent freeze-thaw  
cycles.**Precautions**TMF1 Antibody (Center) is for research use  
only and not for use in diagnostic or  
therapeutic procedures.

Anti-TMF1 Antibody (Center) at 1:1000  
dilution + HepG2 whole cell lysate  
Lysates/proteins at 20 µg per lane.  
Secondary Goat Anti-Rabbit IgG, (H+L),  
Peroxidase conjugated at 1/10000 dilution.  
Predicted band size : 123 kDa  
Blocking/Dilution buffer: 5% NFDM/TBST.

**TMF1 Antibody (Center) - Background**Potential coactivator of the androgen  
receptor. Mediates STAT3 degradation. May  
play critical roles in two RAB6-dependent  
retrograde transport processes: one from  
endosomes to the Golgi and the other from the  
Golgi to the ER. This protein binds the HIV-1  
TATA element and inhibits transcriptional  
activation by the TATA-binding protein (TBP).**TMF1 Antibody (Center) - References**

Garcia J.A.,et al.Proc. Natl. Acad. Sci. U.S.A.  
89:9372-9376(1992).  
Hsiao P.W.,et al.J. Biol. Chem.  
274:22373-22379(1999).  
Totoki Y.,et al.Submitted (MAR-2005) to the  
EMBL/GenBank/DDBJ databases.  
Muzny D.M.,et al.Nature 440:1194-1198(2006).

**TMF1 Antibody (Center) - Protein Information**

Mural R.J., et al. Submitted (JUL-2005) to the EMBL/GenBank/DDBJ databases.

**Name** TMF1

**Synonyms** ARA160

**Function**

Potential coactivator of the androgen receptor. Mediates STAT3 degradation. May play critical roles in two RAB6-dependent retrograde transport processes: one from endosomes to the Golgi and the other from the Golgi to the ER. This protein binds the HIV-1 TATA element and inhibits transcriptional activation by the TATA-binding protein (TBP).

**Cellular Location**

Cytoplasm. Nucleus. Golgi apparatus membrane. Note=Concentrated at the budding structures localized at the tips of cisternae

**TMF1 Antibody (Center) - Protocols**

Provided below are standard protocols that you may find useful for product applications.

- [Western Blot](#)
- [Blocking Peptides](#)
- [Dot Blot](#)
- [Immunohistochemistry](#)
- [Immunofluorescence](#)
- [Immunoprecipitation](#)
- [Flow Cytometry](#)
- [Cell Culture](#)