

DPEP2 Antibody (Center)
Purified Rabbit Polyclonal Antibody (Pab)
Catalog # AP21755c

Specification

DPEP2 Antibody (Center) - Product Information

Application	WB,E
Primary Accession	O9H4A9
Reactivity	Mouse
Host	Rabbit
Clonality	polyclonal
Isotype	Rabbit Ig

DPEP2 Antibody (Center) - Additional Information

Gene ID 64174

Other Names
Dipeptidase 2, DPEP2

Target/Specificity

This DPEP2 antibody is generated from a rabbit immunized with a KLH conjugated synthetic peptide between 220-254 amino acids from the Central region of human DPEP2.

Dilution

WB~~1:2000

Format

Purified polyclonal antibody supplied in PBS with 0.09% (W/V) sodium azide. This antibody is purified through a protein A column, followed by peptide affinity purification.

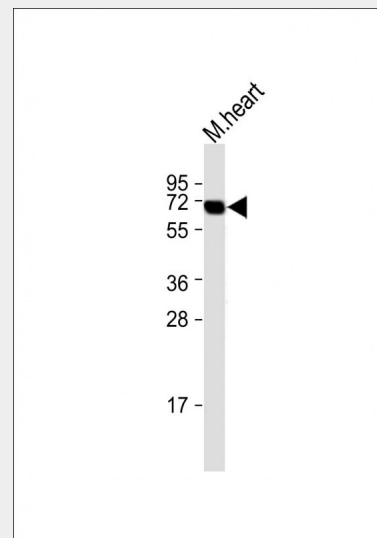
Storage

Maintain refrigerated at 2-8°C for up to 2 weeks. For long term storage store at -20°C in small aliquots to prevent freeze-thaw cycles.

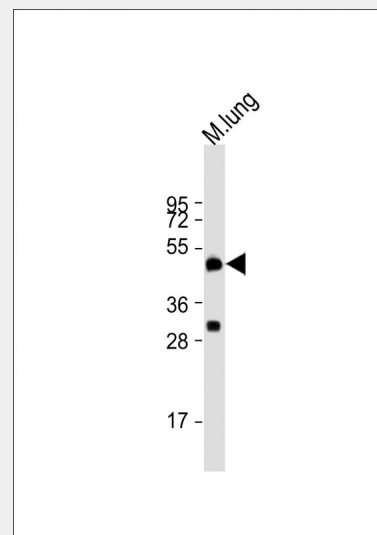
Precautions

DPEP2 Antibody (Center) is for research use only and not for use in diagnostic or therapeutic procedures.

DPEP2 Antibody (Center) - Protein Information



All lanes : Anti-DPEP2 Antibody (Center) at 1:1000 dilution Lane 1: mouse heart lysate Lysates/proteins at 20 µg per lane. Secondary Goat Anti-Rabbit IgG, (H+L), Peroxidase conjugated at 1/10000 dilution. Observed band size : 70 kDa Blocking/Dilution buffer: 5% NFDm/TBST.



Anti-DPEP2 Antibody (Center) at 1:2000 dilution + mouse lung lysate Lysates/proteins at 20 µg per lane. Secondary Goat Anti-Rabbit IgG, (H+L), Peroxidase

Name DPEP2

Function

Dipeptidase that hydrolyzes leukotriene D4 (LTD4) into leukotriene E4 (LTE4). Does not hydrolyze cystinyl-bis-glycine.

Cellular Location

Membrane

{ECO:0000250|UniProtKB:Q8C255}; Lipid-
anchor, GPI-anchor

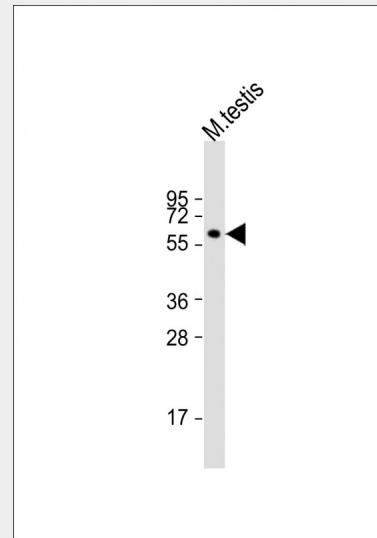
{ECO:0000250|UniProtKB:Q8C255}

DPEP2 Antibody (Center) - Protocols

Provided below are standard protocols that you may find useful for product applications.

- [Western Blot](#)
- [Blocking Peptides](#)
- [Dot Blot](#)
- [Immunohistochemistry](#)
- [Immunofluorescence](#)
- [Immunoprecipitation](#)
- [Flow Cytometry](#)
- [Cell Culture](#)

conjugated at 1/10000 dilution. Predicted band size : 53 kDa Blocking/Dilution buffer: 5% NFDM/TBST.



Anti-DPEP2 Antibody (Center) at 1:2000 dilution + mouse testis lysate
Lysates/proteins at 20 µg per lane.
Secondary Goat Anti-Rabbit IgG, (H+L),
Peroxidase conjugated at 1/10000 dilution.
Predicted band size : 53 kDa
Blocking/Dilution buffer: 5% NFDM/TBST.

DPEP2 Antibody (Center) - Background

Probable metalloprotease which hydrolyzes leukotriene D4 (LTD4) into leukotriene E4 (LTE4).

DPEP2 Antibody (Center) - References

Chen J.M.,et al.Submitted (OCT-2000) to the EMBL/GenBank/DDBJ databases.
Ota T.,et al.Nat. Genet. 36:40-45(2004).
Martin J.,et al.Nature 432:988-994(2004).
Mural R.J.,et al.Submitted (JUL-2005) to the EMBL/GenBank/DDBJ databases.
Clark H.F.,et al.Genome Res. 13:2265-2270(2003).