

SHOX Antibody (N-term)
Purified Rabbit Polyclonal Antibody (Pab)
Catalog # AP21698a

Specification

SHOX Antibody (N-term) - Product Information

Application	WB,E
Primary Accession	O15266
Reactivity	Human
Host	Rabbit
Clonality	polyclonal
Isotype	Rabbit Ig
Calculated MW	32236

SHOX Antibody (N-term) - Additional Information

Gene ID 6473

Other Names

Short stature homeobox protein,
Pseudoautosomal homeobox-containing
osteogenic protein, Short stature
homeobox-containing protein, SHOX, PHOG

Target/Specificity

This SHOX antibody is generated from a rabbit immunized with a KLH conjugated synthetic peptide between 4-38 amino acids from the N-terminal region of human SHOX.

Dilution

WB~~1:2000

Format

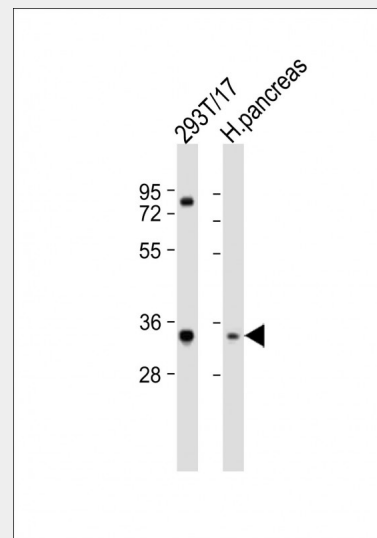
Purified polyclonal antibody supplied in PBS with 0.09% (W/V) sodium azide. This antibody is purified through a protein A column, followed by peptide affinity purification.

Storage

Maintain refrigerated at 2-8°C for up to 2 weeks. For long term storage store at -20°C in small aliquots to prevent freeze-thaw cycles.

Precautions

SHOX Antibody (N-term) is for research use only and not for use in diagnostic or therapeutic procedures.



All lanes : Anti-SHOX Antibody (N-term) at 1:2000 dilution Lane 1: 293T/17 whole cell lysate Lane 2: human pancreas lysate Lysates/proteins at 20 µg per lane. Secondary Goat Anti-Rabbit IgG, (H+L), Peroxidase conjugated at 1/10000 dilution. Predicted band size : 32 kDa Blocking/Dilution buffer: 5% NFDM/TBST.

SHOX Antibody (N-term) - Background

Controls fundamental aspects of growth and development.

SHOX Antibody (N-term) - References

- Rao E.,et al.Nat. Genet. 16:54-63(1997).
- Ellison J.W.,et al.Hum. Mol. Genet. 6:1341-1347(1997).
- Ross M.T.,et al.Nature 434:325-337(2005).
- Grigelioniene G.,et al.Hum. Genet. 107:145-149(2000).
- Cormier-Daire V.,et al.Am. J. Med. Genet. 106:272-274(2001).

SHOX Antibody (N-term) - Protein Information**Name** SHOX**Synonyms** PHOG**Function**

Controls fundamental aspects of growth and development.

Cellular Location

Nucleus

{ECO:0000255|PROSITE-ProRule:PRU00108,
ECO:0000255|PROSITE-ProRule:PRU00138}

Tissue Location

SHOXA is expressed in skeletal muscle, placenta, pancreas, heart and bone marrow fibroblast and SHOXB is highly expressed in bone marrow fibroblast followed by kidney and skeletal muscle. SHOXB is not expressed in brain, kidney, liver and lung. Highly expressed in osteogenic cells

SHOX Antibody (N-term) - Protocols

Provided below are standard protocols that you may find useful for product applications.

- [Western Blot](#)
- [Blocking Peptides](#)
- [Dot Blot](#)
- [Immunohistochemistry](#)
- [Immunofluorescence](#)
- [Immunoprecipitation](#)
- [Flow Cytometry](#)
- [Cell Culture](#)