

SPPL2B Antibody (N-Term)
Purified Rabbit Polyclonal Antibody (Pab)
Catalog # AP21660a

Specification

SPPL2B Antibody (N-Term) - Product Information

Application	WB,E
Primary Accession	Q8TCT7
Reactivity	Human
Host	Rabbit
Clonality	polyclonal
Isotype	Rabbit Ig
Calculated MW	64644

SPPL2B Antibody (N-Term) - Additional Information

Gene ID 56928

Other Names

Signal peptide peptidase-like 2B, SPP-like 2B, SPPL2b, 3423-, Intramembrane protease 4, IMP-4, Presenilin homologous protein 4, PSH4, Presenilin-like protein 1, SPPL2B, IMP4, KIAA1532, PSL1

Target/Specificity

This SPPL2B antibody is generated from a rabbit immunized with a KLH conjugated synthetic peptide between 126-160 amino acids from human SPPL2B.

Dilution

WB~~1:2000

Format

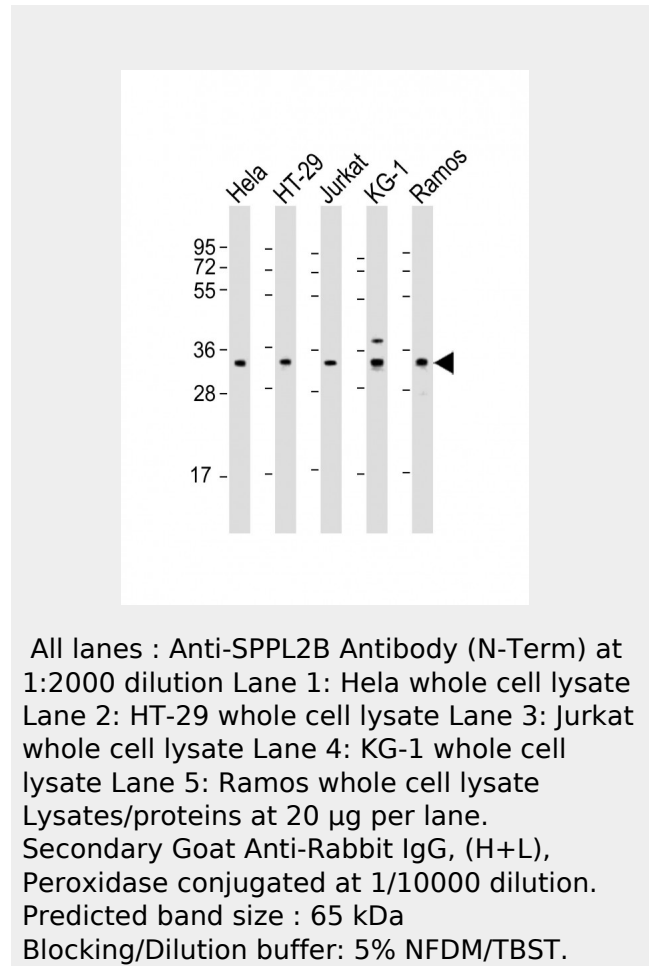
Purified polyclonal antibody supplied in PBS with 0.09% (W/V) sodium azide. This antibody is purified through a protein A column, followed by peptide affinity purification.

Storage

Maintain refrigerated at 2-8°C for up to 2 weeks. For long term storage store at -20°C in small aliquots to prevent freeze-thaw cycles.

Precautions

SPPL2B Antibody (N-Term) is for research use only and not for use in diagnostic or



SPPL2B Antibody (N-Term) - Background

Intramembrane-cleaving aspartic protease (I-CLiP) that cleaves type II membrane signal peptides in the hydrophobic plane of the membrane. Functions in ITM2B and TNF processing. Catalyzes the intramembrane cleavage of the anchored fragment of shed TNF- alpha (TNF), which promotes the release of the intracellular domain (ICD) for signaling to the nucleus. May play a role in the regulation of innate and adaptive immunity.

SPPL2B Antibody (N-Term) - References

Irmler M.,et al.Submitted (SEP-2001) to the EMBL/GenBank/DDBJ databases.

therapeutic procedures.

SPPL2B Antibody (N-Term) - Protein Information

Name SPPL2B

{ECO:0000303|PubMed:15385547,
ECO:0000312|HGNC:HGNC:30627}

Function

Intramembrane-cleaving aspartic protease (I-CLiP) that cleaves type II membrane signal peptides in the hydrophobic plane of the membrane. Functions in ITM2B and TNF processing (PubMed:16829952, PubMed:16829951, PubMed:17965014, PubMed:19114711, PubMed:22194595). Catalyzes the intramembrane cleavage of the anchored fragment of shed TNF-alpha (TNF), which promotes the release of the intracellular domain (ICD) for signaling to the nucleus (PubMed:16829952, PubMed:16829951). May play a role in the regulation of innate and adaptive immunity (PubMed:16829952). Catalyzes the intramembrane cleavage of the simian foamy virus processed leader peptide gp18 of the envelope glycoprotein gp130 dependently of prior ectodomain shedding by furin or furin-like proprotein convertase (PC)-mediated cleavage proteolysis (PubMed:23132852).

Cellular Location

Cell membrane; Multi-pass membrane protein. Golgi apparatus membrane; Multi-pass membrane protein. Lysosome

Martoglio B.,et al.Submitted (NOV-2001) to the EMBL/GenBank/DDBJ databases.

Grigorenko A.P.,et al.Biochemistry (Mosc.) 67:826-834(2002).

Nagase T.,et al.DNA Res. 7:143-150(2000).

Grimwood J.,et al.Nature 428:529-535(2004).

membrane; Multi-pass membrane protein.
Endosome membrane; Multi-pass
membrane protein. Membrane; Multi-pass
membrane protein; Luminal side.
Note=targeted through the entire secretory
pathway to endosomes/lysosomes
(PubMed:15998642)

Tissue Location

Expressed predominantly in adrenal cortex
and mammary gland.

SPPL2B Antibody (N-Term) - Protocols

Provided below are standard protocols that you
may find useful for product applications.

- [Western Blot](#)
- [Blocking Peptides](#)
- [Dot Blot](#)
- [Immunohistochemistry](#)
- [Immunofluorescence](#)
- [Immunoprecipitation](#)
- [Flow Cytometry](#)
- [Cell Culture](#)