

C1orf201 Antibody (N-term)
Purified Rabbit Polyclonal Antibody (Pab)
Catalog # AP21645a

Specification

C1orf201 Antibody (N-term) - Product Information

Application	WB,E
Primary Accession	Q5TH74
Reactivity	Human
Host	Rabbit
Clonality	polyclonal
Isotype	Rabbit Ig
Calculated MW	36786

C1orf201 Antibody (N-term) - Additional Information

Gene ID 90529

Other Names

O(6)-methylguanine-induced apoptosis 2, MAPO2, Sperm-tail PG-rich repeat-containing protein 1, STPG1, C1orf201

Target/Specificity

This C1orf201 antibody is generated from a rabbit immunized with a KLH conjugated synthetic peptide between 37-70 amino acids from the N-terminal region of human C1orf201.

Dilution

WB~~1:2000

Format

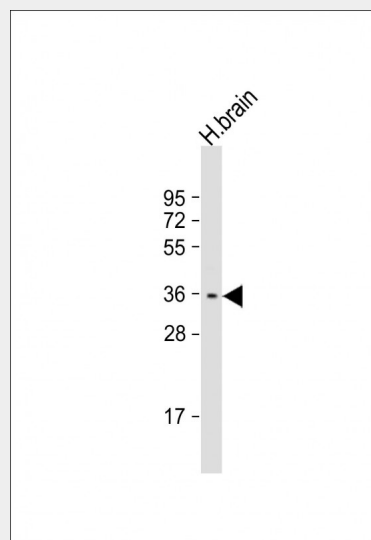
Purified polyclonal antibody supplied in PBS with 0.09% (W/V) sodium azide. This antibody is purified through a protein A column, followed by peptide affinity purification.

Storage

Maintain refrigerated at 2-8°C for up to 2 weeks. For long term storage store at -20°C in small aliquots to prevent freeze-thaw cycles.

Precautions

C1orf201 Antibody (N-term) is for research



Anti-C1orf201 Antibody (N-term) at 1:2000 dilution + human brain lysate
Lysates/proteins at 20 µg per lane.
Secondary Goat Anti-Rabbit IgG, (H+L), Peroxidase conjugated at 1/10000 dilution.
Predicted band size : 37 kDa
Blocking/Dilution buffer: 5% NFDM/TBST.

C1orf201 Antibody (N-term) - Background

May positively contribute to the induction of apoptosis triggered by O(6)-methylguanine.

C1orf201 Antibody (N-term) - References

Gregory S.G.,et al.Nature 441:315-321(2006).
Mayya V.,et al.Sci. Signal. 2:RA46-RA46(2009).
Fujikane R.,et al.PLoS ONE 7:E44817-E44817(2012).
Sjoeblohm T.,et al.Science 314:268-274(2006).

use only and not for use in diagnostic or therapeutic procedures.

C1orf201 Antibody (N-term) - Protein Information

Name STPG1

Synonyms C1orf201

Function

May positively contribute to the induction of apoptosis triggered by O(6)-methylguanine.

Cellular Location

Cytoplasm. Nucleus.

C1orf201 Antibody (N-term) - Protocols

Provided below are standard protocols that you may find useful for product applications.

- [Western Blot](#)
- [Blocking Peptides](#)
- [Dot Blot](#)
- [Immunohistochemistry](#)
- [Immunofluorescence](#)
- [Immunoprecipitation](#)
- [Flow Cytometry](#)
- [Cell Culture](#)