

MYH6 Antibody (Center)
Purified Rabbit Polyclonal Antibody (Pab)
Catalog # AP21625c

Specification

MYH6 Antibody (Center) - Product Information

Application	WB,E
Primary Accession	P13533
Reactivity	Human, Mouse
Host	Rabbit
Clonality	polyclonal
Isotype	Rabbit Ig
Calculated MW	223735

MYH6 Antibody (Center) - Additional Information

Gene ID 4624

Other Names

Myosin-6, Myosin heavy chain 6, Myosin heavy chain, cardiac muscle alpha isoform, MyHC-alpha, MYH6, MYHCA

Target/Specificity

This MYH6 antibody is generated from a rabbit immunized with a KLH conjugated synthetic peptide between 833-867 amino acids from the Central region of human MYH6.

Dilution

WB~~1:2000

Format

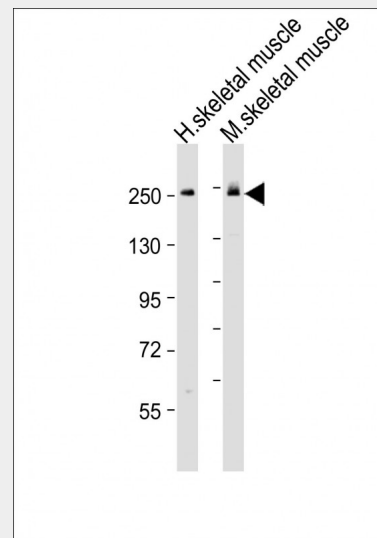
Purified polyclonal antibody supplied in PBS with 0.09% (W/V) sodium azide. This antibody is purified through a protein A column, followed by peptide affinity purification.

Storage

Maintain refrigerated at 2-8°C for up to 2 weeks. For long term storage store at -20°C in small aliquots to prevent freeze-thaw cycles.

Precautions

MYH6 Antibody (Center) is for research use only and not for use in diagnostic or therapeutic procedures.



All lanes : Anti-MYH6 Antibody (Center) at 1:2000 dilution Lane 1: human skeletal muscle lysate Lane 2: mouse skeletal muscle lysate Lysates/proteins at 20 µg per lane. Secondary Goat Anti-Rabbit IgG, (H+L), Peroxidase conjugated at 1/10000 dilution. Predicted band size : 224 kDa Blocking/Dilution buffer: 5% NFDM/TBST.

MYH6 Antibody (Center) - Background

Muscle contraction.

MYH6 Antibody (Center) - References

- Matsuoka R.,et al.Am. J. Med. Genet. 41:537-547(1991).
- Epp T.A.,et al.Genomics 18:505-509(1993).
- Heilig R.,et al.Nature 421:601-607(2003).
- Mural R.J.,et al.Submitted (SEP-2005) to the EMBL/GenBank/DDBJ databases.
- Yamauchi-Takahara K.,et al.Proc. Natl. Acad. Sci. U.S.A. 86:3504-3508(1989).

MYH6 Antibody (Center) - Protein Information

Name MYH6

Synonyms MYHCA

Function

Muscle contraction.

Cellular Location

Cytoplasm, myofibril. Note=Thick filaments of the myofibrils

MYH6 Antibody (Center) - Protocols

Provided below are standard protocols that you may find useful for product applications.

- [Western Blot](#)
- [Blocking Peptides](#)
- [Dot Blot](#)
- [Immunohistochemistry](#)
- [Immunofluorescence](#)
- [Immunoprecipitation](#)
- [Flow Cytometry](#)
- [Cell Culture](#)