

**PLXNB1 Antibody (C-term)**  
**Purified Rabbit Polyclonal Antibody (Pab)**  
**Catalog # AP21403b**

**Specification**

**PLXNB1 Antibody (C-term) - Product Information**

Application	<b>WB,E</b>
Primary Accession	<a href="#">O43157</a>
Reactivity	<b>Human</b>
Host	<b>Rabbit</b>
Clonality	<b>polyclonal</b>
Isotype	<b>Rabbit Ig</b>
Calculated MW	<b>232298</b>

**PLXNB1 Antibody (C-term) - Additional Information**

**Gene ID** 5364

**Other Names**

Plexin-B1, Semaphorin receptor SEP, PLXNB1, KIAA0407, PLXN5, SEP

**Target/Specificity**

This PLXNB1 antibody is generated from a rabbit immunized with a KLH conjugated synthetic peptide between 1715-1749 amino acids from the C-terminal region of human PLXNB1.

**Dilution**

WB~~1:2000

**Format**

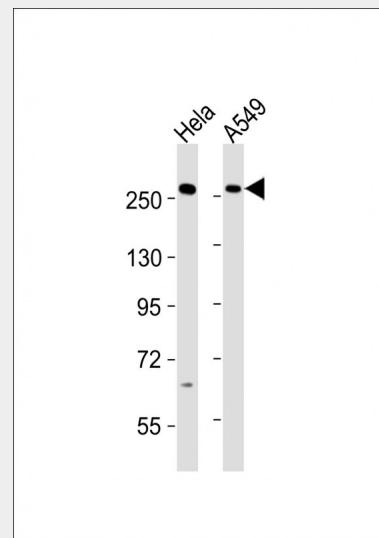
Purified polyclonal antibody supplied in PBS with 0.09% (W/V) sodium azide. This antibody is purified through a protein A column, followed by peptide affinity purification.

**Storage**

Maintain refrigerated at 2-8°C for up to 2 weeks. For long term storage store at -20°C in small aliquots to prevent freeze-thaw cycles.

**Precautions**

PLXNB1 Antibody (C-term) is for research use only and not for use in diagnostic or therapeutic procedures.



All lanes : Anti-PLXNB1 Antibody (C-term) at 1:2000 dilution Lane 1: HeLa whole cell lysates Lane 2: A549 whole cell lysates Lysates/proteins at 20 µg per lane. Secondary Goat Anti-Rabbit IgG, (H+L), Peroxidase conjugated at 1/10000 dilution Predicted band size : 232 kDa Blocking/Dilution buffer: 5% NFDM/TBST.

**PLXNB1 Antibody (C-term) - Background**

Receptor for SEMA4D. Plays a role in RHOA activation and subsequent changes of the actin cytoskeleton. Plays a role in axon guidance, invasive growth and cell migration.

**PLXNB1 Antibody (C-term) - References**

- Ishikawa K.,et al.DNA Res. 4:307-313(1997).
- Tamagnone L.,et al.Cell 99:71-80(1999).
- Tamagnone L.,et al.Cell 104:321-321(2001).
- Maestrini E.,et al.Proc. Natl. Acad. Sci. U.S.A. 93:674-678(1996).
- Mural R.J.,et al.Submitted (JUL-2005) to the EMBL/GenBank/DDBJ databases.

## PLXNB1 Antibody (C-term) - Protein Information

**Name** PLXNB1

**Synonyms** KIAA0407, PLXN5, SEP

### Function

Receptor for SEMA4D (PubMed: [19843518](http://www.uniprot.org/citations/19843518)), PubMed: [20877282](http://www.uniprot.org/citations/20877282), PubMed: [21912513](http://www.uniprot.org/citations/21912513) target="\_blank">21912513</a>). Plays a role in GABAergic synapse development (By similarity). Mediates SEMA4A- and SEMA4D-dependent inhibitory synapse development (By similarity). Plays a role in RHOA activation and subsequent changes of the actin cytoskeleton (PubMed: [12196628](http://www.uniprot.org/citations/12196628)), PubMed: [15210733](http://www.uniprot.org/citations/15210733) target="\_blank">15210733</a>). Plays a role in axon guidance, invasive growth and cell migration (PubMed: [12198496](http://www.uniprot.org/citations/12198496) target="\_blank">12198496</a>).

### Cellular Location

[Isoform 1]: Cell membrane; Single-pass type I membrane protein [Isoform 3]: Secreted

### Tissue Location

Highly expressed in fetal kidney, and at slightly lower levels in fetal brain, lung and liver

## PLXNB1 Antibody (C-term) - Protocols

Provided below are standard protocols that you may find useful for product applications.

- [Western Blot](#)
- [Blocking Peptides](#)
- [Dot Blot](#)
- [Immunohistochemistry](#)
- [Immunofluorescence](#)
- [Immunoprecipitation](#)

- [Flow Cytometry](#)
- [Cell Culture](#)