

P2ry4 Antibody (N-term)
Purified Rabbit Polyclonal Antibody (Pab)
Catalog # AP21371a

Specification

P2ry4 Antibody (N-term) - Product Information

Application	WB,E
Primary Accession	O9JJS7
Reactivity	Mouse, Rat
Host	Rabbit
Clonality	polyclonal
Isotype	Rabbit Ig

P2ry4 Antibody (N-term) - Additional Information

Gene ID 57385

Other Names

P2Y purinoceptor 4, P2Y4, P2ry4, P2y4r

Target/Specificity

This P2ry4 antibody is generated from a rabbit immunized with a KLH conjugated synthetic peptide between 5-42 amino acids from the N-terminal region of human P2ry4.

Dilution

WB~~1:2000

Format

Purified polyclonal antibody supplied in PBS with 0.09% (W/V) sodium azide. This antibody is purified through a protein A column, followed by peptide affinity purification.

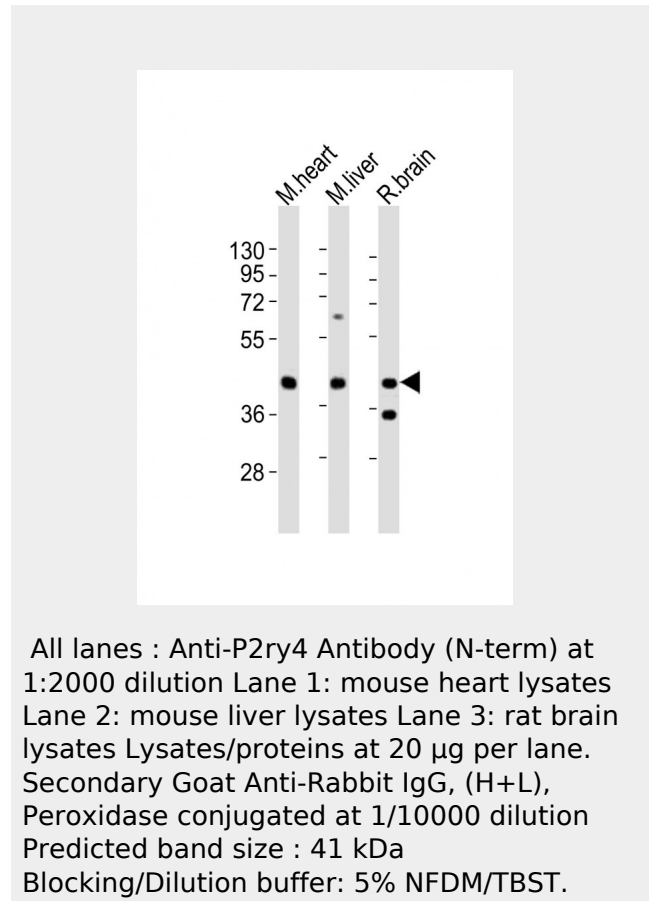
Storage

Maintain refrigerated at 2-8°C for up to 2 weeks. For long term storage store at -20°C in small aliquots to prevent freeze-thaw cycles.

Precautions

P2ry4 Antibody (N-term) is for research use only and not for use in diagnostic or therapeutic procedures.

P2ry4 Antibody (N-term) - Protein Information



P2ry4 Antibody (N-term) - Background

Receptor for ATP and UTP coupled to G-proteins that activate a phosphatidylinositol-calcium second messenger system.

P2ry4 Antibody (N-term) - References

Suarez-Huerta N., et al. Eur. J. Pharmacol. 416:197-202(2001).
Carninci P., et al. Science 309:1559-1563(2005).

Name P2ry4

Synonyms P2y4r

Function

Receptor for ATP and UTP coupled to G-proteins that activate a phosphatidylinositol-calcium second messenger system.

Cellular Location

Cell membrane; Multi-pass membrane protein.

Tissue Location

Expressed in the liver, intestine, stomach, bladder and lung

P2ry4 Antibody (N-term) - Protocols

Provided below are standard protocols that you may find useful for product applications.

- [Western Blot](#)
- [Blocking Peptides](#)
- [Dot Blot](#)
- [Immunohistochemistry](#)
- [Immunofluorescence](#)
- [Immunoprecipitation](#)
- [Flow Cytometry](#)
- [Cell Culture](#)