

BZRAP1 Antibody (C-term)
Purified Rabbit Polyclonal Antibody (Pab)
Catalog # AP21258b

Specification

BZRAP1 Antibody (C-term) - Product Information

Application	WB,E
Primary Accession	O95153
Reactivity	Human
Host	Rabbit
Clonality	polyclonal
Isotype	Rabbit Ig
Calculated MW	200051

BZRAP1 Antibody (C-term) - Additional Information

Gene ID 9256

Other Names

Peripheral-type benzodiazepine receptor-associated protein 1, PRAX-1, Peripheral benzodiazepine receptor-interacting protein, PBR-IP, RIMS-binding protein 1, RIM-BP1, BZRAP1, KIAA0612, RBP1, RIMBP1

Target/Specificity

This BZRAP1 antibody is generated from a rabbit immunized with a KLH conjugated synthetic peptide between 1551-1585 amino acids from the C-terminal region of human BZRAP1.

Dilution

WB~~1:2000

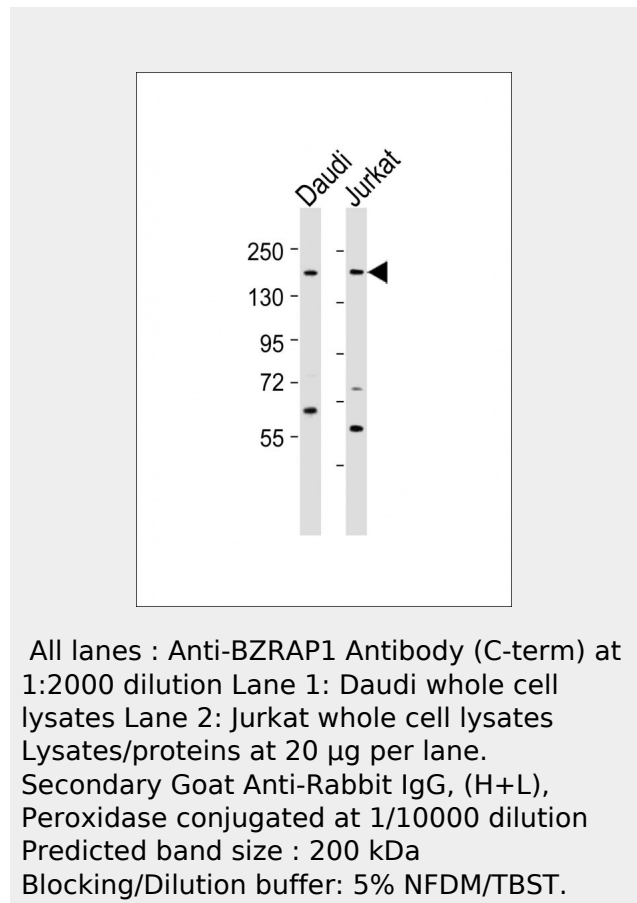
Format

Purified polyclonal antibody supplied in PBS with 0.09% (W/V) sodium azide. This antibody is purified through a protein A column, followed by peptide affinity purification.

Storage

Maintain refrigerated at 2-8°C for up to 2 weeks. For long term storage store at -20°C in small aliquots to prevent freeze-thaw cycles.

Precautions



BZRAP1 Antibody (C-term) - References

Galiegue S.,et al.J. Biol. Chem. 274:2938-2952(1999).
Ishikawa K.,et al.DNA Res. 5:169-176(1998).
Parry D.A.,et al.Am. J. Hum. Genet. 92:307-312(2013).

BZRAP1 Antibody (C-term) is for research use only and not for use in diagnostic or therapeutic procedures.

BZRAP1 Antibody (C-term) - Protein Information

Name TSPOAP1 ([HGNC:16831](#))

Cellular Location

Cytoplasm. Mitochondrion.

Note=Preferentially expressed in the mitochondria in the presence of TSPO

Tissue Location

Predominantly expressed in brain, pituitary gland and thymus in adults. In adult brain, highest expression found in temporal lobe and the putamen, followed by amygdala, caudate nucleus, cerebral cortex, occipital and frontal lobe. A high expression level is also observed in fetal tissues like brain, heart, kidney and thymus

BZRAP1 Antibody (C-term) - Protocols

Provided below are standard protocols that you may find useful for product applications.

- [Western Blot](#)
- [Blocking Peptides](#)
- [Dot Blot](#)
- [Immunohistochemistry](#)
- [Immunofluorescence](#)
- [Immunoprecipitation](#)
- [Flow Cytometry](#)
- [Cell Culture](#)