

(DANRE) sog3b Antibody (C-Term)
Purified Rabbit Polyclonal Antibody (Pab)
Catalog # AP21191b

Specification

(DANRE) sog3b Antibody (C-Term) - Product Information

Application	WB,E
Primary Accession	B3DIQ0
Reactivity	Zebrafish
Host	Rabbit
Clonality	polyclonal
Isotype	Rabbit Ig
Calculated MW	22157
Antigen Region	198-229

(DANRE) sog3b Antibody (C-Term) - Additional Information

Target/Specificity

This DANRE sog3b antibody is generated from a rabbit immunized with a KLH conjugated synthetic peptide between 198-229 amino acids from DANRE sog3b.

Dilution

WB~~1:2000

Format

Purified polyclonal antibody supplied in PBS with 0.09% (W/V) sodium azide. This antibody is purified through a protein A column, followed by peptide affinity purification.

Storage

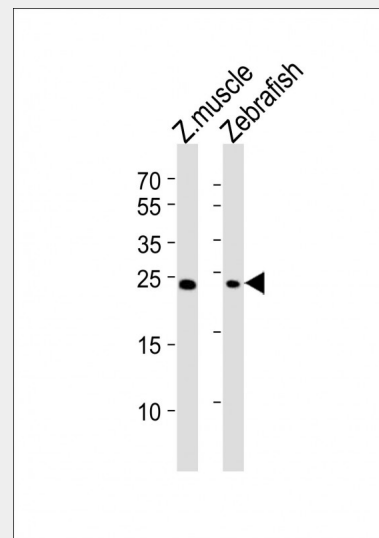
Maintain refrigerated at 2-8°C for up to 2 weeks. For long term storage store at -20°C in small aliquots to prevent freeze-thaw cycles.

Precautions

(DANRE) sog3b Antibody (C-Term) is for research use only and not for use in diagnostic or therapeutic procedures.

(DANRE) sog3b Antibody (C-Term) - Protein Information

Name sog3b



All lanes : Anti-soga3b Antibody (C-Term) at 1:2000 dilution Lane 1: Zebrafish muscle lysates Lane 2: Zebrafish lysates Lysates/proteins at 20 µg per lane. Secondary Goat Anti-Rabbit IgG, (H+L), Peroxidase conjugated at 1/10000 dilution Predicted band size : 22 kDa Blocking/Dilution buffer: 5% NFDM/TBST.

{ECO:0000313|ZFIN:ZDB-GENE-081022-198
}

(DANRE) sog3b Antibody (C-Term) - Protocols

Provided below are standard protocols that you may find useful for product applications.

- [Western Blot](#)
- [Blocking Peptides](#)
- [Dot Blot](#)
- [Immunohistochemistry](#)
- [Immunofluorescence](#)
- [Immunoprecipitation](#)
- [Flow Cytometry](#)
- [Cell Culture](#)