

(DANRE) atg5 Antibody (Center)
Purified Rabbit Polyclonal Antibody (Pab)
Catalog # AP21165a

Specification

(DANRE) atg5 Antibody (Center) - Product Information

Application	WB,E
Primary Accession	Q6DEM4
Reactivity	Human
Host	Rabbit
Clonality	polyclonal
Isotype	Rabbit Ig
Calculated MW	31872

(DANRE) atg5 Antibody (Center) - Additional Information

Target/Specificity

This (DANRE) atg5 antibody is generated from a rabbit immunized with a KLH conjugated synthetic peptide between 128-160 amino acids from the Central region of DANRE atg5.

Dilution

WB~~1:1000

Format

Purified polyclonal antibody supplied in PBS with 0.09% (W/V) sodium azide. This antibody is purified through a protein A column, followed by peptide affinity purification.

Storage

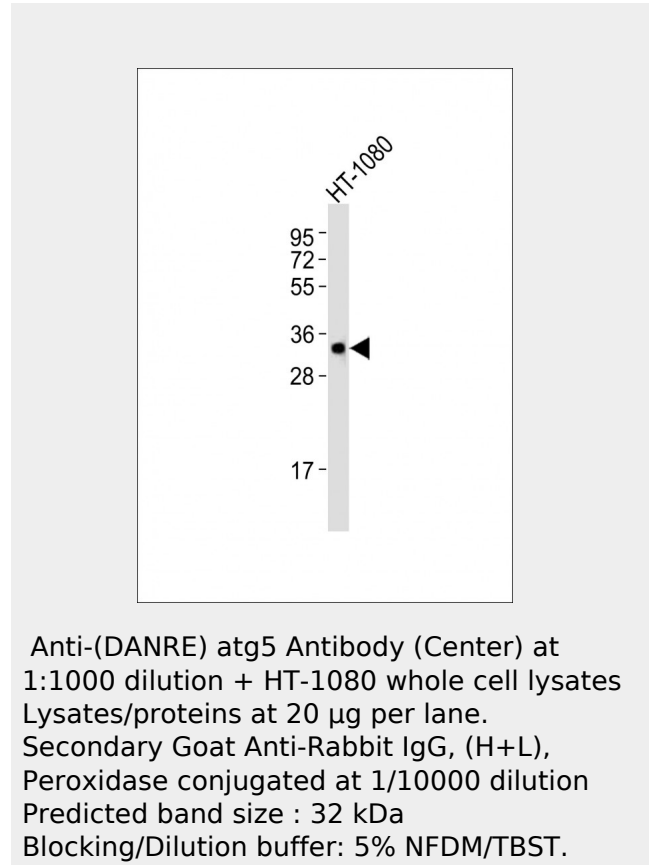
Maintain refrigerated at 2-8°C for up to 2 weeks. For long term storage store at -20°C in small aliquots to prevent freeze-thaw cycles.

Precautions

(DANRE) atg5 Antibody (Center) is for research use only and not for use in diagnostic or therapeutic procedures.

(DANRE) atg5 Antibody (Center) - Protein Information

Name Q6DEM4



Function

Involved in autophagic vesicle formation.

Cellular Location

Preautophagosomal structure membrane

{ECO:0000256|RuleBase:RU361202};

Peripheral membrane protein

{ECO:0000256|RuleBase:RU361202}

**(DANRE) atg5 Antibody (Center) -
Protocols**

Provided below are standard protocols that you may find useful for product applications.

- [Western Blot](#)
- [Blocking Peptides](#)
- [Dot Blot](#)
- [Immunohistochemistry](#)
- [Immunofluorescence](#)
- [Immunoprecipitation](#)
- [Flow Cytometry](#)
- [Cell Culture](#)