

**B4GALT7 Antibody (C-term)**  
**Purified Rabbit Polyclonal Antibody (Pab)**  
Catalog # AP21133a

**Specification**

**B4GALT7 Antibody (C-term) - Product Information**

Application	<b>WB,E</b>
Primary Accession	<a href="#">Q9UBV7</a>
Other Accession	<a href="#">Q8R087</a>
Reactivity	<b>Human, Mouse</b>
Host	<b>Rabbit</b>
Clonality	<b>polyclonal</b>
Isotype	<b>Rabbit Ig</b>
Calculated MW	<b>37406</b>

**B4GALT7 Antibody (C-term) - Additional Information**

**Gene ID** 11285

**Other Names**

Beta-1, 4-galactosyltransferase 7, Beta-1, 4-GalTase 7, Beta4Gal-T7, b4Gal-T7, 241-, UDP-Gal:beta-GlcNAc beta-1, 4-galactosyltransferase 7, UDP-galactose:beta-N-acetylglucosamine beta-1, 4-galactosyltransferase 7, Xylosylprotein 4-beta-galactosyltransferase, Proteoglycan UDP-galactose:beta-xylose beta1, 4-galactosyltransferase I, UDP-galactose:beta-xylose beta-1, 4-galactosyltransferase, XGPT, XGalT-1, Xylosylprotein beta-1, 4-galactosyltransferase, B4GALT7, XGALT1

**Target/Specificity**

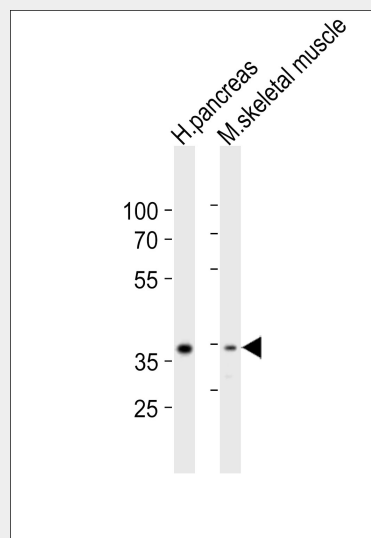
This B4GALT7 antibody is generated from a rabbit immunized with a KLH conjugated synthetic peptide between 256-290 amino acids from the C-terminal region of human B4GALT7.

**Dilution**

WB~~1:2000

**Format**

Purified polyclonal antibody supplied in PBS with 0.09% (W/V) sodium azide. This antibody is purified through a protein A column, followed by peptide affinity purification.



Western blot analysis of lysates from human pancreas, mouse skeletal muscle tissue lysate (from left to right), using B4GALT7 Antibody (C-term)(Cat. #AP21133a). AP21133a was diluted at 1:2000 at each lane. A goat anti-rabbit IgG H&L(HRP) at 1:10000 dilution was used as the secondary antibody. Lysates at 20ug per lane.

**B4GALT7 Antibody (C-term) - Background**

Required for the biosynthesis of the tetrasaccharide linkage region of proteoglycans, especially for small proteoglycans in skin fibroblasts.

**B4GALT7 Antibody (C-term) - References**

- Almeida R.,et al.J. Biol. Chem. 274:26165-26171(1999).
- Okajima T.,et al.J. Biol. Chem. 274:22915-22918(1999).
- Lo N.-W.,et al.Submitted (APR-1999) to the EMBL/GenBank/DDBJ databases.
- Clark H.F.,et al.Genome Res. 13:2265-2270(2003).
- Ota T.,et al.Nat. Genet. 36:40-45(2004).

**Storage**

Maintain refrigerated at 2-8°C for up to 2 weeks. For long term storage store at -20°C in small aliquots to prevent freeze-thaw cycles.

**Precautions**

B4GALT7 Antibody (C-term) is for research use only and not for use in diagnostic or therapeutic procedures.

**B4GALT7 Antibody (C-term) - Protein Information**

**Name** B4GALT7

**Synonyms** XGALT1

**Function**

Required for the biosynthesis of the tetrasaccharide linkage region of proteoglycans, especially for small proteoglycans in skin fibroblasts.

**Cellular Location**

Golgi apparatus, Golgi stack membrane; Single-pass type II membrane protein.  
Note=Cis cisternae of Golgi stack

**Tissue Location**

High expression in heart, pancreas and liver, medium in placenta and kidney, low in brain, skeletal muscle and lung

**B4GALT7 Antibody (C-term) - Protocols**

Provided below are standard protocols that you may find useful for product applications.

- [Western Blot](#)
- [Blocking Peptides](#)
- [Dot Blot](#)
- [Immunohistochemistry](#)
- [Immunofluorescence](#)
- [Immunoprecipitation](#)
- [Flow Cytometry](#)
- [Cell Culture](#)