

UTF1 Antibody (Center)
Purified Rabbit Polyclonal Antibody (Pab)
Catalog # AP21043a

Specification

UTF1 Antibody (Center) - Product Information

Application	WB,E
Primary Accession	Q5T230
Reactivity	Human
Host	Rabbit
Clonality	Polyclonal
Isotype	Rabbit Ig
Calculated MW	36439

UTF1 Antibody (Center) - Additional Information

Gene ID 8433

Other Names

Undifferentiated embryonic cell transcription factor 1, UTF1 (http://www.genenames.org/cgi-bin/gene_symbol_report?hgnc_id=12634)
target="_blank">HGNC:12634)

Target/Specificity

This UTF1 antibody is generated from a rabbit immunized with a KLH conjugated synthetic peptide between 164-199 amino acids from the Central region of human UTF1.

Dilution

WB~~1:1000

Format

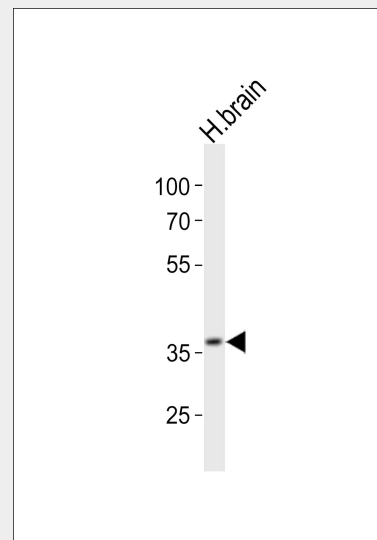
Purified polyclonal antibody supplied in PBS with 0.09% (W/V) sodium azide. This antibody is purified through a protein A column, followed by peptide affinity purification.

Storage

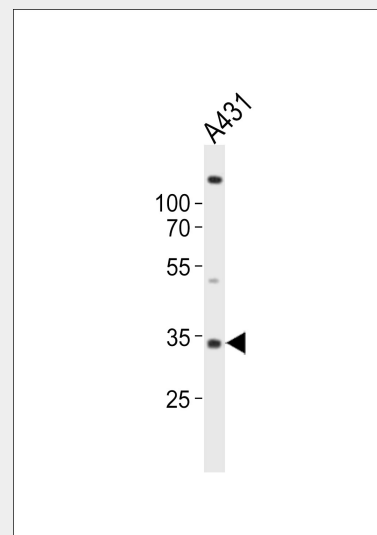
Maintain refrigerated at 2-8°C for up to 2 weeks. For long term storage store at -20°C in small aliquots to prevent freeze-thaw cycles.

Precautions

UTF1 Antibody (Center) is for research use only and not for use in diagnostic or



Western blot analysis of lysate from human brain tissue lysate , using UTF1 Antibody (Center)(Cat. #AP21043a). AP21043a was diluted at 1:1000. A goat anti-rabbit IgG H&L(HRP) at 1:10000 dilution was used as the secondary antibody. Lysate at 20ug.



Western blot analysis of lysate from A431 cell line, using UTF1 Antibody (Center)(Cat. #AP21043a). AP21043a was diluted at 1:1000. A goat anti-rabbit IgG H&L(HRP) at 1:10000 dilution was used as the secondary

therapeutic procedures.

antibody. Lysate at 20ug.

UTF1 Antibody (Center) - Protein Information

Name UTF1 ([HGNC:12634](#))

Function

Acts as a transcriptional coactivator of ATF2.

Cellular Location

Nucleus.

UTF1 Antibody (Center) - Protocols

Provided below are standard protocols that you may find useful for product applications.

- [Western Blot](#)
- [Blocking Peptides](#)
- [Dot Blot](#)
- [Immunohistochemistry](#)
- [Immunofluorescence](#)
- [Immunoprecipitation](#)
- [Flow Cytometry](#)
- [Cell Culture](#)

UTF1 Antibody (Center) - Background

Acts as a transcriptional coactivator of ATF2.

UTF1 Antibody (Center) - References

Fukushima A., et al. J. Biol. Chem. 273:25840-25849(1998).
Fukushima A., et al. Submitted (OCT-2008) to the EMBL/GenBank/DDBJ databases.
Xiang Y., et al. Submitted (APR-2004) to the EMBL/GenBank/DDBJ databases.
Deloukas P., et al. Nature 429:375-381(2004).
Rigbolt K.T., et al. Sci. Signal. 4:RS3-RS3(2011).