

CHRNB3 Antibody (Center)
Purified Rabbit Polyclonal Antibody (Pab)
Catalog # AP20832c

Specification

CHRNB3 Antibody (Center) - Product Information

Application	WB,E
Primary Accession	Q05901
Other Accession	P12391 , Q8BMN3
Reactivity	Hamster
Predicted	Mouse, Rat
Host	Rabbit
Clonality	Polyclonal
Isotype	Rabbit Ig
Calculated MW	52729

CHRNB3 Antibody (Center) - Additional Information

Gene ID 1142

Other Names

Neuronal acetylcholine receptor subunit beta-3, CHRNB3

Target/Specificity

This CHRNB3 antibody is generated from a rabbit immunized with a KLH conjugated synthetic peptide between 187-200 amino acids from the Central region of human CHRNB3.

Dilution

WB~~1:1000

Format

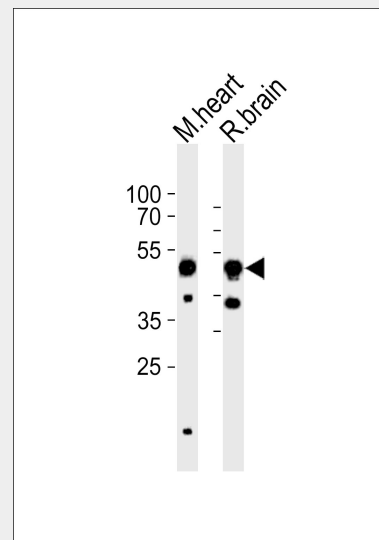
Purified polyclonal antibody supplied in PBS with 0.09% (W/V) sodium azide. This antibody is purified through a protein A column, followed by peptide affinity purification.

Storage

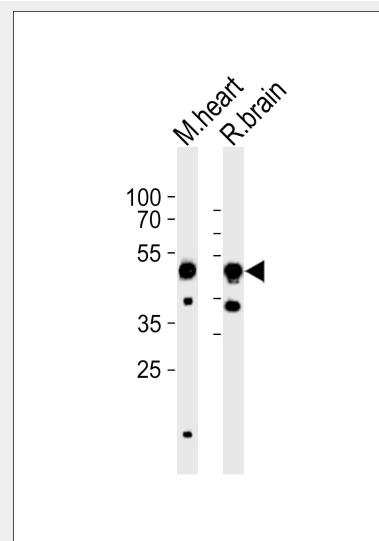
Maintain refrigerated at 2-8°C for up to 2 weeks. For long term storage store at -20°C in small aliquots to prevent freeze-thaw cycles.

Precautions

CHRNB3 Antibody (Center) is for research use only and not for use in diagnostic or



Western blot analysis of lysates from mouse heart, rat brain tissue (from left to right), using CHRNB3 Antibody (Center)(Cat. #AP20832c). AP20832c was diluted at 1:1000 at each lane. A goat anti-rabbit IgG H&L(HRP) at 1:10000 dilution was used as the secondary antibody. Lysates at 35ug per lane.



Western blot analysis of lysates from mouse heart, rat brain tissue lysate (from left to right), using CHRNB3 Antibody (Center)(Cat.

therapeutic procedures.

CHRNB3 Antibody (Center) - Protein Information

Name CHRNB3

Function

After binding acetylcholine, the AChR responds by an extensive change in conformation that affects all subunits and leads to opening of an ion-conducting channel across the plasma membrane.

Cellular Location

Cell junction, synapse, postsynaptic cell membrane; Multi-pass membrane protein. Cell membrane; Multi-pass membrane protein

CHRNB3 Antibody (Center) - Protocols

Provided below are standard protocols that you may find useful for product applications.

- [Western Blot](#)
- [Blocking Peptides](#)
- [Dot Blot](#)
- [Immunohistochemistry](#)
- [Immunofluorescence](#)
- [Immunoprecipitation](#)
- [Flow Cytometry](#)
- [Cell Culture](#)

#AP20832c). AP20832c was diluted at 1:1000 at each lane. A goat anti-rabbit IgG H&L(HRP) at 1:10000 dilution was used as the secondary antibody. Lysates at 35ug per lane.

CHRNB3 Antibody (Center) - Background

After binding acetylcholine, the AChR responds by an extensive change in conformation that affects all subunits and leads to opening of an ion-conducting channel across the plasma membrane.

CHRNB3 Antibody (Center) - References

Elliott K.J., et al. J. Mol. Neurosci. 7:217-228(1996).
Groot Kormelink P.J., et al. FEBS Lett. 400:309-314(1997).
Keddache M., et al. Submitted (APR-1999) to the EMBL/GenBank/DDBJ databases.
Willoughby J.J., et al. Neurosci. Lett. 155:136-139(1993).