

**CTSD(heavy chain) Antibody (Center)**  
**Purified Rabbit Polyclonal Antibody (Pab)**  
Catalog # AP20803c**Specification****CTSD(heavy chain) Antibody (Center) - Product Information**

|                   |   |
|-------------------|---|
| Application       | WB,E  |
| Primary Accession | <a href="#">P07339</a>                          |
| Other Accession   | <a href="#">P18242</a> , <a href="#">P80209</a> |
| Reactivity        | Human   |
| Predicted         | Bovine, Mouse                                   |
| Host              | Rabbit  |
| Clonality         | Polyclonal                                      |
| Isotype           | Rabbit Ig                                       |
| Calculated MW     | 44552   |

**CTSD(heavy chain) Antibody (Center) - Additional Information**

Gene ID 1509

**Other Names**Cathepsin D, Cathepsin D light chain,  
Cathepsin D heavy chain, CTSD, CPSD**Target/Specificity**

This CTSD(heavy chain) antibody is generated from a rabbit immunized with a KLH conjugated synthetic peptide between 241-273 amino acids from the Central region of human CTSD(heavy chain).

**Dilution**

WB~~1:1000

**Format**

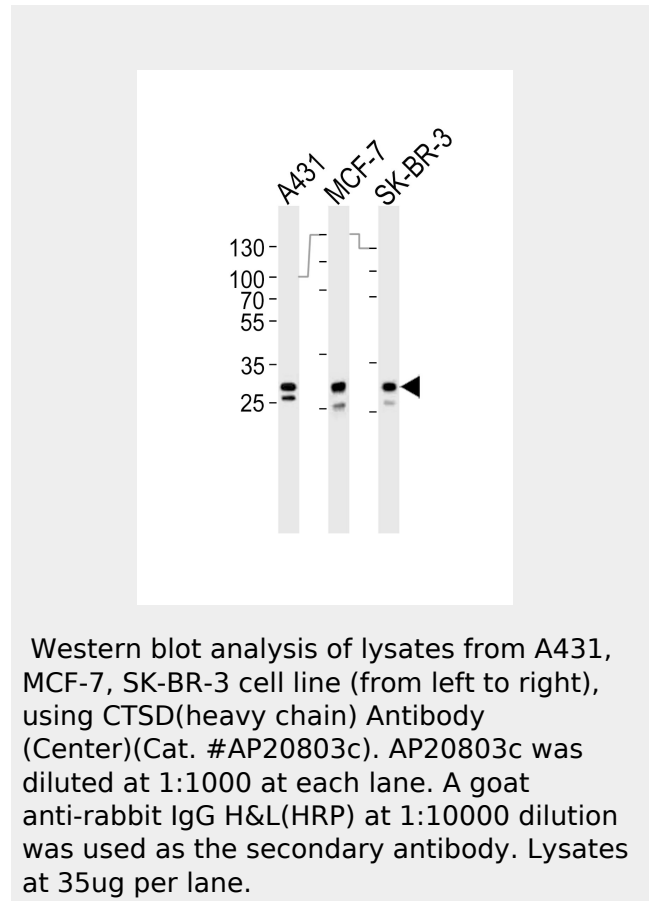
Purified polyclonal antibody supplied in PBS with 0.09% (W/V) sodium azide. This antibody is purified through a protein A column, followed by peptide affinity purification.

**Storage**

Maintain refrigerated at 2-8°C for up to 2 weeks. For long term storage store at -20°C in small aliquots to prevent freeze-thaw cycles.

**Precautions**

CTSD(heavy chain) Antibody (Center) is for

**CTSD(heavy chain) Antibody (Center) - Background**

Acid protease active in intracellular protein breakdown. Involved in the pathogenesis of several diseases such as breast cancer and possibly Alzheimer disease.

**CTSD(heavy chain) Antibody (Center) - References**Faust P.L.,et al.Proc. Natl. Acad. Sci. U.S.A. 82:4910-4914(1985).  
Westley B.R.,et al.Nucleic Acids Res. 15:3773-3786(1987).  
Redecker B.,et al.DNA Cell Biol. 10:423-431(1991).  
Ebert L.,et al.Submitted (JUN-2004) to the EMBL/GenBank/DDBJ databases.

research use only and not for use in diagnostic or therapeutic procedures.

Kalnine N., et al. Submitted (OCT-2004) to the EMBL/GenBank/DDBJ databases.

#### **CTSD(heavy chain) Antibody (Center) - Protein Information**

**Name** CTSD

**Synonyms** CPSD

#### **Function**

Acid protease active in intracellular protein breakdown. Plays a role in APP processing following cleavage and activation by ADAM30 which leads to APP degradation (PubMed:<a href="http://www.uniprot.org/citations/27333034" target="\_blank">27333034</a>). Involved in the pathogenesis of several diseases such as breast cancer and possibly Alzheimer disease.

#### **Cellular Location**

Lysosome. Melanosome. Secreted, extracellular space. Note=Identified by mass spectrometry in melanosome fractions from stage I to stage IV. In aortic samples, detected as an extracellular protein loosely bound to the matrix (PubMed:20551380)

#### **Tissue Location**

Expressed in the aorta extracellular space (at protein level) (PubMed:20551380).  
Expressed in liver (at protein level) (PubMed:1426530).

#### **CTSD(heavy chain) Antibody (Center) - Protocols**

Provided below are standard protocols that you may find useful for product applications.

- [Western Blot](#)
- [Blocking Peptides](#)
- [Dot Blot](#)
- [Immunohistochemistry](#)
- [Immunofluorescence](#)
- [Immunoprecipitation](#)
- [Flow Cytometry](#)
- [Cell Culture](#)