

MAD2L1 Antibody (C-term)
Purified Rabbit Polyclonal Antibody (Pab)
Catalog # AP20713c**Specification****MAD2L1 Antibody (C-term) - Product Information**

Application	WB,E
Primary Accession	Q13257
Other Accession	Q9Z1B5
Reactivity	Human
Predicted	Mouse
Host	Rabbit
Clonality	Polyclonal
Isotype	Rabbit Ig
Calculated MW	23510

MAD2L1 Antibody (C-term) - Additional Information**Gene ID** 4085**Other Names**

Mitotic spindle assembly checkpoint protein
MAD2A, HsMAD2, Mitotic arrest deficient
2-like protein 1, MAD2-like protein 1,
MAD2L1, MAD2

Target/Specificity

This MAD2L1 antibody is generated from a rabbit immunized with a KLH conjugated synthetic peptide between 159-192 amino acids from the C-terminal region of human MAD2L1.

Dilution

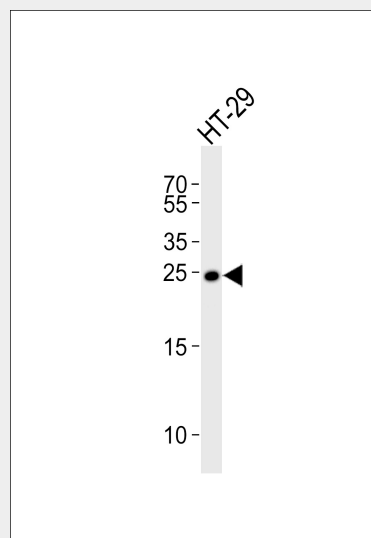
WB~~1:1000

Format

Purified polyclonal antibody supplied in PBS with 0.09% (W/V) sodium azide. This antibody is purified through a protein A column, followed by peptide affinity purification.

Storage

Maintain refrigerated at 2-8°C for up to 2 weeks. For long term storage store at -20°C in small aliquots to prevent freeze-thaw cycles.

Precautions

Western blot analysis of lysate from HT-29 cell line, using MAD2L1 Antibody (C-term)(Cat. #AP20713c). AP20713c was diluted at 1:1000. A goat anti-rabbit IgG H&L(HRP) at 1:5000 dilution was used as the secondary antibody. Lysate at 35ug.

MAD2L1 Antibody (C-term) - Background

Component of the spindle-assembly checkpoint that prevents the onset of anaphase until all chromosomes are properly aligned at the metaphase plate. Required for the execution of the mitotic checkpoint which monitors the process of kinetochore- spindle attachment and inhibits the activity of the anaphase promoting complex by sequestering CDC20 until all chromosomes are aligned at the metaphase plate.

MAD2L1 Antibody (C-term) - References

Li Y.,et al.Science 274:246-248(1996).
Gemma A.,et al.Lung Cancer 32:289-295(2001).
Jin D.-Y.,et al.Submitted (JUL-1995) to the EMBL/GenBank/DDBJ databases.
Klebert S.,et al.Submitted (OCT-1997) to the

MAD2L1 Antibody (C-term) is for research use only and not for use in diagnostic or therapeutic procedures.

EMBL/GenBank/DDBJ databases.
Nobori T., et al. Submitted (FEB-2001) to the EMBL/GenBank/DDBJ databases.

MAD2L1 Antibody (C-term) - Protein Information

Name MAD2L1

Synonyms MAD2

Function

Component of the spindle-assembly checkpoint that prevents the onset of anaphase until all chromosomes are properly aligned at the metaphase plate (PubMed: [29162720](http://www.uniprot.org/citations/29162720) target="_blank">29162720, PubMed: [15024386](http://www.uniprot.org/citations/15024386) target="_blank">15024386). In the closed conformation (C-MAD2) forms a heterotetrameric complex with MAD1L1 at unattached kinetochores during prometaphase, the complex recruits open conformation molecules of MAD2L1 (O-MAD2) and then promotes the conversion of O-MAD2 to C-MAD2 (PubMed: [29162720](http://www.uniprot.org/citations/29162720) target="_blank">29162720). Required for the execution of the mitotic checkpoint which monitors the process of kinetochore-spindle attachment and inhibits the activity of the anaphase promoting complex by sequestering CDC20 until all chromosomes are aligned at the metaphase plate (PubMed: [10700282](http://www.uniprot.org/citations/10700282) target="_blank">10700282, PubMed: [11804586](http://www.uniprot.org/citations/11804586) target="_blank">11804586, PubMed: [15024386](http://www.uniprot.org/citations/15024386) target="_blank">15024386).

Cellular Location

Nucleus. Chromosome, centromere, kinetochore. Cytoplasm. Cytoplasm, cytoskeleton, spindle pole Note=Recruited by MAD1L1 to unattached kinetochores (Probable) Recruited to the nuclear pore complex by TPR during interphase Recruited to kinetochores in late prometaphase after BUB1, CENPF, BUB1B

and CENPE. Kinetochore association requires the presence of NEK2 Kinetochore association is repressed by UBD. Sequestered to the cytoplasm upon interaction with isoform 3 of MAD1L1 (PubMed:19010891) {ECO:0000269|PubMed:19010891, ECO:0000305}

MAD2L1 Antibody (C-term) - Protocols

Provided below are standard protocols that you may find useful for product applications.

- [Western Blot](#)
- [Blocking Peptides](#)
- [Dot Blot](#)
- [Immunohistochemistry](#)
- [Immunofluorescence](#)
- [Immunoprecipitation](#)
- [Flow Cytometry](#)
- [Cell Culture](#)